



Samsung Galaxy SIII Mini Camera Failed Troubleshooting

Troubleshooting a Samsung Galaxy SIII Mini camera failed issue.

Written By: ZFix



INTRODUCTION

We will show you how to fix your phone if you have message "Camera failed".

There are 5 steps to solve this problem.

After each step, check that your camera works.

If not - go to the next step.

_____ **Video tutorial:** _____

[video: https://youtu.be/yIPCFMu_Tgs]

TOOLS:

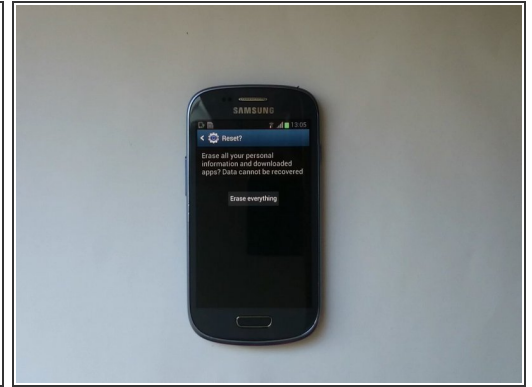
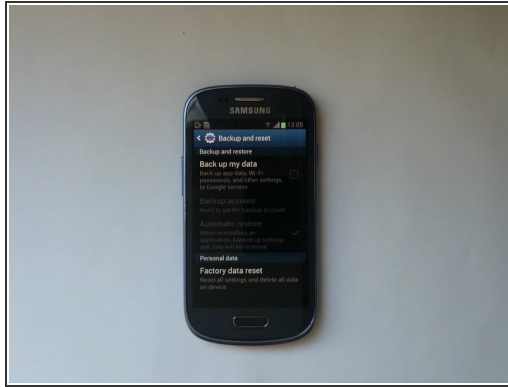
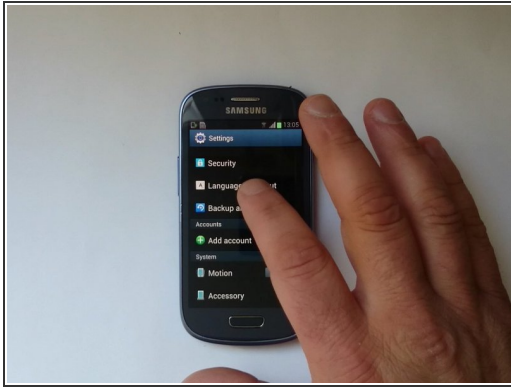
- [Phillips #0 Screwdriver](#) (1)
 - [Tweezers](#) (1)
 - [Spudger](#) (1)
 - [iFixit Opening Tools](#) (1)
-

Step 1 — Camera Data and Cache



- Go to:
 - > Settings
 - > Application manager
 - > All
 - >Camera
- Clear data and cache and check that the camera works. If no, go to the next step.

Step 2 — Factory / Hard Reset

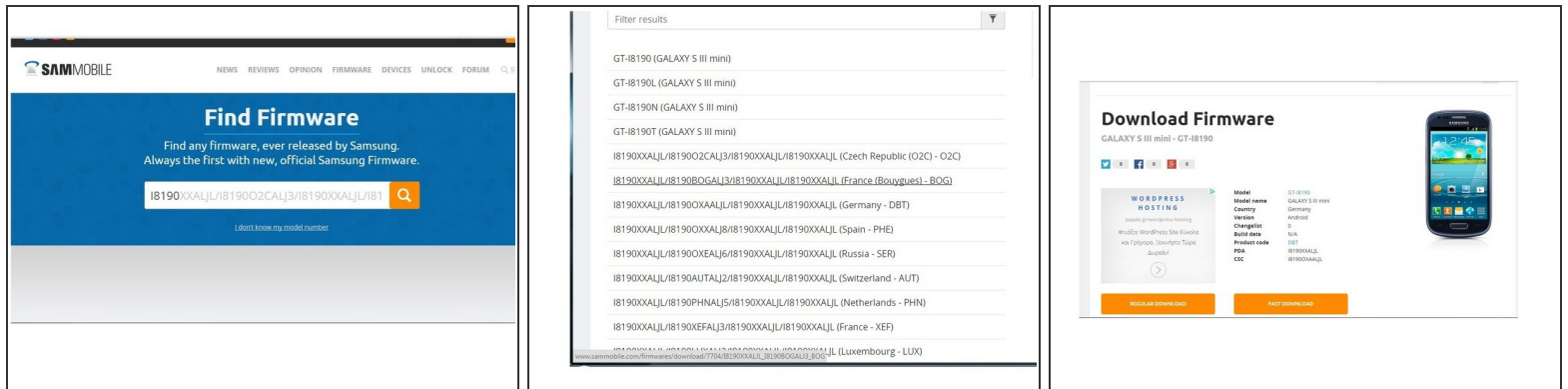


- Go to:
 - > Settings > Backup and reset
 - > Factory data reset
 - > Reset device > Erase everything

⚠ !!! This will erase all your data !!!

- For a Hard reset using hardware keys, follow this manual:
- [Samsung Galaxy - Wipe data/Factory reset](#)

Step 3 — Firmware



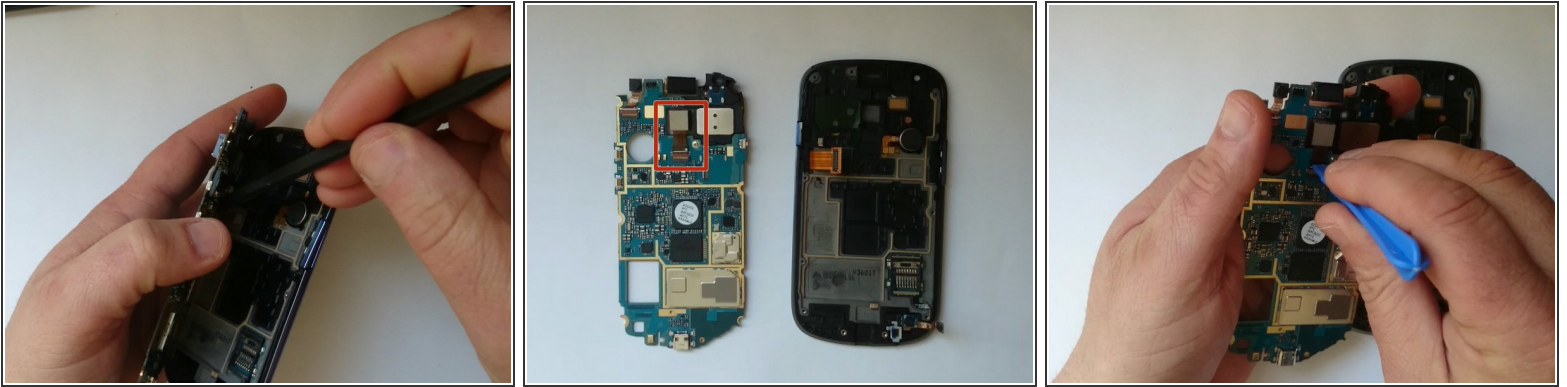
- Open [sammobile](http://sammobile.com) and make an registration.
- Search the firmware for your model and find the variant, corresponding to your mobile phone.
- ⓘ You can see the variant from Settings > About the device, or from dialer app by entering `*#1234#`
- In the download page you can find instructions and link to the Odin app.

Step 4 — Reconnecting Camera



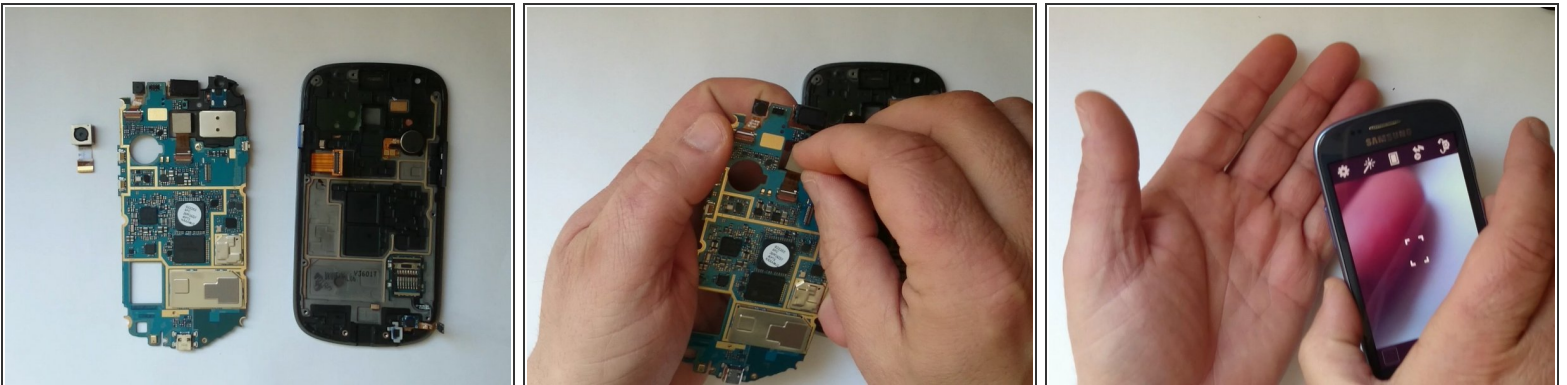
- Switch off the phone and remove the battery and any SIM and memory card.
- Remove the Midframe.
- Disconnect the Menu buttons and the SD card reader flex cables.
- Lift the board slightly to the left side and be careful with the earpiece and the main camera - they are stuck to the Display frame.

Step 5



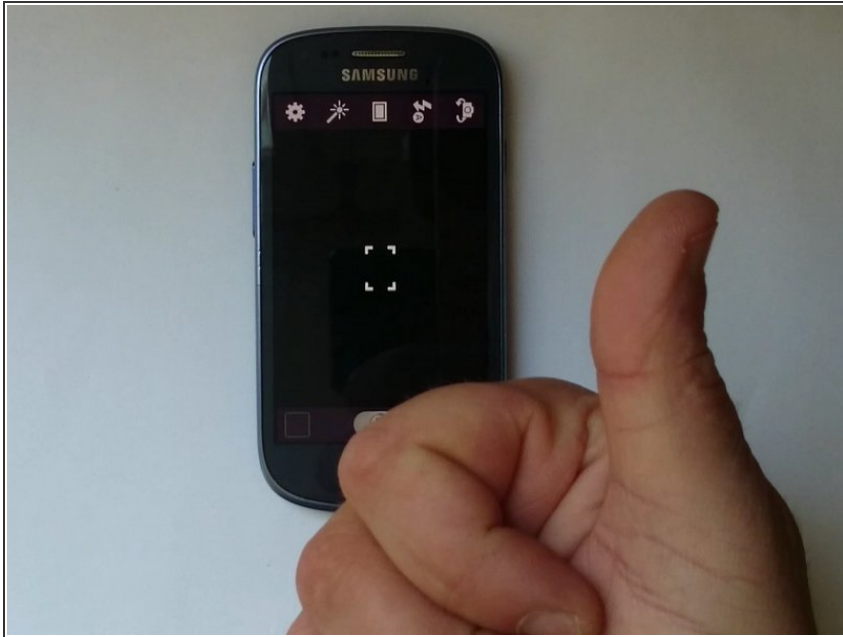
- Disconnect the LCD Display flex cable.
- Open the camera flex cable connector and reconnect the camera.

Step 6 — Camera Replacement



- If the camera still does not work, the last step is camera replacement.

Step 7



- **Did you do it successfully?**

To reassemble your device, follow these instructions in reverse order.