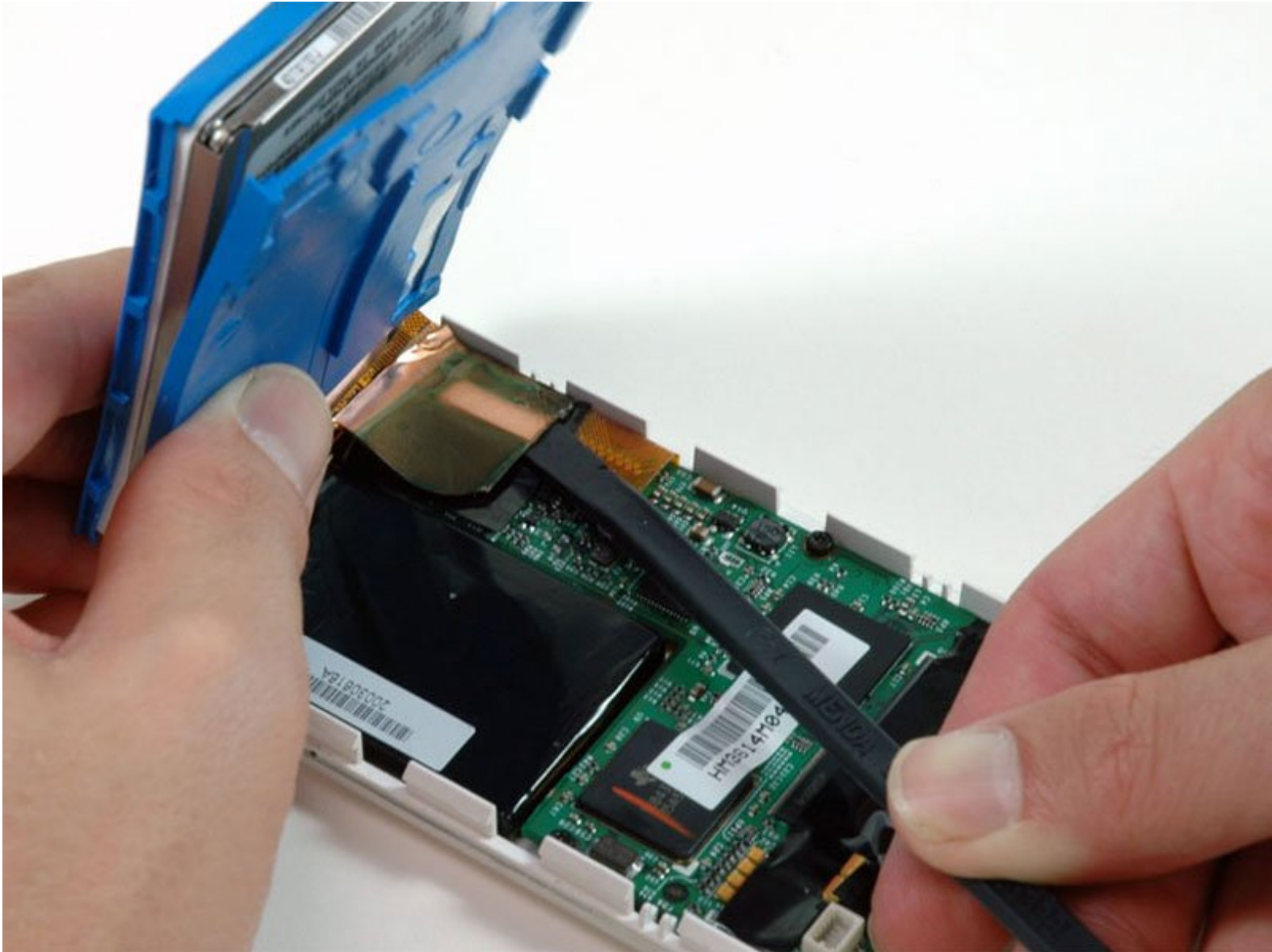




iPod 3rd Generation Battery Replacement

Written By: iRobot



INTRODUCTION

Battery not lasting long? Swap it out.



TOOLS:

- [iFixit Opening Tools](#) (1)
- [Spudger](#) (1)
- [T6 Torx Screwdriver](#) (1)



PARTS:

- [iPod 3G Replacement Battery](#) (1)
Part Only
- [iPod 3G Replacement Battery](#) (1)
Fix Kit
This contains the part and tools needed.

Step 1 — Case



- Before opening your iPod, ensure that the hold switch is in the locked position. The orange bar should be visible, indicating hold is active.

Step 2



- Insert an opening pick as far as possible into the seam between the plastic front and the metal rear panel, on the right edge of the iPod.
 - ⓘ You may need to rock the pick back and forth to slide it in farther.
- Use the opening pick to pry up against the plastic front panel and release five retaining tabs (seen in the third photo).
- Slide the pick along the edge of the iPod and continue prying to release the rest of the retaining tabs.
- After all five tabs along the right side are free, the case should open easily.

Step 3



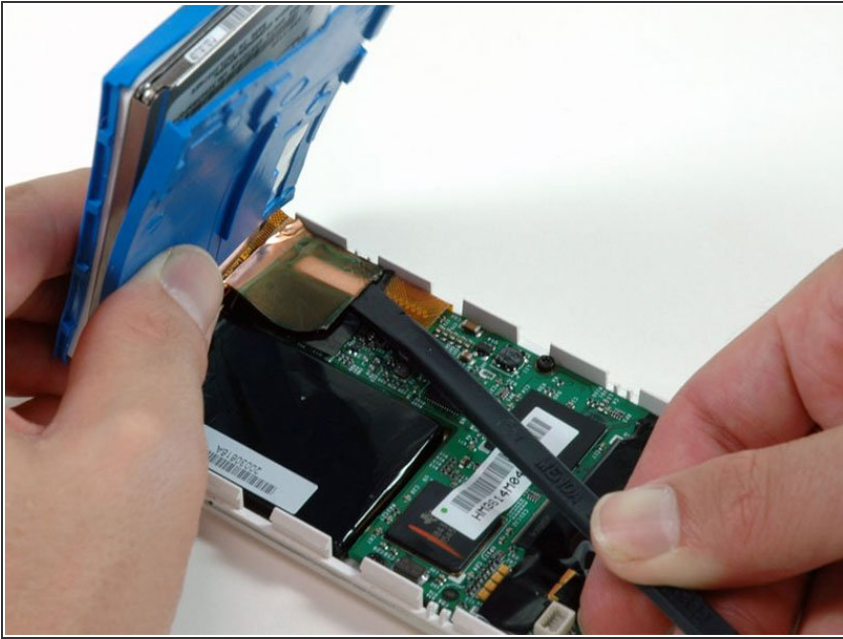
- ⓘ The iPod case is now open, but don't separate the two halves just yet. There is still an orange ribbon cable connecting the headphone jack to the logic board.
- Open the case like a book with the dock connector at the top, and lay the rear panel next to the front half of the iPod.

Step 4



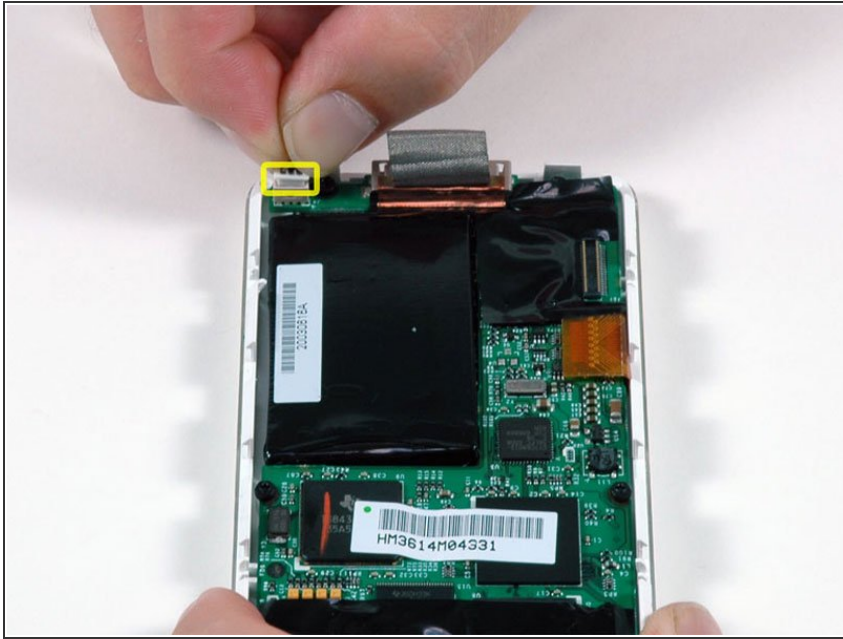
- Use a plastic tool or your fingernails to carefully disconnect the orange headphone jack cable. Be sure to pull straight up on the connector, not the cable itself.
- ⚠ The headphone jack connector is unusually tall. When prying, be careful to not separate the lower, plastic part of the connector from the ribbon cable. Pry between the connector and the socket, not between the two halves of the connector.

Step 5 — Battery



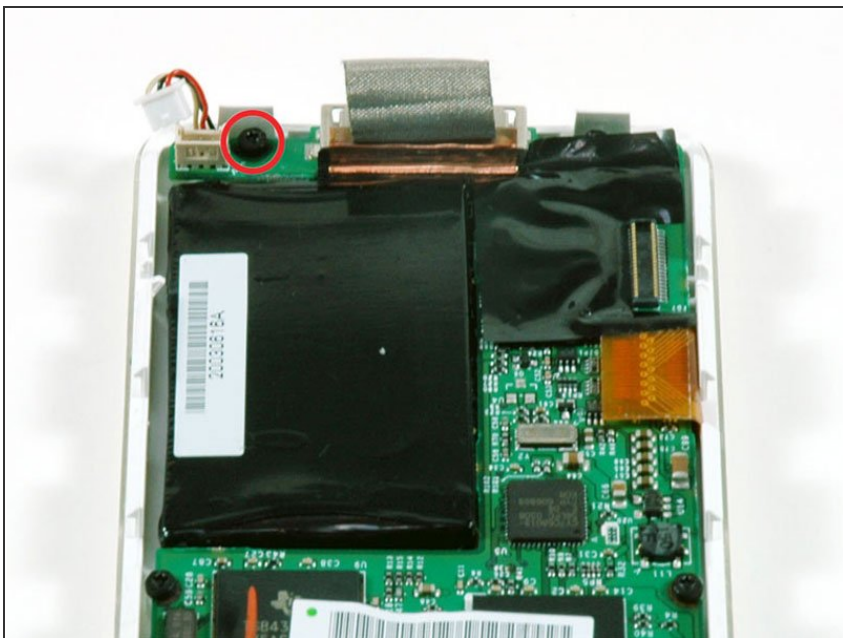
- Lift up the hard drive with one hand and carefully disconnect the hard drive ribbon from the logic board.
- Lift the hard drive out of the iPod.

Step 6



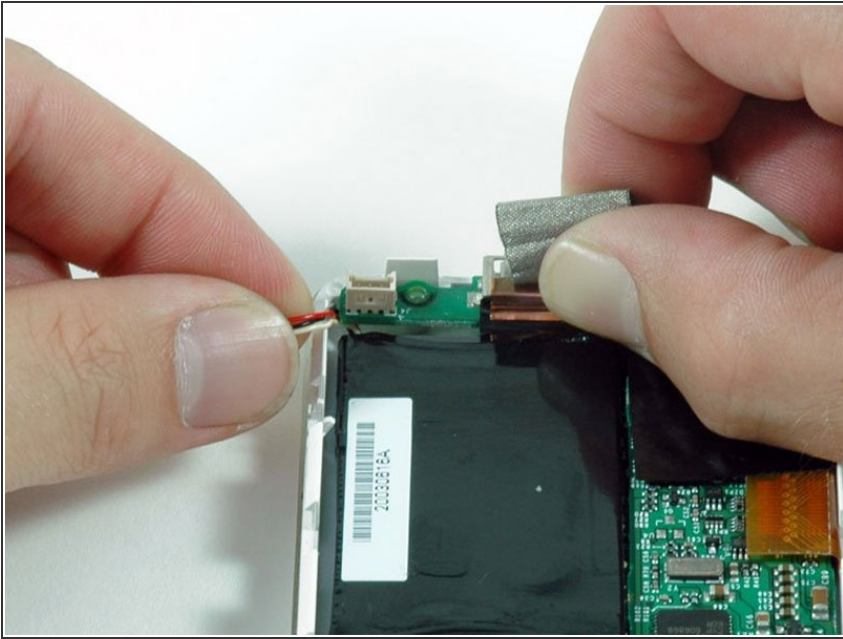
- Carefully disconnect the white battery connector from the logic board. Be sure to pull only on the connector itself and not on the cables.

Step 7



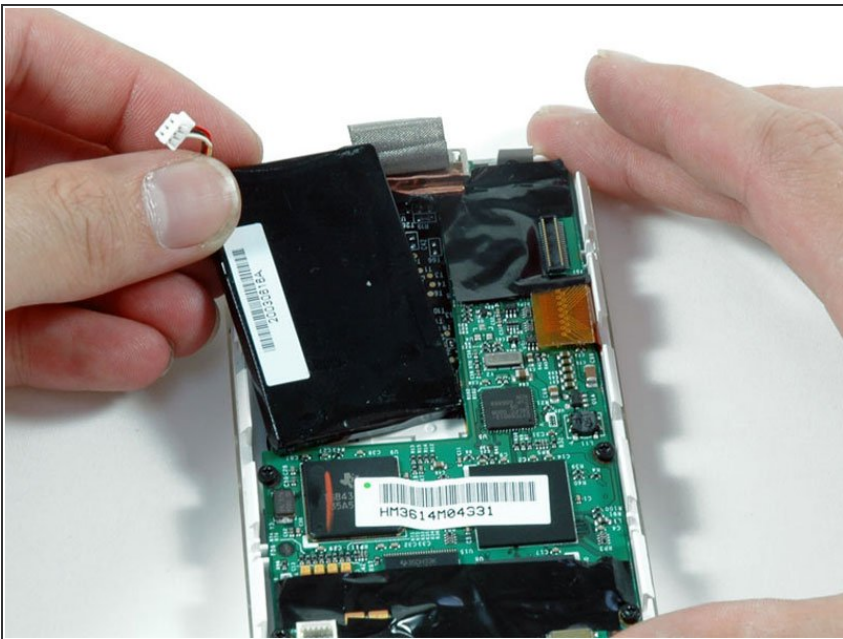
- ⓘ Removing the following screw isn't strictly necessary, but it will make the next step easier.
- Remove the black T6 Torx screw from near the battery connector on the logic board.

Step 8



- Carefully thread the battery cable around the end of the logic board. Be careful not to pull up on the logic board too much while freeing the battery cable.

Step 9



- Lift the battery up and out of the iPod.

To reassemble your device, follow these instructions in reverse order.