



Super Nintendo Super Nintendo Outer Case Replacement

This guide will show you how to remove the upper half of the Super Nintendo case.

Written By: Cameron Deines



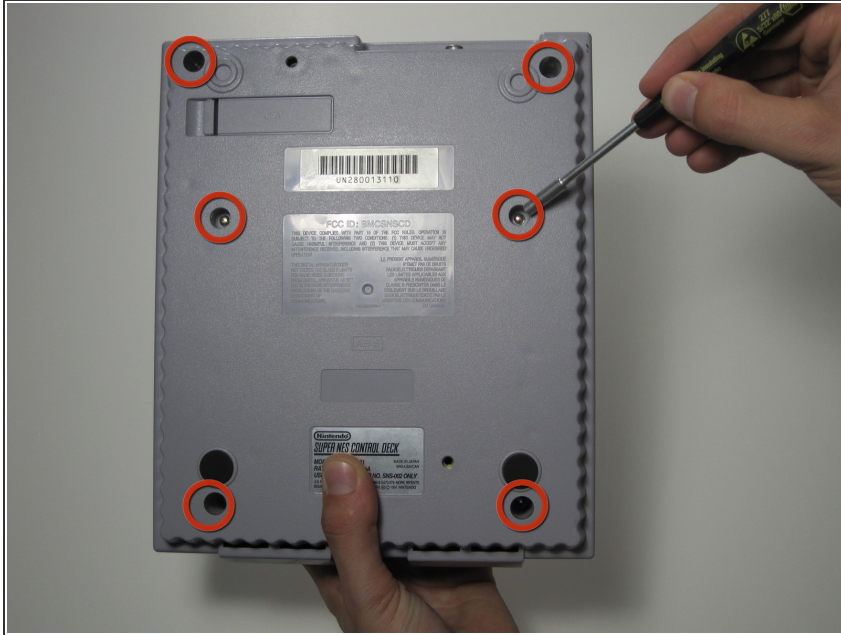
INTRODUCTION

This guide will show you how to open up your Super Nintendo.

TOOLS:

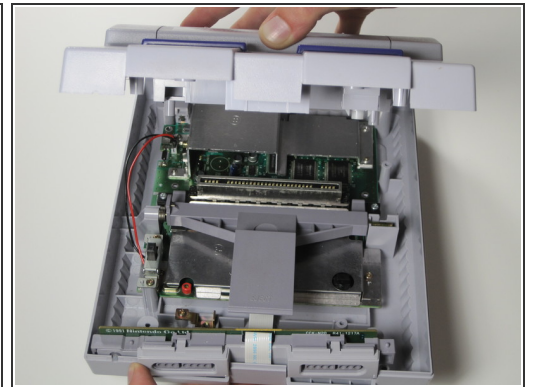
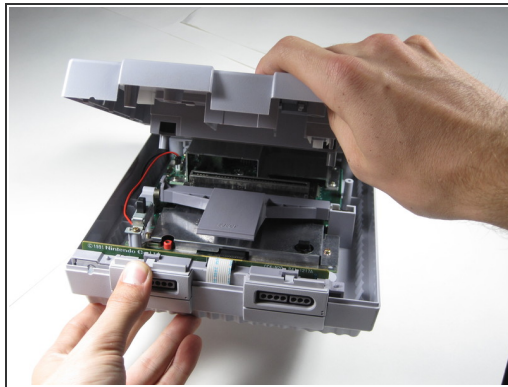
- [Gamebit 4.5mm](#) (1)
-

Step 1 — Outer Case



- Remove the six screws located on the underside of the system using the Gamebit 4.5mm screwdriver.

Step 2



- Carefully flip the unit back over.
- Locate the seam. Lift and separate the upper half of the case from the lower half of the case.

To reassemble your device, follow these instructions in reverse order.

This document was last generated on 2017-06-18 05:21:34 AM.