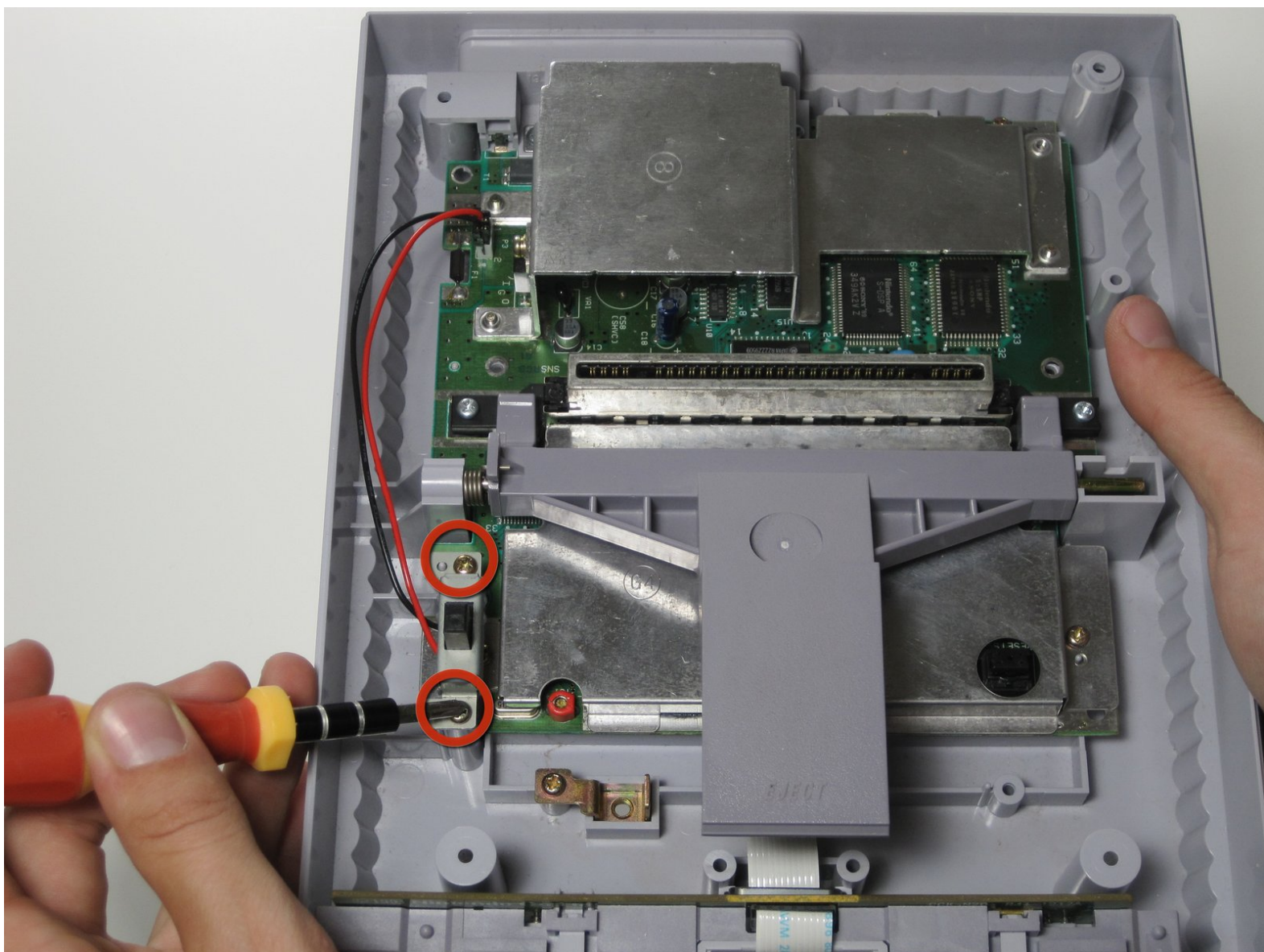




# Super Nintendo Power Switch Replacement

This guide shows how to remove the power switch connected to the motherboard.

Written By: Cameron Deines



## INTRODUCTION

This guide will show you how to remove the power switch connected to the motherboard. Steps can be followed in reverse to install a new power switch.

---

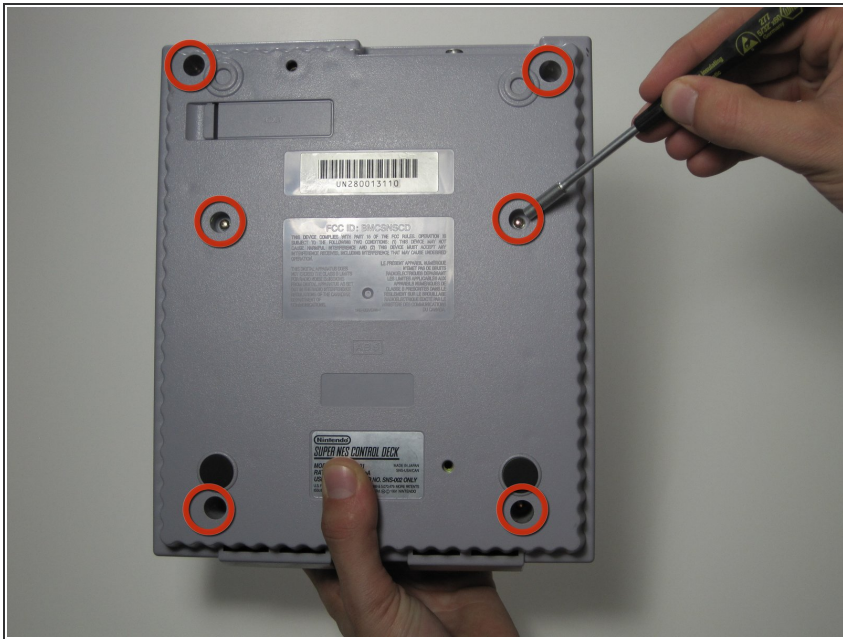
### TOOLS:

- [Gamebit 4.5mm](#) (1)
- [Phillips #2 Screwdriver](#) (1)

### PARTS:

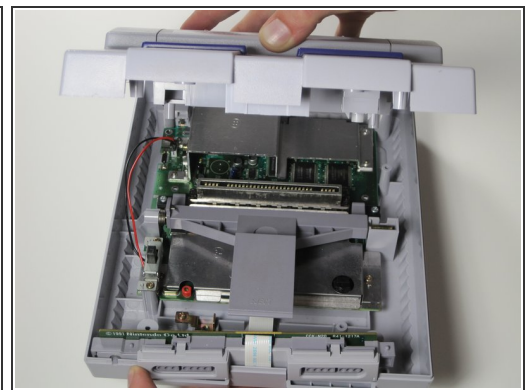
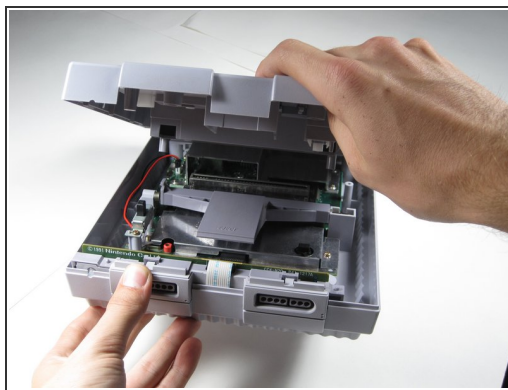
- [Super Nintendo Power switch](#) (1)

## Step 1 — Outer Case



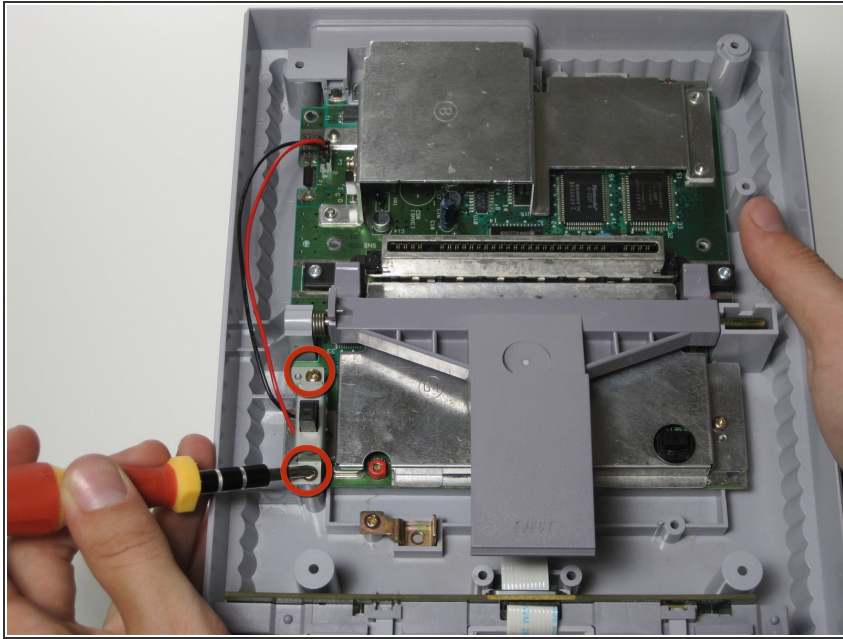
- Remove the six screws located on the underside of the system using the Gamebit 4.5mm screwdriver.

## Step 2



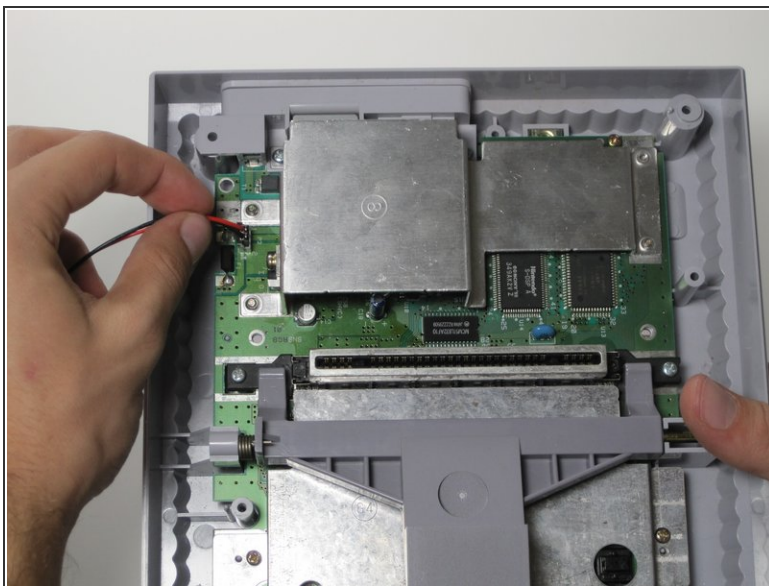
- Carefully flip the unit back over.
- Locate the seam. Lift and separate the upper half of the case from the lower half of the case.

### Step 3 — Power Switch



- Remove the two 11.7 mm Phillips #2 screws connecting the power switch to the motherboard.

### Step 4



- i** The power switch is connected to the motherboard near the top left of the console.
- Carefully pull the connector from its socket on the motherboard. You may need to wiggle it out as you pull.
- ⚠** Do not detach the connector by pulling on the wires. This could damage the wires or the socket.

To reassemble your device, follow these instructions in reverse order.