



# Sony Pulse Elite Edition Battery Replacement

A guide that walks through the process of removing the battery from a Sony Pulse Elite Edition.

Written By: Chris Echter



---

## INTRODUCTION

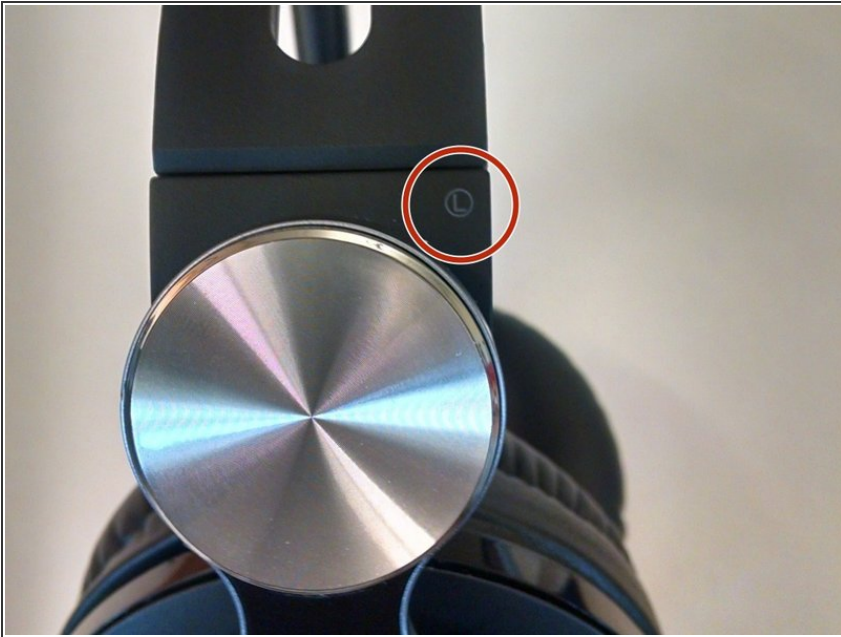
When working with electrical components, be sure to avoid loose wires.

---

### TOOLS:

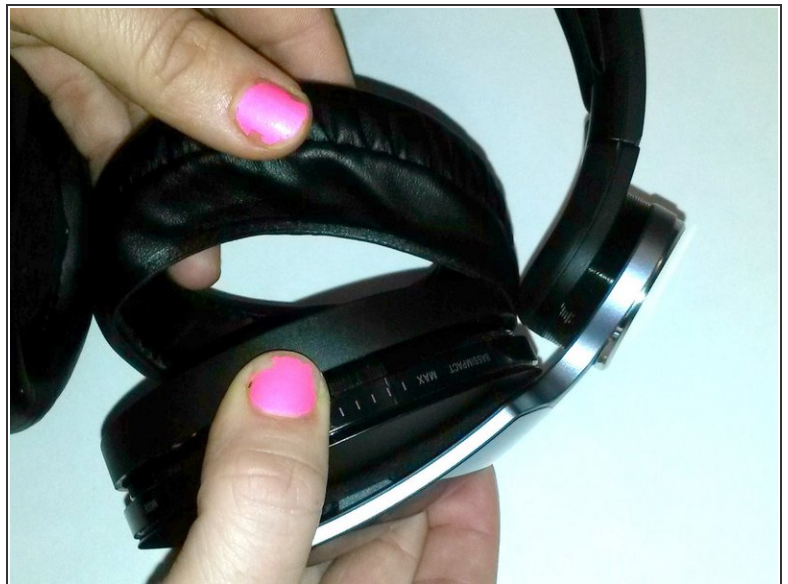
- [Phillips #00 Screwdriver](#) (1)
  - [Spudger](#) (1)
  - [Safety Glasses](#) (1)
-

## Step 1 — Identifying Earpiece



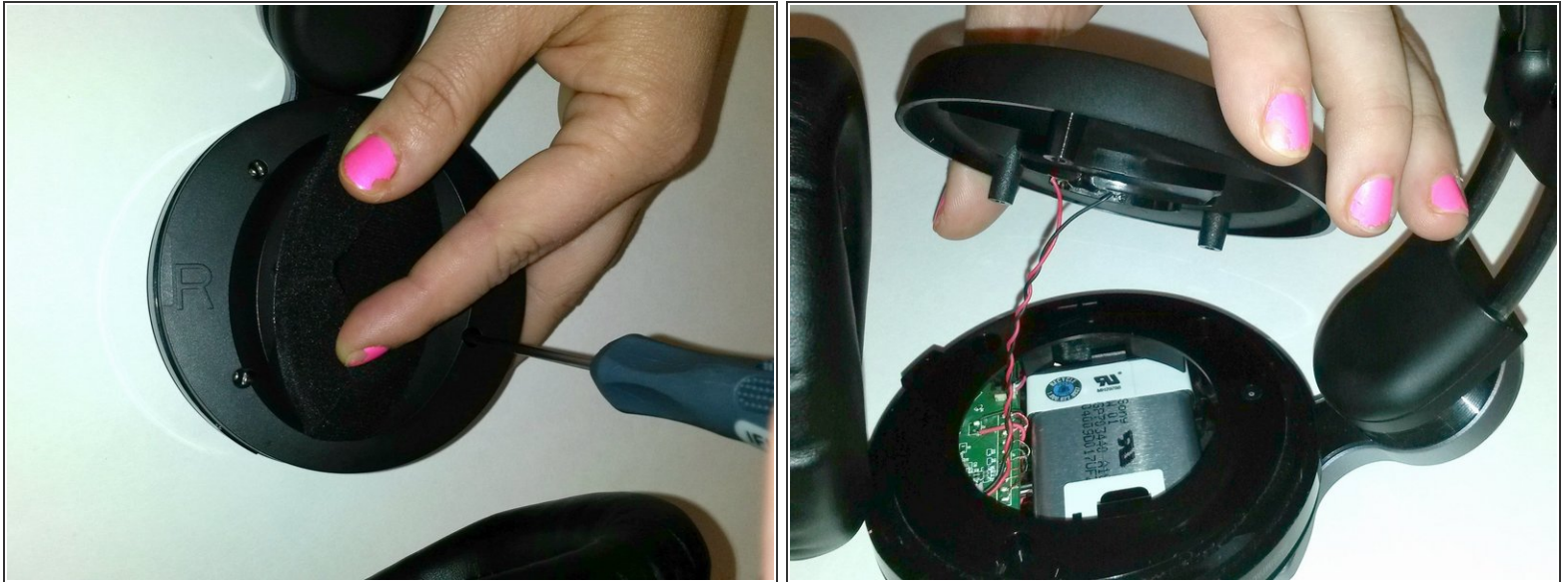
- Locate the side designation on the headband-earpiece junction.
- The battery is in the right earpiece.
- The motherboard is in the left earpiece.

## Step 2 — Ear Cushion Removal



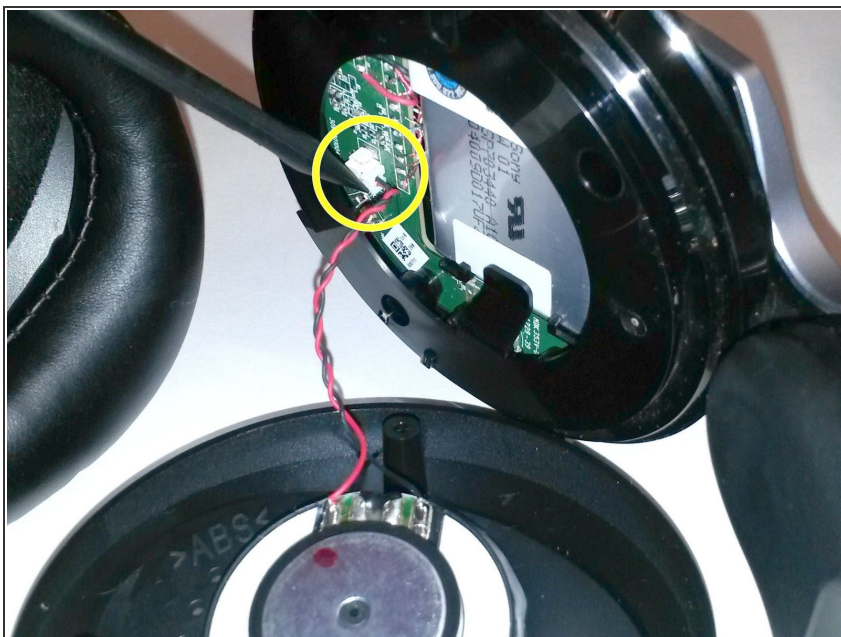
- Gently pull around the perimeter of the ear cushion until it comes off.

### Step 3 — Outer Ear Rim Removal



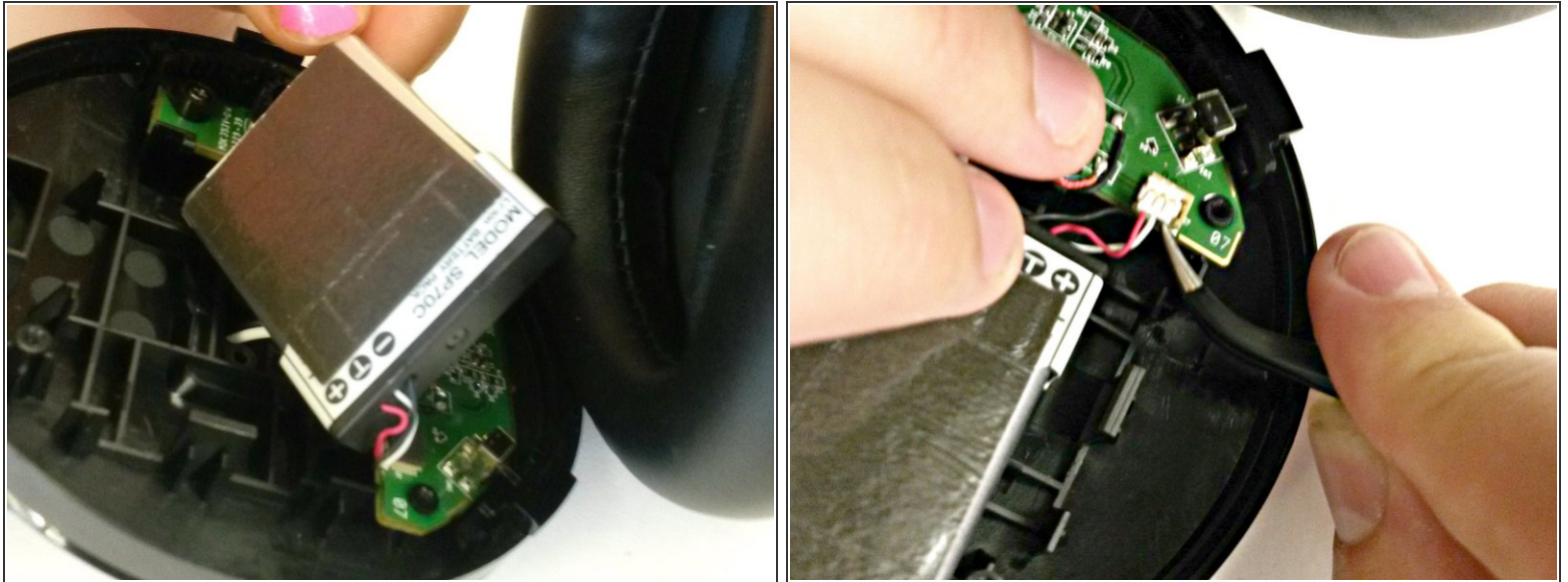
- Use the PH00 Screwdriver to remove the three Phillips 6mm screws around the perimeter of the ear cup.
  - Gently pull the outer ear rim off of the headset assembly.
- ⚠ Harsh removal may cause permanent damage to the speaker wires.

### Step 4 — Remove Speaker Housing



- Using tweezers, gently pry the red and black speaker wires from the attached socket.

## Step 5 — Remove Battery



- Lift up battery and disconnect wires using tweezers.
- Use a new battery for reconstruction.

To reassemble your device, follow these instructions in reverse order.