



HP Pavilion dv5000 Wifi Card

A step-by-step guide to accessing and removing the Wifi card for an HP Pavilion dv5000 laptop.

Written By: Sam Kaplan



INTRODUCTION


The HP Pavilion dv5000 Wifi Card allows for wireless network connectivity. It is located on the mother board, beneath the RAM memory/Wifi compartment cover.

TOOLS:

- [Phillips #0 Screwdriver](#) (1)
-

Step 1 — Battery



 Turn off the computer, and unplug it from all external power sources.

- Lay the computer face-down on a flat surface. Orient the computer to match the image.
- Locate the battery release switch, as indicated in the image by the red rectangle. Slide the switch from right to left, and remove the battery.

Step 2 — RAM Cover



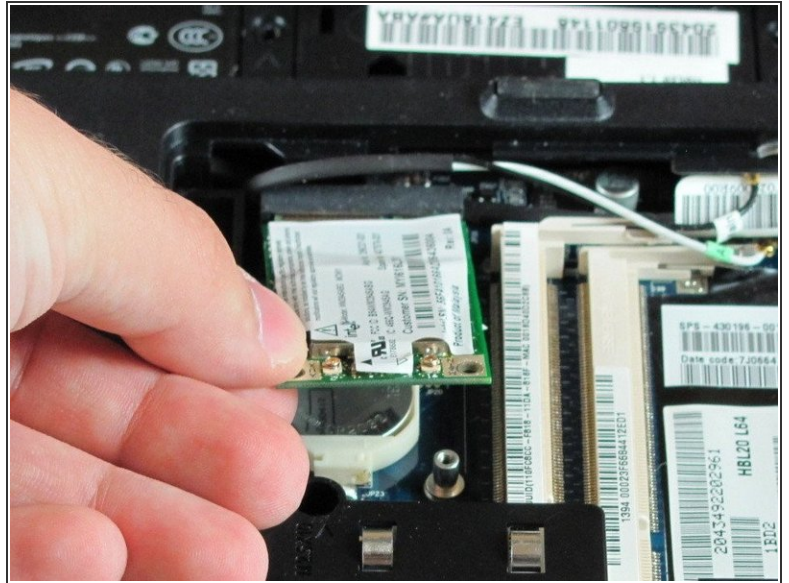
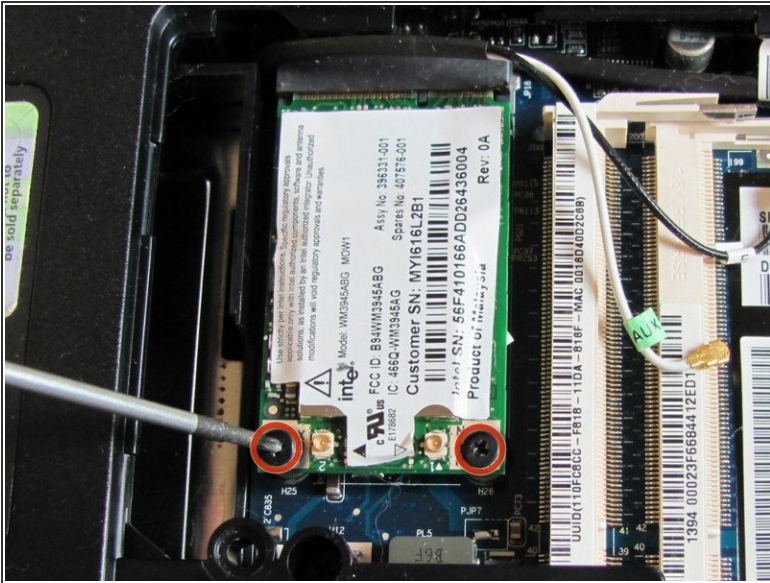
- Remove the two 5mm Phillips screws on the right side of the RAM cover.
- Lift the right side of the RAM cover, and remove it.

Step 3 — Wifi Card



- Disconnect the antenna leads from the wifi card by lifting the gold ends of the wires off the prongs on the wifi card.
 - The white wire connects to the AUX terminal.
 - The black wire connects to the MAIN terminal.

Step 4



- Remove the two 6.0mm Phillips screws from the wifi card.
- Remove the wifi card.

To reassemble your device, follow these instructions in reverse order.