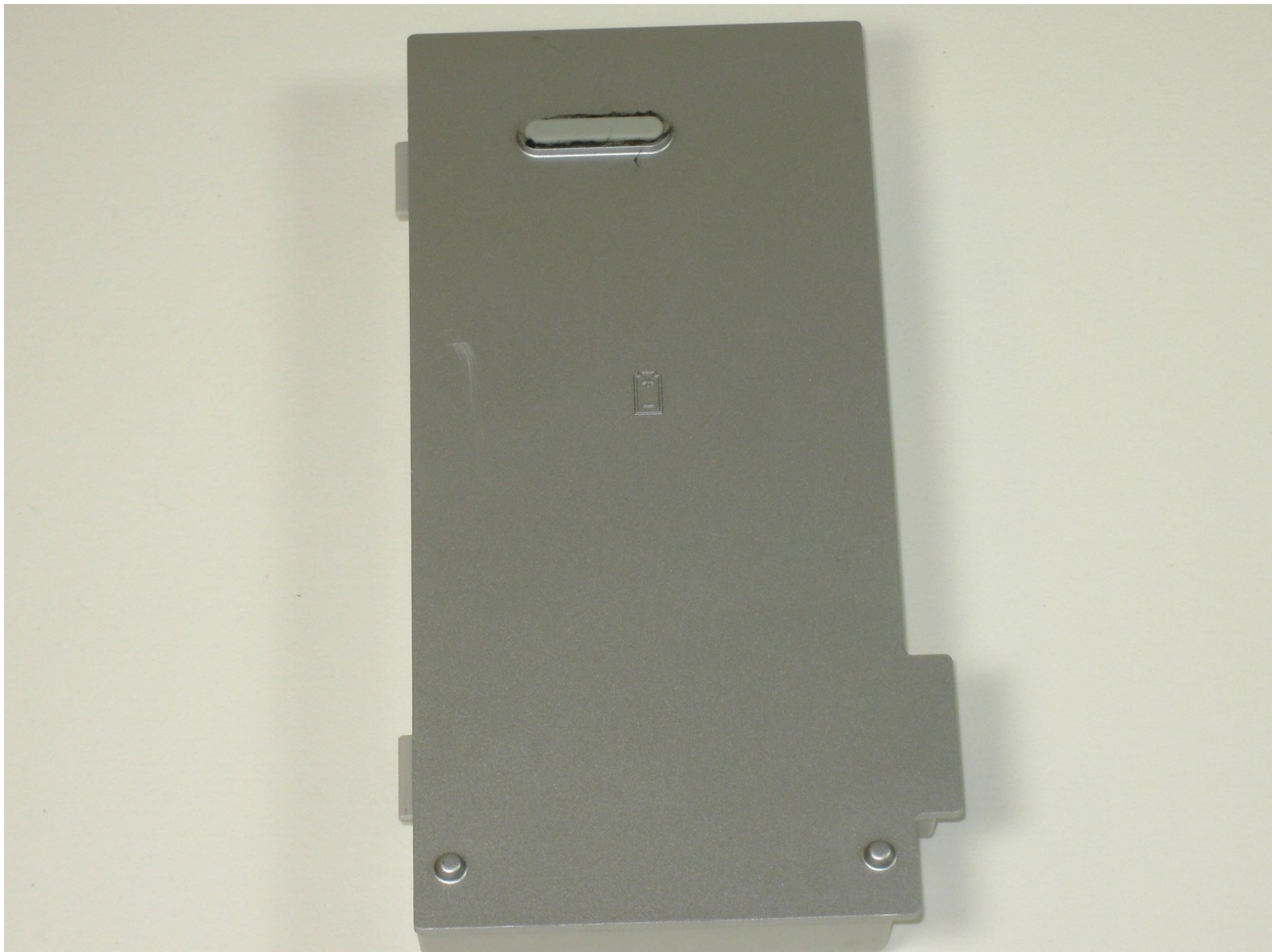




# Gateway 600YG2 Battery Replacement

Removal and installation of battery.

Written By: Aaron Brauner

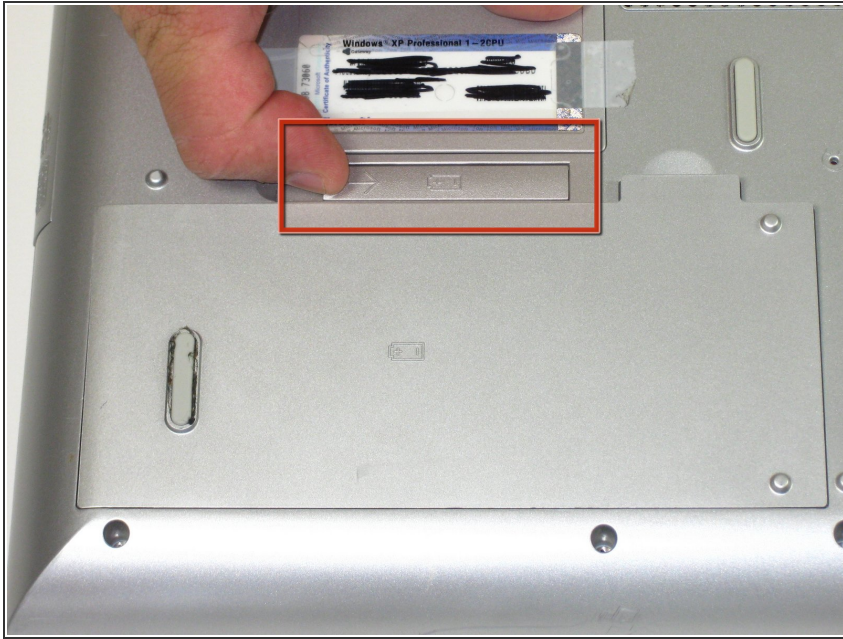


---

## INTRODUCTION

How to remove and install the battery.

## Step 1 — Battery



- Flip the laptop over. Slide the battery release tab to the right.

## Step 2



- Lift the battery out.

To reassemble your device, follow these instructions in reverse order.

This document was last generated on 2019-07-09 11:41:26 AM.