



Toshiba Satellite A75-S226 Optical Drive Replacement

This a very simple guide to replacing or remove the CD-ROM drive from your Toshiba Satellite A75-S226.

Written By: Garrett Gudgel



INTRODUCTION

This a very simple guide to replacing or remove the CD-ROM drive from your Toshiba Satellite A75-S226.

TOOLS:

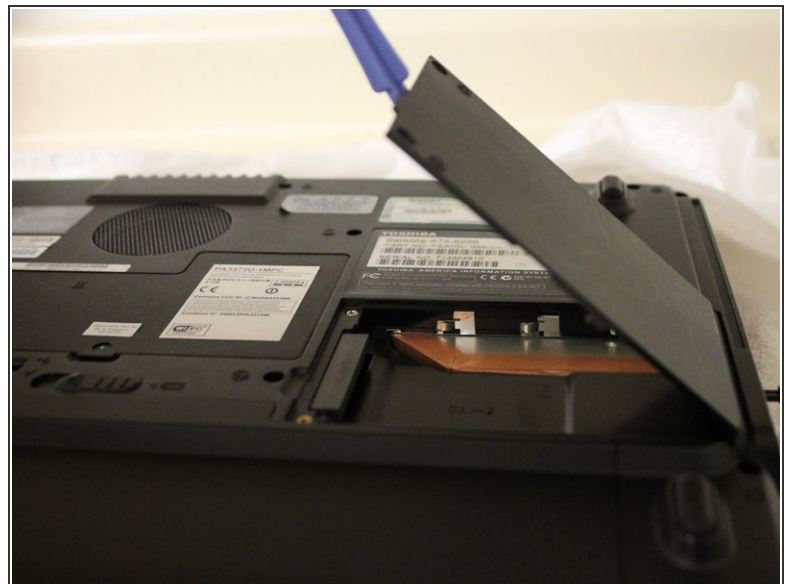
- [Phillips #1 Screwdriver](#) (1)
-

Step 1 — Optical Drive



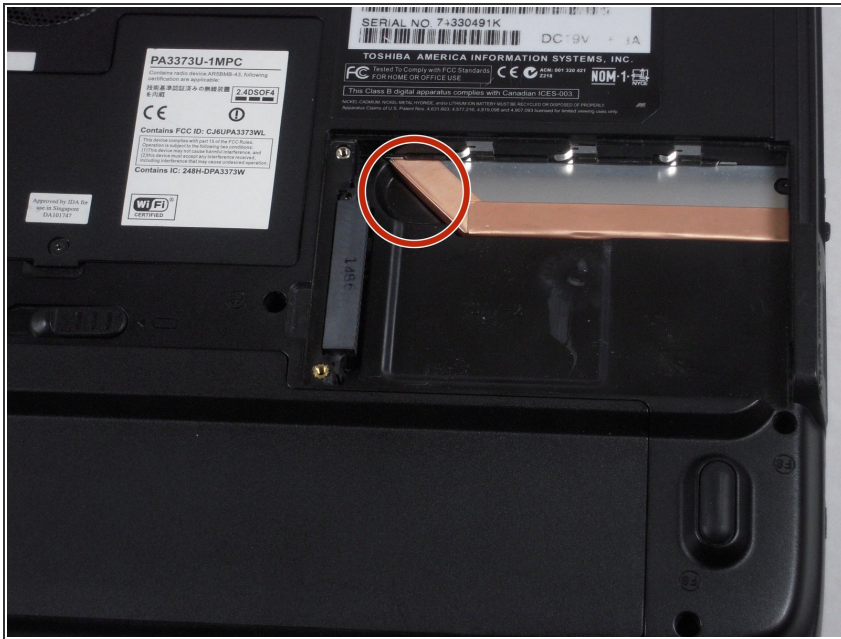
- Remove the two 5.62 mm screws from the optical drive cover.

Step 2



- Remove the optical drive cover.
- A plastic opening tool or a fingernail may be helpful in lifting it from its groove.

Step 3



- Using the inset divot, push the optical drive out of the laptop to remove.

To reassemble your device, follow these instructions in reverse order.

This document was last generated on 2019-07-20 04:22:50 AM.