



Toshiba Satellite A75-S226 Wi-Fi/Memory Cover Replacement

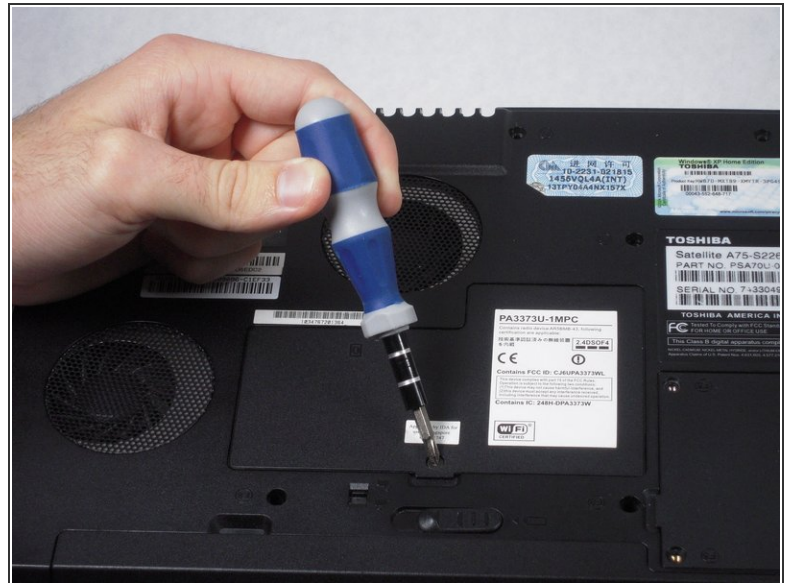
Written By: Garrett Gudgel



 **TOOLS:**

- [Phillips #00 Screwdriver](#) (1)
- [iFixit Opening Tools](#) (1)

Step 1 — Wi-Fi/Memory Cover



- Remove the 5.75 mm screw from the cover panel.
- ⓘ Turn the laptop over with the screen facing down.

Step 2



- Lift up the cover panel using a plastic opening tool.

To reassemble your device, follow these instructions in reverse order.