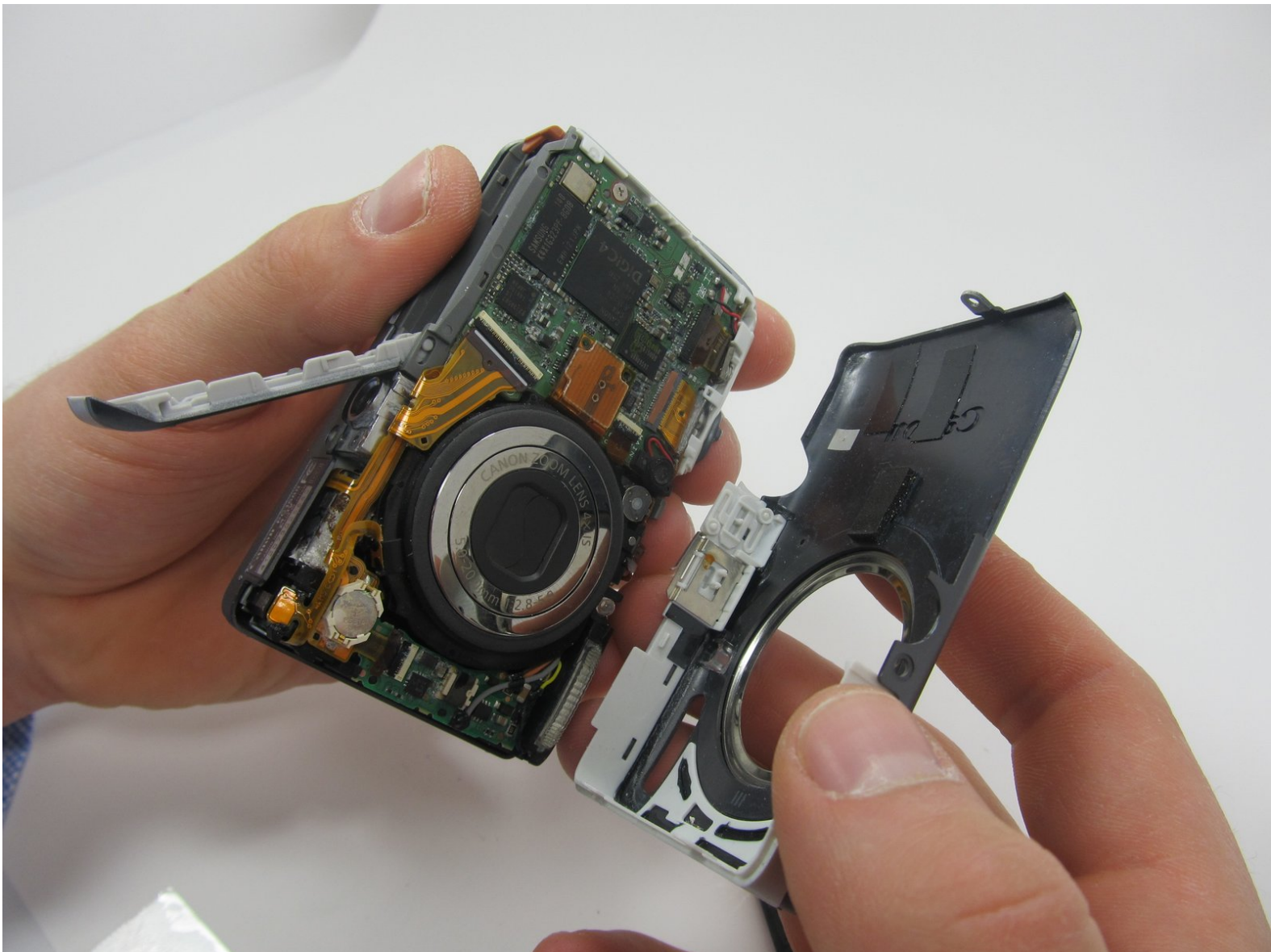




Canon Powershot ELPH 100 HS Outer Case Replacement

This guide will show you how to remove the outer shell of the the powershot ELPH 100 HS camera. This guide will also serve a prerequisite to others.

Written By: Jacob



 **TOOLS:**

- Phillips #00 Screwdriver (1)
 - Spudger (1)
-

Step 1 — Outer Case



- Remove the two 3.1mm screws from the bottom of the camera.
- ☑ The display screen of the camera should be facing towards you.

Step 2



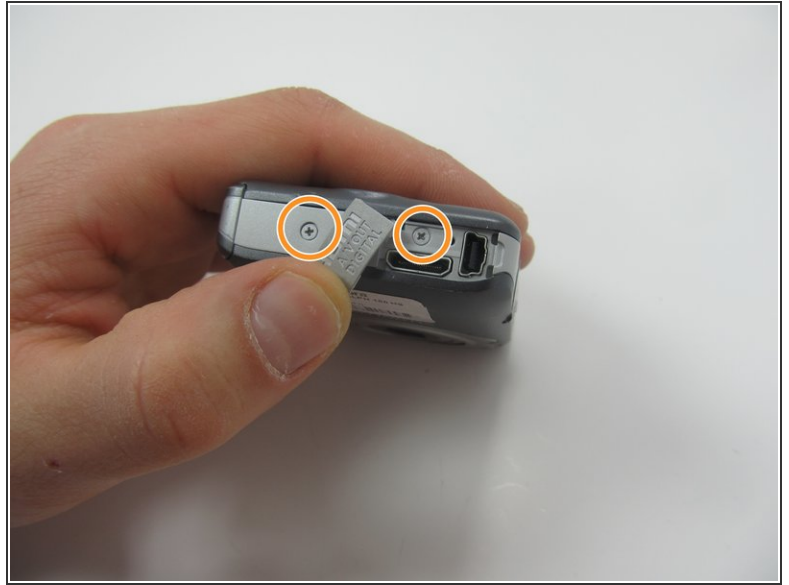
- With the screen facing you, rotate the camera counter clock-wise onto it's side.
- Remove the two 3.1mm screws.

Step 3



- With the screen still facing you, rotate the camera 180 degrees.
- ★ The side with the charging port should now be facing up.

Step 4



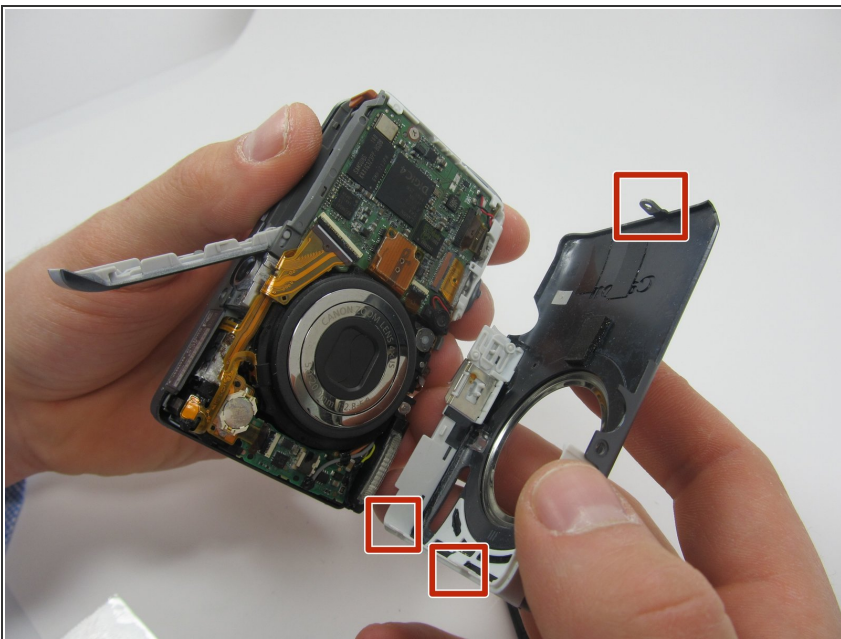
- Use the tool (or fingers) to pry open the charging port cover.
 - Rotate the cover so that you have access to the screw underneath.
 - Remove both 3.1mm screws.
- i** The image still shows the screw from step 3 in place.

Step 5



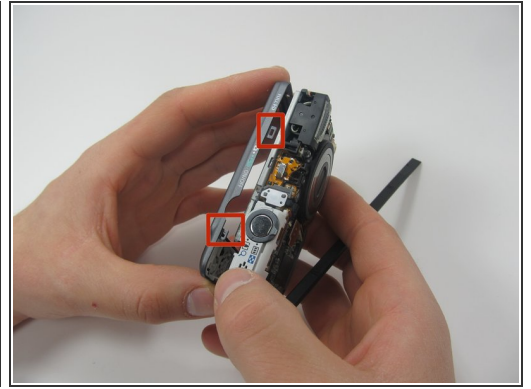
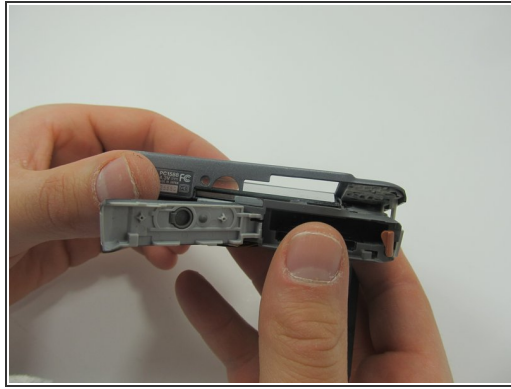
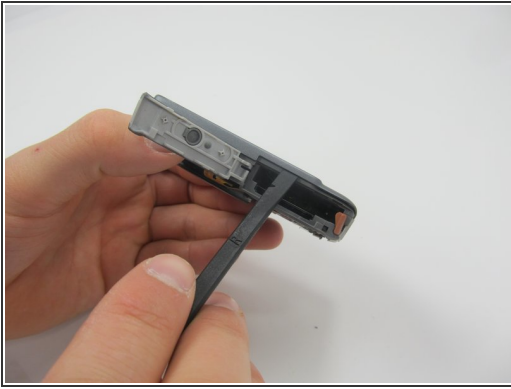
- Turn the camera so the bottom is once again facing up.
- With the battery door still open, use a spudger to remove the cover from the front of the camera.

Step 6




- Pull off the the front cover.
- ⚠ Be careful not to break the tabs that hold it in place.

Step 7



- Use the spudger to remove the back cover.

 Be careful not to break the tabs.

To reassemble your device, follow these instructions in reverse order.