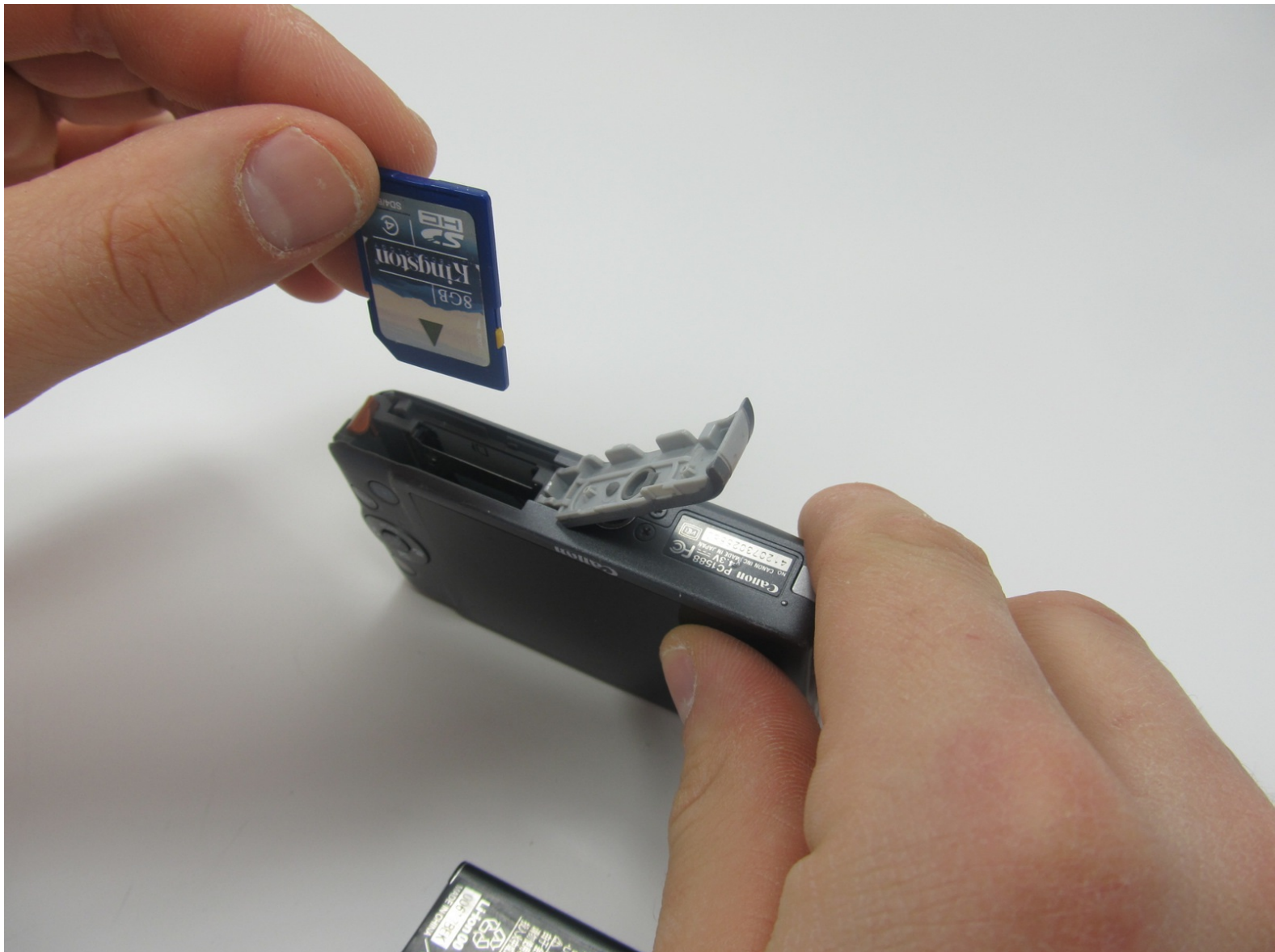




# Canon Powershot ELPH 100 HS Memory Card Replacement

How to remove a Canon Powershot ELPH 100 HS memory card.

Written By: Lillia



## **INTRODUCTION**

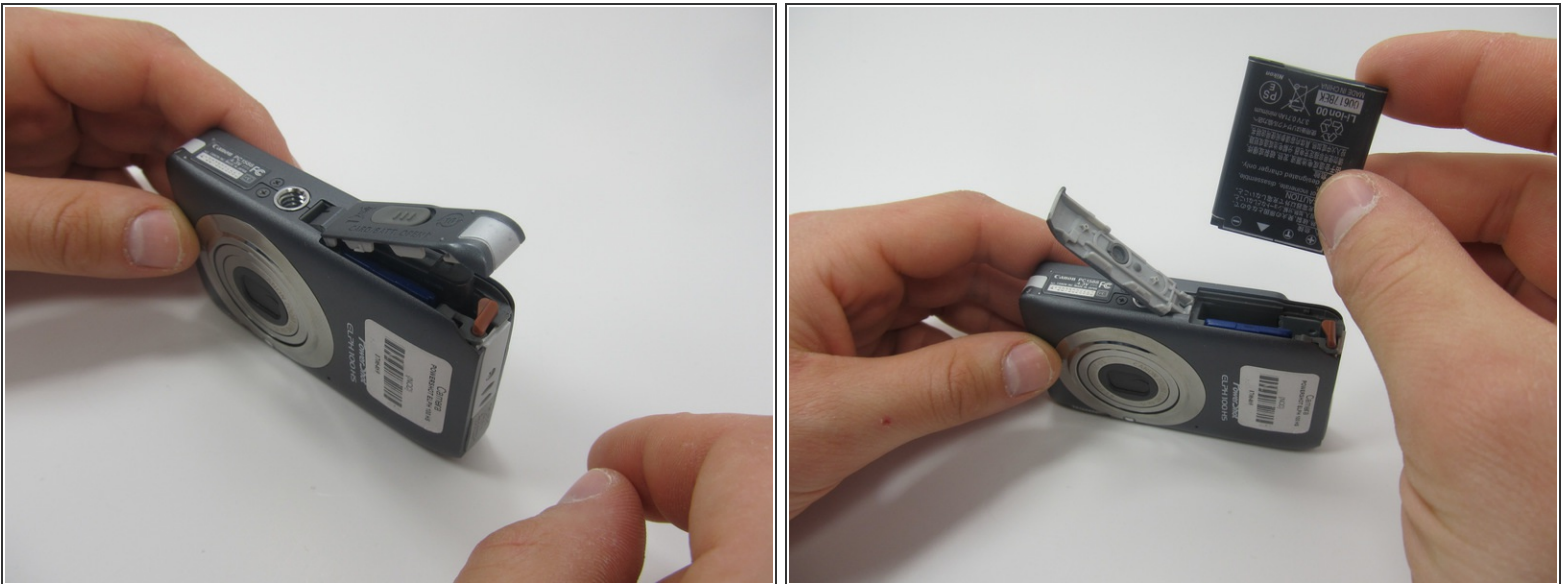
This guide will show you how to remove your camera's memory card when you need to transfer pictures. If the memory card is malfunctioning in any way, you can also use this guide to install a new memory card.

## Step 1 — Battery



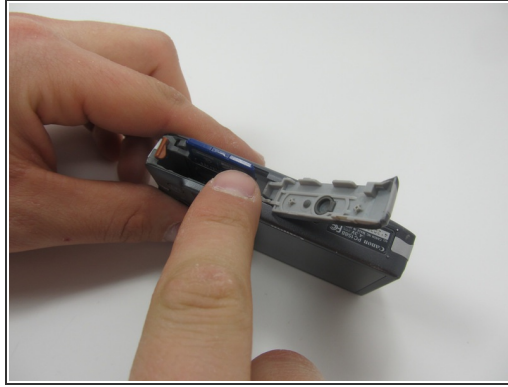
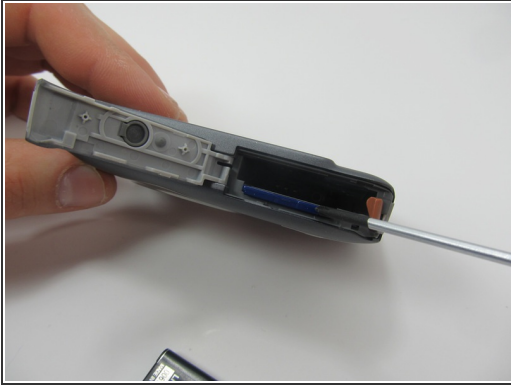
- Locate the battery cover on the bottom of your camera.
- Slide the tab to the right to open the battery cover.

## Step 2



- Flip the battery cover open.
  - Using your fingers, slide the battery out of the camera.
- i** This was not the original battery that came the camera, so yours may look different.

### Step 3 — Memory Card



- Push down on the memory card until it clicks and releases.
- Pull up on the memory card to remove it.

To reassemble your device, follow these instructions in reverse order.

This document was last generated on 2017-12-25 10:00:33 AM.