



iPod 4th Generation or Photo Hard Drive Cable Replacement

Written By: iRobot



INTRODUCTION

Connects the hard drive to the logic board.



TOOLS:

- [iFixit Opening Tools](#) (1)



PARTS:

- [iPod 4G Hard Drive Cable](#) (1)

Step 1 — Rear Panel



- i** Before opening your iPod, ensure that the hold switch is in the locked position. The orange bar should be visible, indicating hold is active.

Step 2



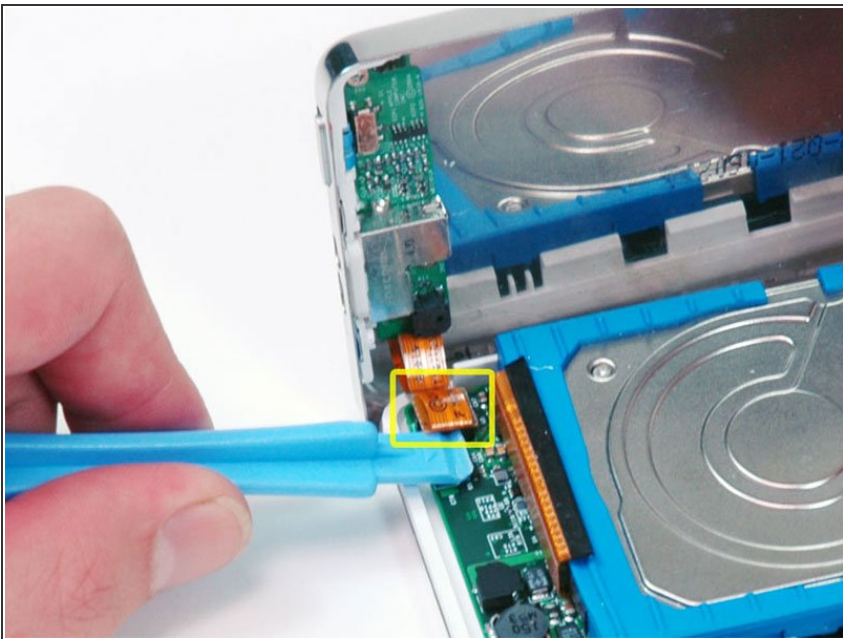
- Insert an opening pick as far as possible into the seam between the plastic front and the metal rear panel, on the right edge of the iPod.
 - ⓘ You may need to rock the pick back and forth to slide it in farther.
- Use the opening pick to pry up against the plastic front panel and release five retaining tabs (seen in the third photo).
- Slide the pick along the edge of the iPod and continue prying to release the rest of the retaining tabs.
- After all five tabs along the right side are free, the case should easily open.

Step 3



- ⓘ The iPod case is now open, but don't separate the two halves just yet. There is still an orange ribbon cable connecting the headphone jack to the logic board.
- Open the case like a book with the dock connector edge at the top, and lay the rear panel next to the front half of the iPod.

Step 4

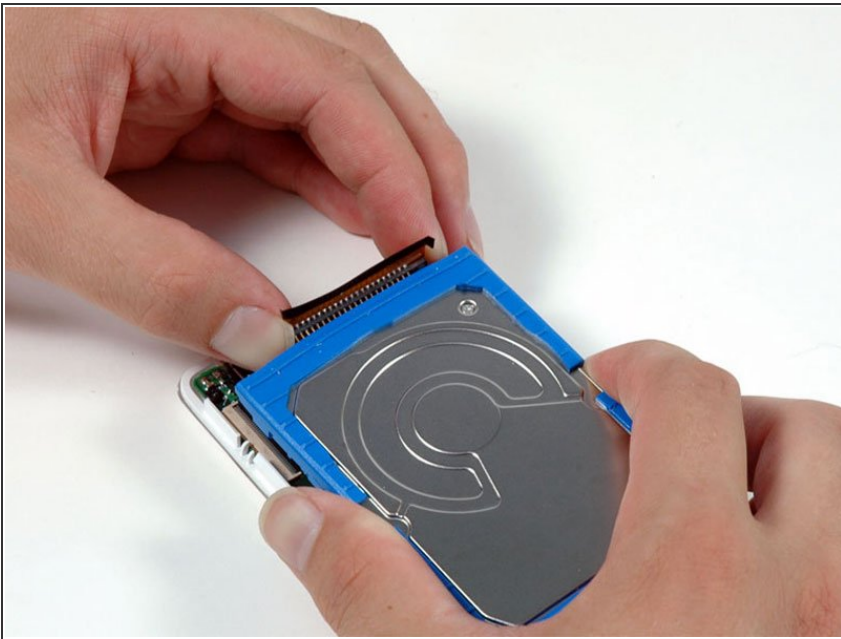


- Use a plastic tool or your fingernails to carefully disconnect the orange headphone jack cable. Be sure to

pull straight up on the connector, not the cable itself.

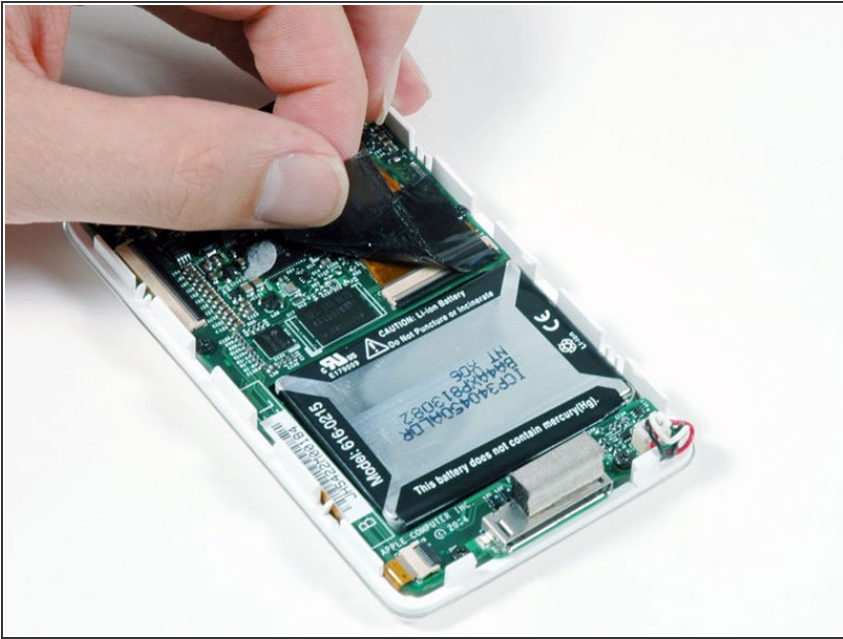
- ⓘ This ribbon cable is very fragile. If you are replacing the battery, you can choose to skip this step and keep the headphone jack connected to the motherboard. Prop and tape the rear case against a box to keep it in place. Be very careful not to strain the fragile headphone jack cable as you work.

Step 5 — Hard Drive



- Grasp the hard drive with one hand and carefully disconnect the orange ribbon cable from the hard drive using your other hand.
- ⓘ If the cable doesn't come free easily, it may be helpful to gently wiggle the cable from side to side.

Step 6 — Hard Drive Cable



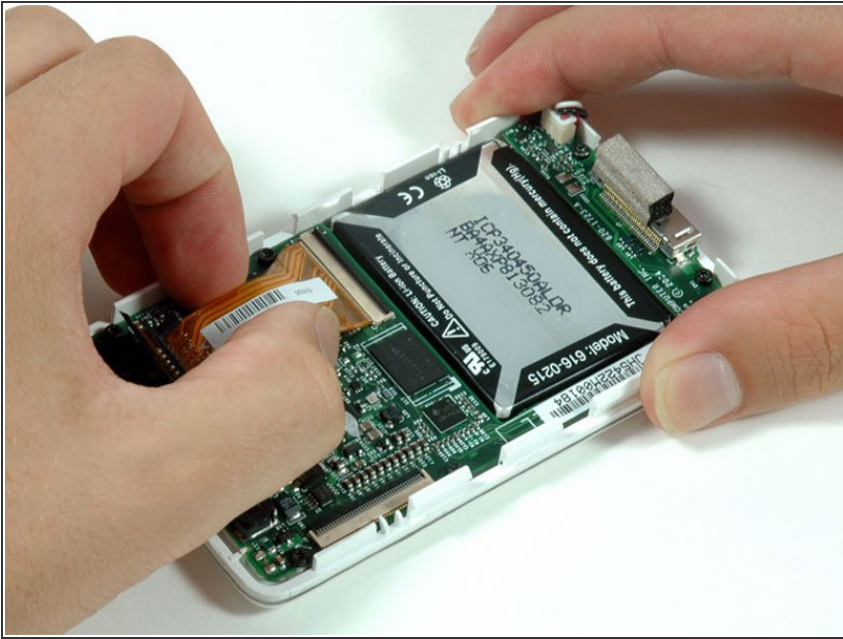
- Peel up the black adhesive strip covering the hard drive ribbon cable.

Step 7



- Use the tip of your finger or a spudger to carefully flip up the black connector securing the hard drive cable to the logic board. Note that the black retaining clip flips 90 degrees toward vertical, in the direction of the cable.

Step 8



- Pull the orange hard drive cable directly out of its connector.

To reassemble your device, follow these instructions in reverse order.