



Samsung Galaxy Tab 2 7.0 Battery Replacement

This guide will teach you how to access the Samsung Galaxy Tab 2 7.0 battery and how to remove it.

Written By: Paul



This document was generated on 2019-09-19 06:47:07 AM (MST).

INTRODUCTION

Use this guide to replace the 4000 mAh 3.7V Battery for the Samsung Galaxy Tab 2 7.0



TOOLS:

- [Magnetic Project Mat](#) (1)
- [Phillips #00 Screwdriver](#) (1)
- [iFixit Opening Tools](#) (1)



PARTS:

- [Galaxy Tab 2 7.0 \(Wi-Fi\) Rear Case](#) (1)

Step 1 — Preparing Your Device




- Power the device down completely
- Remove the SD card from the SD card slot.

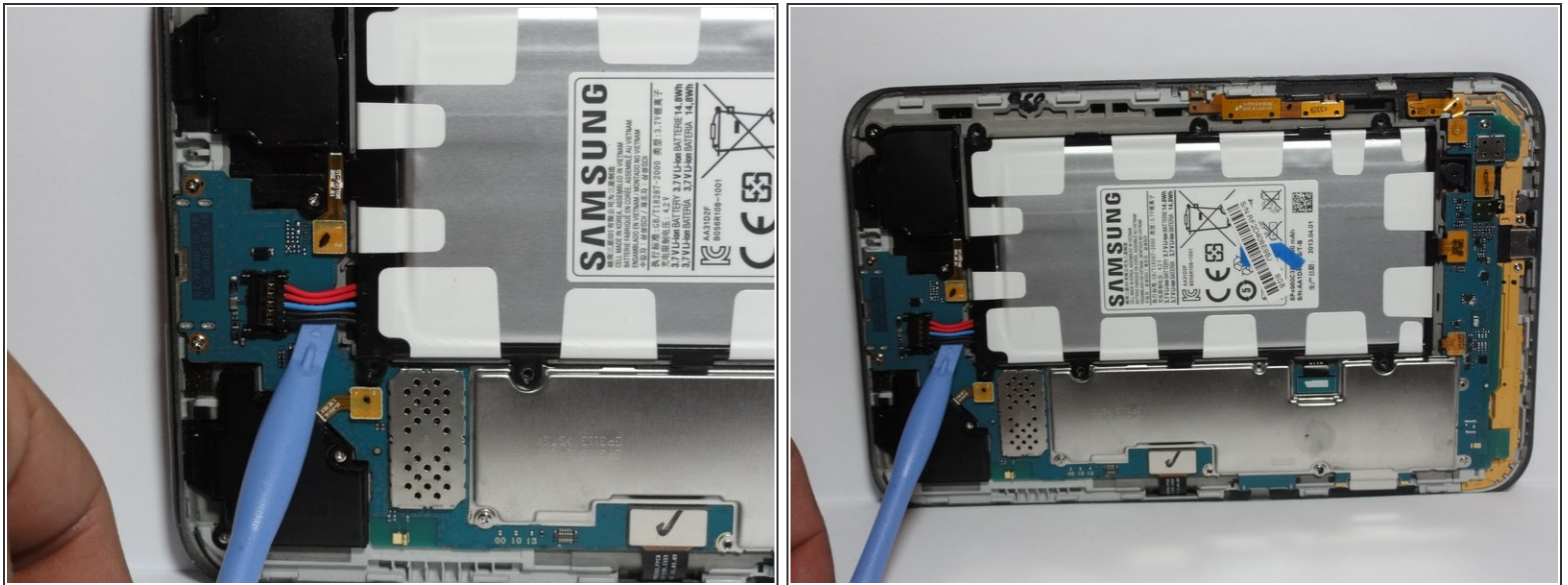
Step 2



- Use the prying tool to separate the front and rear panels by slipping the tool underneath the screen edge and sliding it around the entire device.

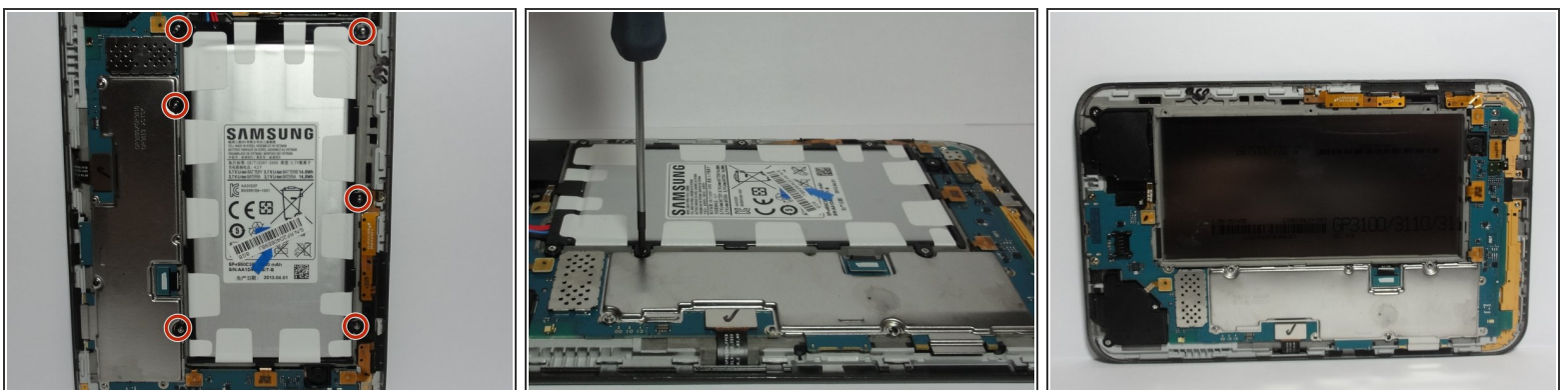
 Be sure to unclip all of the clips on the back panel or it will be difficult for you to pull it off and may damage the tablet.

Step 3



- Remove the battery Flex Cable from its socket by placing the pry tool under the wires and gently prying it out.
- ⓘ When you are placing in the new battery, it helps to connect the socket first or else it becomes difficult to properly align once the battery is in place.

Step 4



- Using the Phillips precision screw driver remove the six 4 mm screws holding the battery in place.
- Once the battery is loose, remove as shown.

To reassemble your device, follow these instructions in reverse order.

This document was generated on 2019-09-19 06:47:07 AM (MST).

