



# dreamGEAR Quad Dock Pro Prerequisite Guide

Prerequisite Guide only

Written By: Jacob



---

## INTRODUCTION

To complete this guide, you will need a PH 0 screwdriver and a spudger or similar prying device to access the interior of the Quad Dock Pro.

---

### TOOLS:

- [Phillips #0 Screwdriver](#) (1)
  - [iFixit Opening Tools](#) (1)
-

## Step 1 — Prerequisite Guide to Accessing Interior



- Remove the rubber foot pads on the bottom of the device using a plastic opening tool.

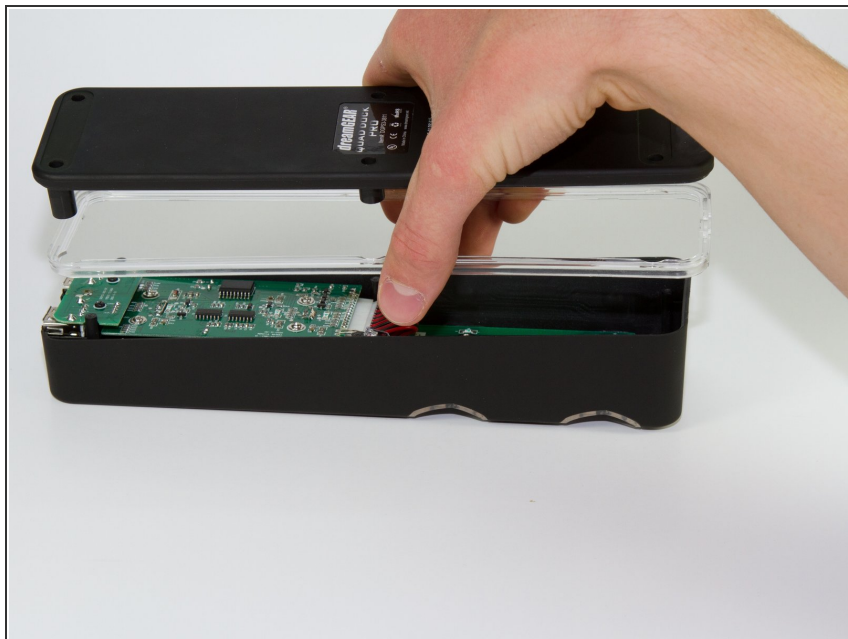
## Step 2



- Remove the six 2 mm PH0 screws on the bottom of the device.

**i** Four of those screws are located under the foot pads.

## Step 3



- Gently remove the bottom of the device.

To reassemble your device, follow these instructions in reverse order.

This document was last generated on 2019-08-21 09:37:34 AM.