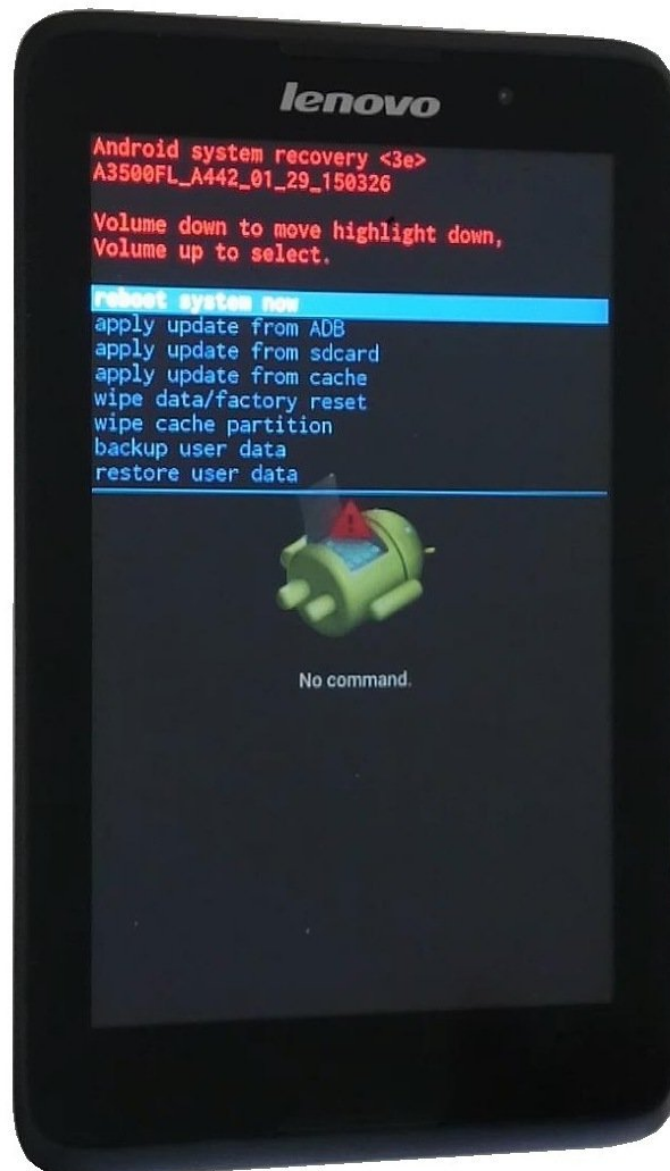




# Lenovo A7-40, A7-50 A3500 Factory Reset

How to Factory Reset Lenovo A7-50 A3500 (A3500-F, A3500-FL, A3500-H, A3500-HD)

Written By: ZFix



---

## INTRODUCTION

If you forgot your password, screen lock or you have a problem with the Android OS or you want to erase all information from your table, you can do this with a Factory, Hard reset.

You can do this from **Android System Recovery menu** or from **Factory mode menu**.

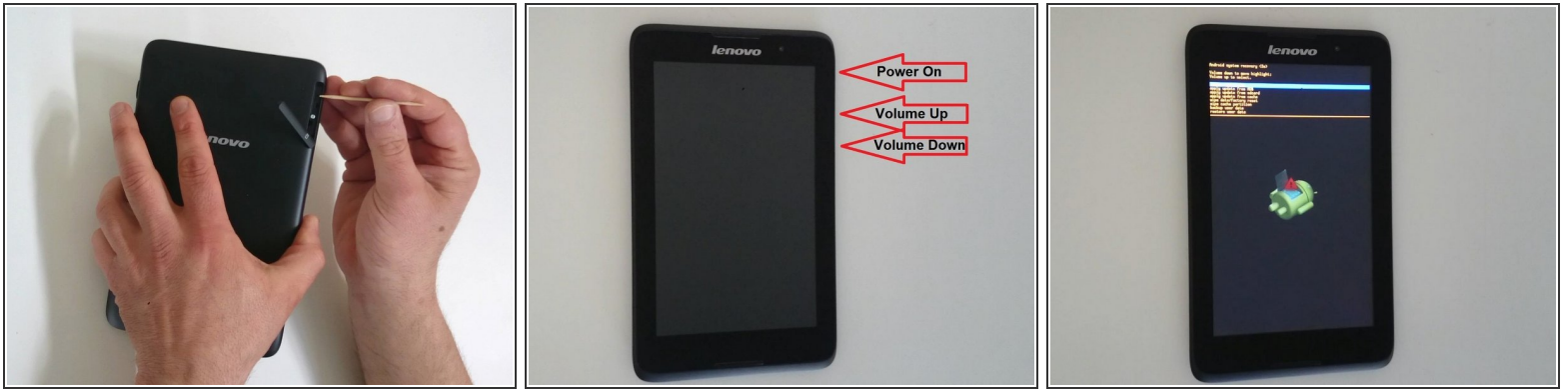
[video: <https://youtu.be/L2nFwGzfReg>]

---

## TOOLS:

- [SIM Card Eject Tool](#) (1)
-

## Step 1 — Factory Reset - Method 1



- 1. Switch of the tablet. If the device freezes, you can use a reset hole under the memory card reader cover.
- 2. Press and hold: Volume Up + Volume Down + Power buttons.
- 3. In the Recovery menu, use the Volume Down button to move the highlight and the Volume Up to select.
- 4. Choose one by one: "wipe data/factory reset", "Yes -- delete all user data" and finally "reboot system now".

## Step 2 — Factory Reset - Method 2



- 1. Switch off the tablet.
- 2. Press and hold the Volume Up and Power On keys.
- 3. When you feel release only the Power button. Now your device is in Factory mode.
- 4. Use the Volume Up/Down keys for movement and the Power key for select.
- 5. Select ¶§ eMMC (Clean eMMC)
- -----
- -----
- **Did you do it successfully?**

To reassemble your device, follow these instructions in reverse order.