



# Hisense Sero 8 Front and Back Camera Set Replacement

This guide demonstrates how to replace the front and back camera set in the Hisense Sero 8.

Written By: Katherine



---

## INTRODUCTION

After extended use, the camera on your device may lose its proper function. Your front/back camera may be defective. Use this guide to replace the front and back camera set.

---

### TOOLS:

- [iFixit Opening Tools](#) (1)
  - [Spudger](#) (1)
-

## Step 1 — Front and Back Camera Set



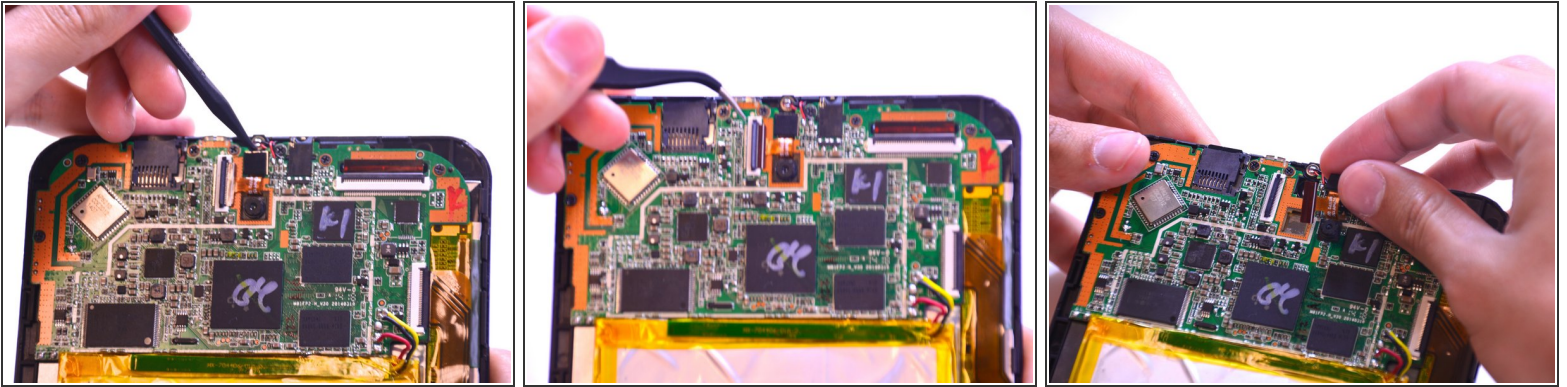
- Remove the back cover of the device using a combination of both plastic opening tools.
- Use your plastic opening tool pry open a corner of the device, then continue down the side of the device with the tool to completely open the device.

## Step 2



- Pull the latch up towards you to unlock the ribbon cable using your fingers.

## Step 3



- Lift the camera from the motherboard with the pointed end of the spudger.
- Carefully pull out the camera set with the tweezers.

To reassemble your device, follow these instructions in reverse order.

This document was last generated on 2019-07-16 05:05:58 PM.