



Hisense Sero 8 Motherboard Replacement

This guide demonstrates how to replace the Motherboard in the Hisense Sero 8.

Written By: Katharina



INTRODUCTION

After extended use, the motherboard may become defunct and the device may require a new piece.

TOOLS:

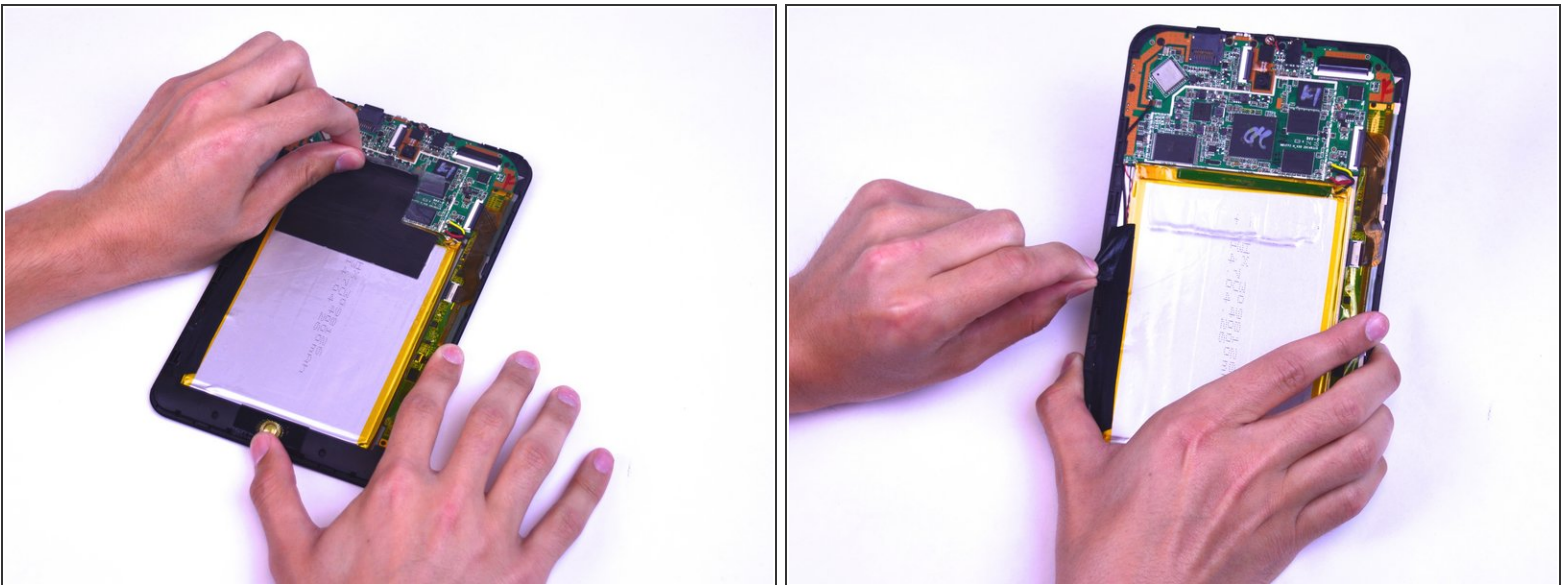
- [iFixit Opening Tools](#) (1)
 - [Phillips #00 Screwdriver](#) (1)
 - [Soldering Iron](#) (1)
-

Step 1 — Motherboard



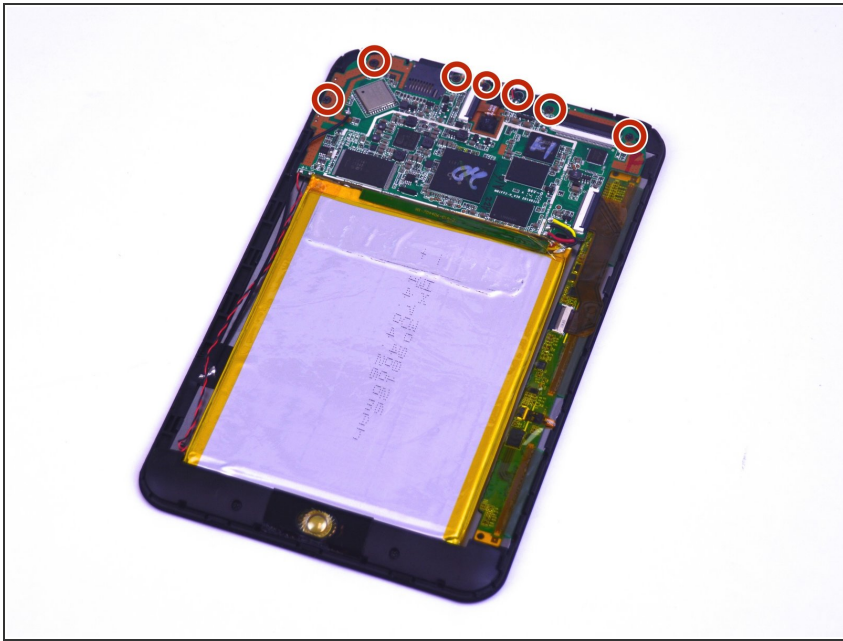
- Remove the back cover of the device using a combination of both plastic opening tools.
- Use your plastic opening tool pry open a corner of the device, then continue down the side of the device with the tool to completely open the device.

Step 2



- Remove the black tape that is located to the left of the device.
- Remove the clear tape directly below the camera.

Step 3



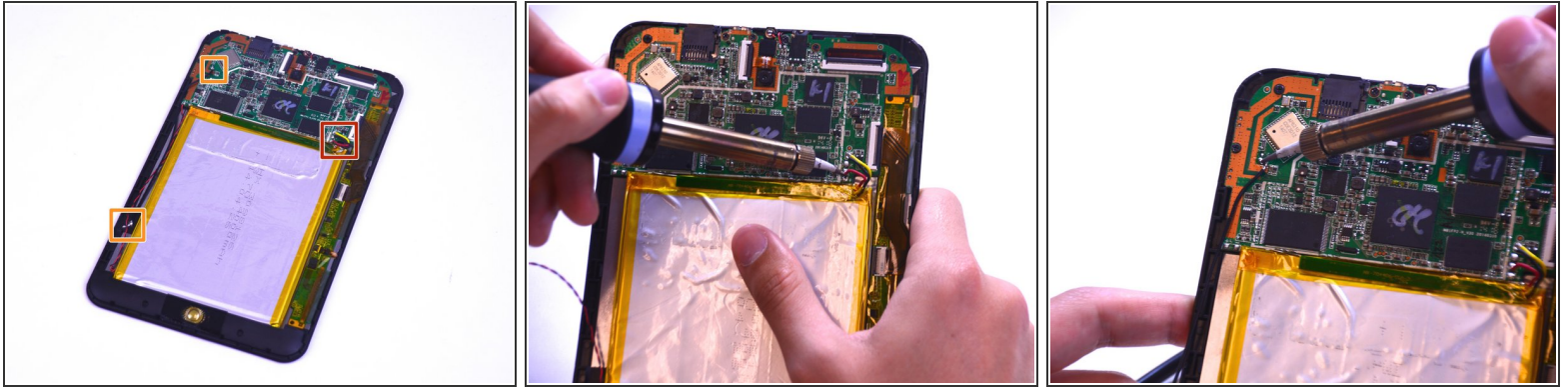
- Remove seven of the 4.43mm screws using the Philips #00 screwdriver.
- ⓘ It is not necessary to remove the bottom two 4.43mm screws that keep the speakers in place.

Step 4



- Unlock both latches to the ribbon cable connectors to remove the ribbon cables.

Step 5



- Unsolder the red, black, and yellow wires to properly remove the motherboard. Take a look at this [guide](#) to learn how to solder and unsolder connections.
- Unsolder the black wire located on the top left of the device.
- Once unsoldered, carefully lift the motherboard out of the device.

To reassemble your device, follow these instructions in reverse order.

This document was last generated on 2019-07-19 04:32:50 PM.