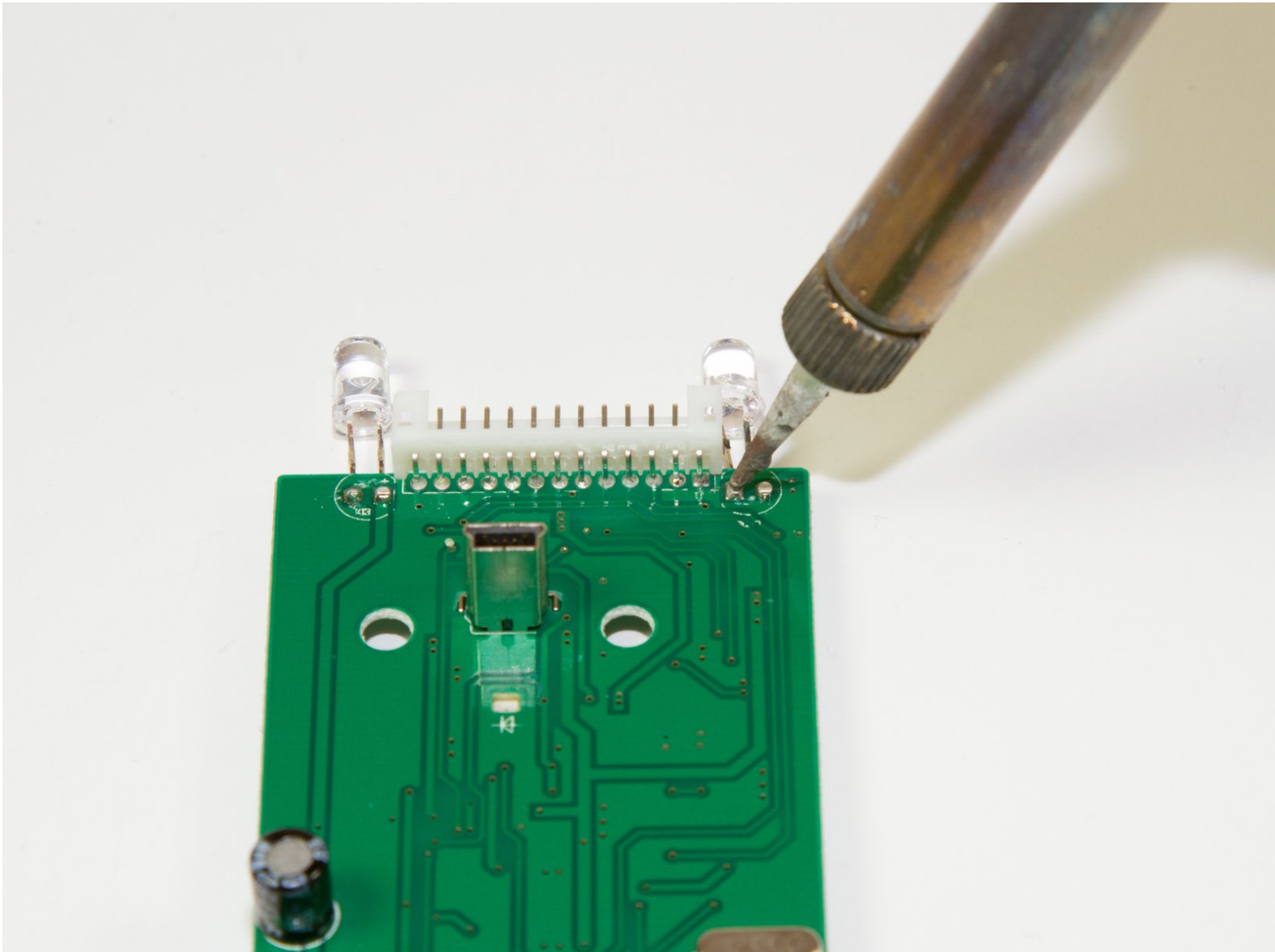




dreamGEAR Quad Dock Pro LEDs Replacement

A guide to replacing a malfunctioning LED.

Written By: Jacob



INTRODUCTION

While the LEDs should not interfere with the function of the Quad Dock, it is nice to see them work. Find out how to replace them.

TOOLS:

- [Phillips #0 Screwdriver](#) (1)
 - [Soldering Iron](#) (1)
 - [iFixit Opening Tools](#) (1)
-

Step 1 — Prerequisite Guide to Accessing Interior



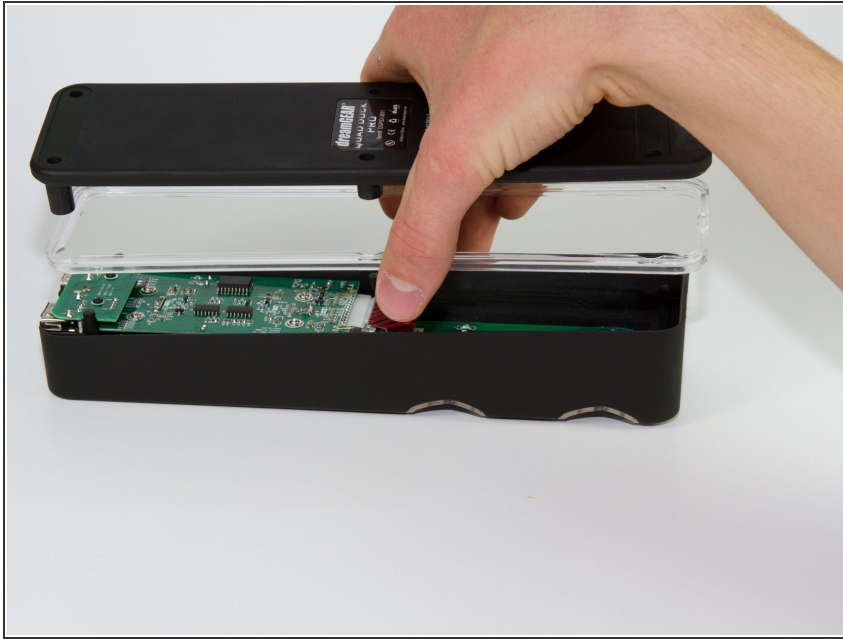
- Remove the rubber foot pads on the bottom of the device using a plastic opening tool.

Step 2



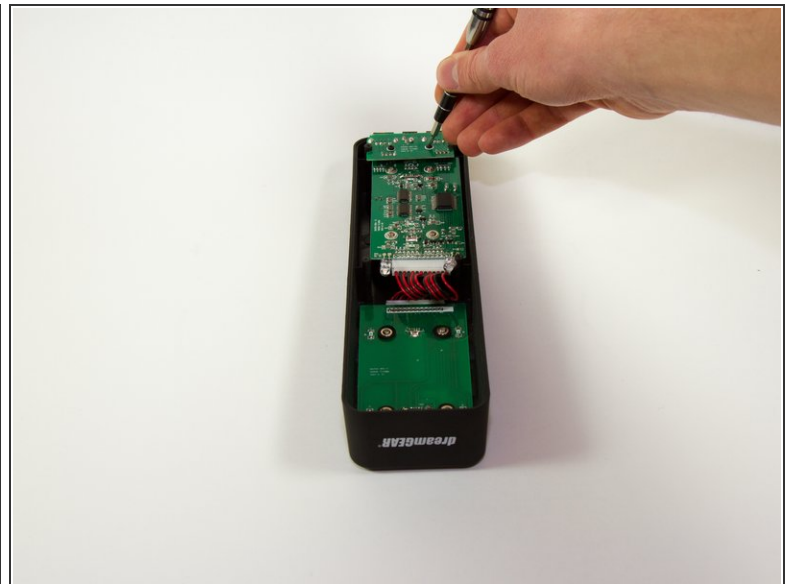
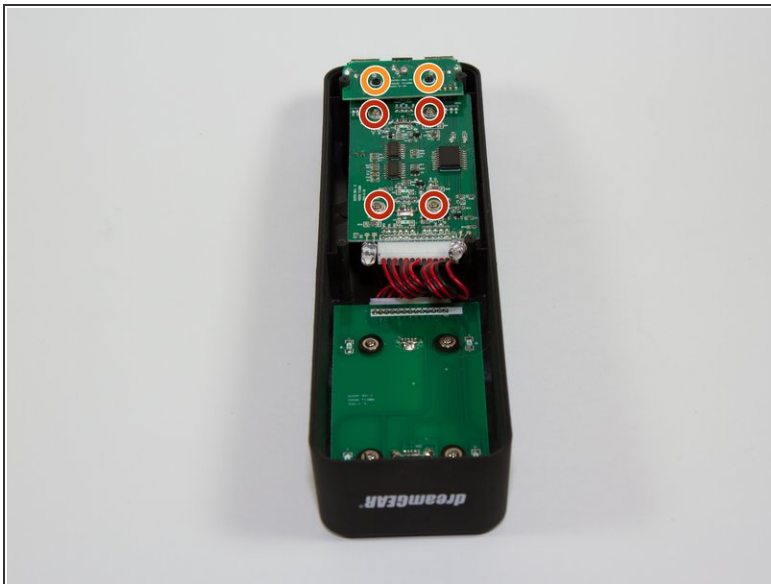
- Remove the six 2 mm PH0 screws on the bottom of the device.
- ⓘ Four of those screws are located under the foot pads.

Step 3



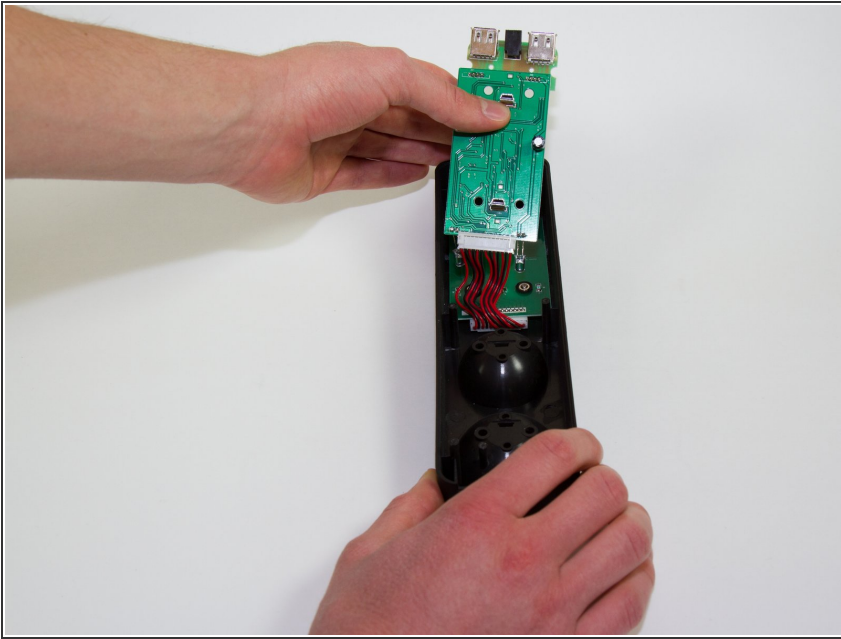
- Gently remove the bottom of the device.

Step 4 — Mother Board



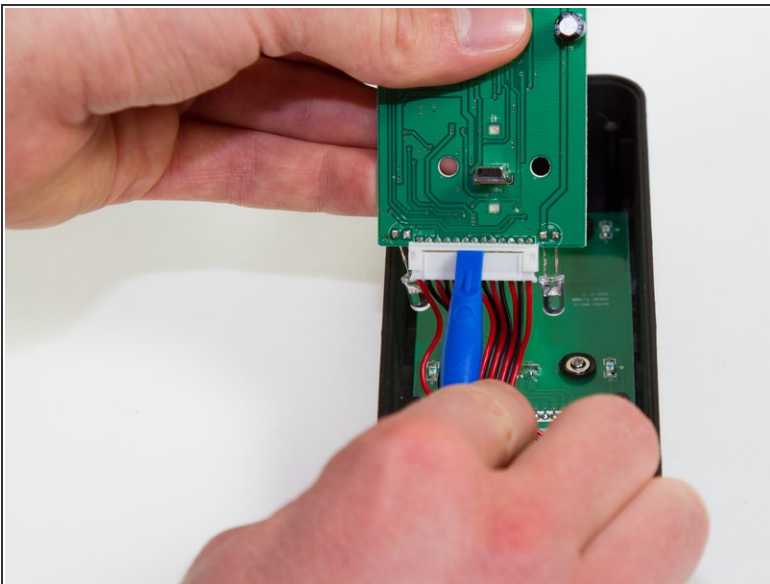
- Remove the six screws holding the motherboard in. Two are 2mm PH0 screws (circled in orange), four are 1.8 mm J1 screws (circled in red).

Step 5



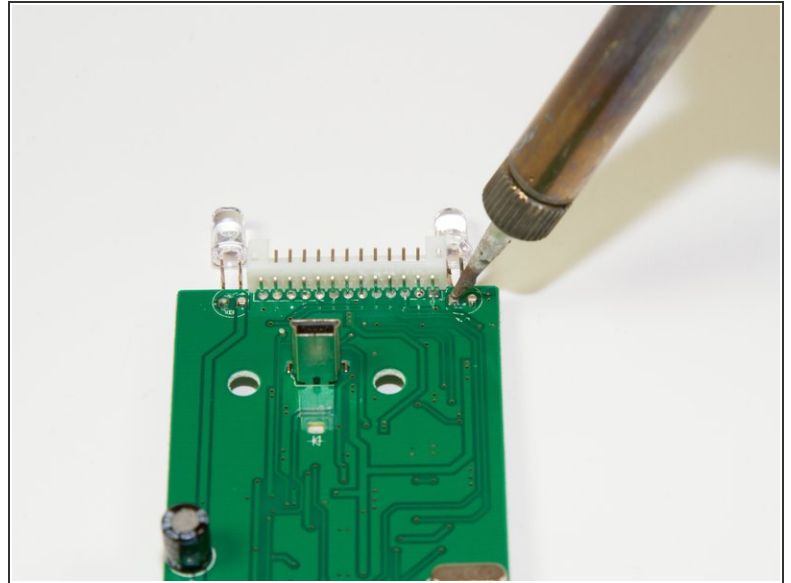
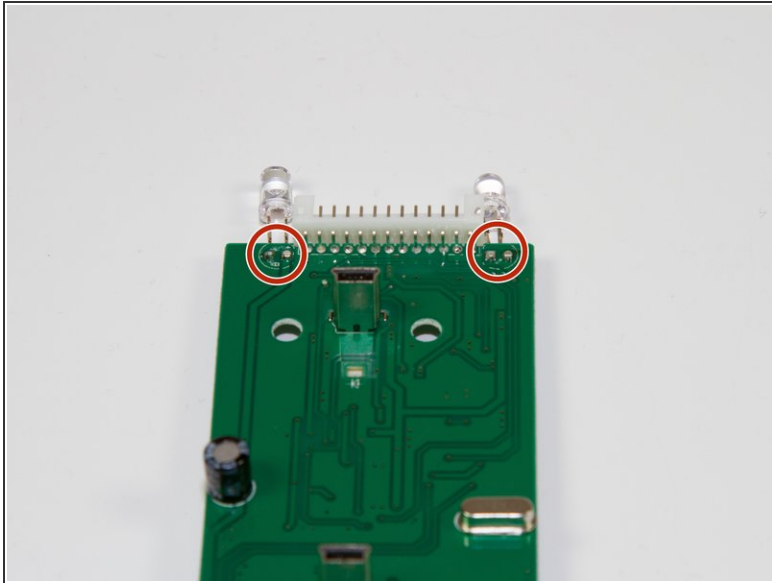
- Gently pick up the mother board
- ⚠ Pick the mother board straight up or you may risk damaging the mini-USB charging ports.

Step 6



- Use a plastic opening tool or similar tool to gently pry the power ribbon cord out of its port.

Step 7 — LEDs



- Desolder the two points following the instructions included in your soldering kit as you remove the light.

⚠ FIRE HAZARD! BURN DANGER! Follow all the safety precautions included with your soldering kit.

i You can follow iFixit's guide to soldering [here](#).

To reassemble your device, follow these instructions in reverse order.