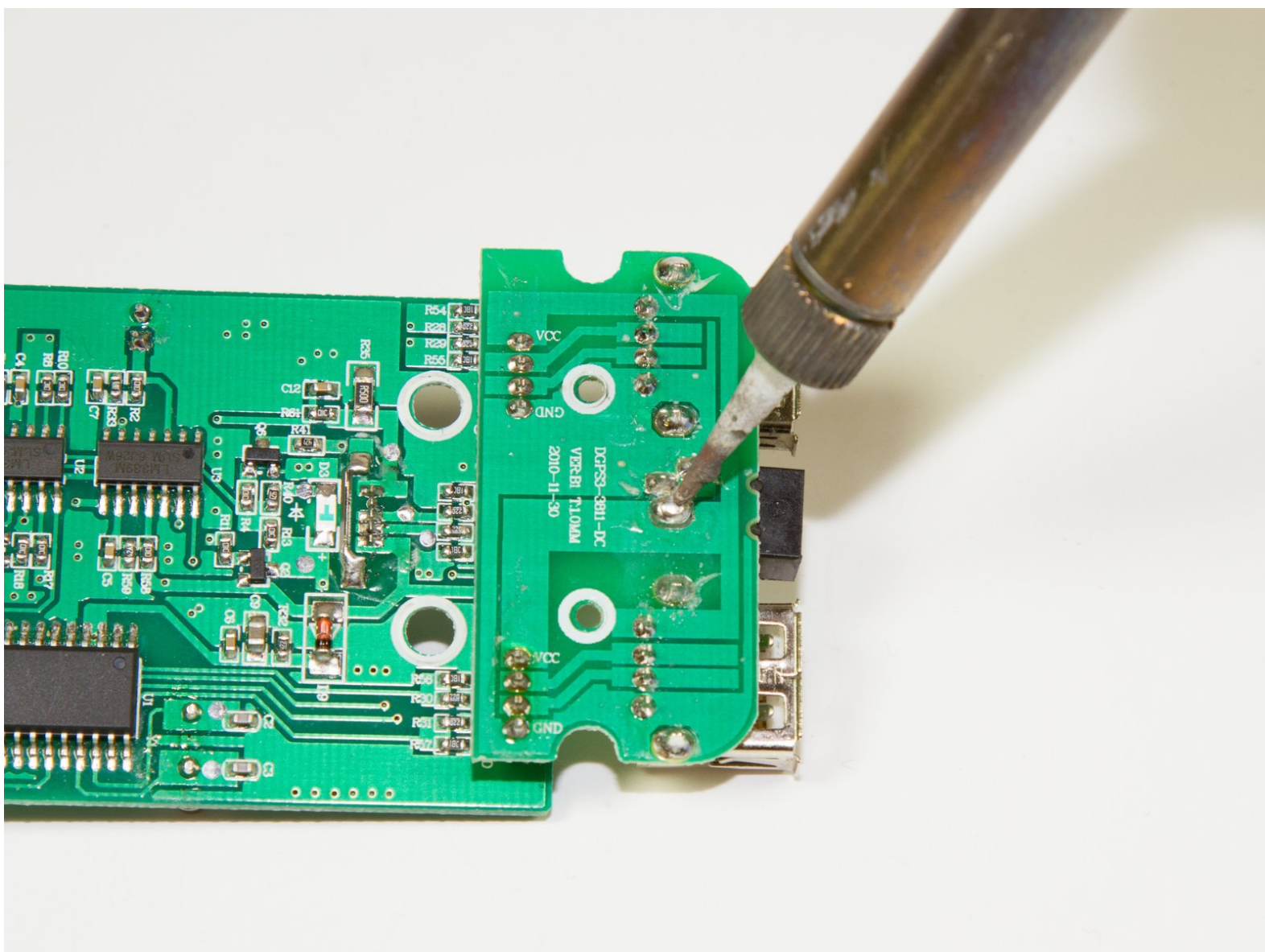




dreamGEAR Quad Dock Pro Electrical Port Replacement

Guide for replacing the electrical port of the dreamGEAR Quad Dock Pro.

Written By: Jacob



INTRODUCTION

This is where all of the power comes into the device. Learn how to replace it. Be careful while soldering!

TOOLS:

- [Phillips #0 Screwdriver](#) (1)
 - [Spudger](#) (1)
 - [Soldering Iron](#) (1)
 - [iFixit Opening Tools](#) (1)
-

Step 1 — Prerequisite Guide to Accessing Interior



- Remove the rubber foot pads on the bottom of the device using a plastic opening tool.

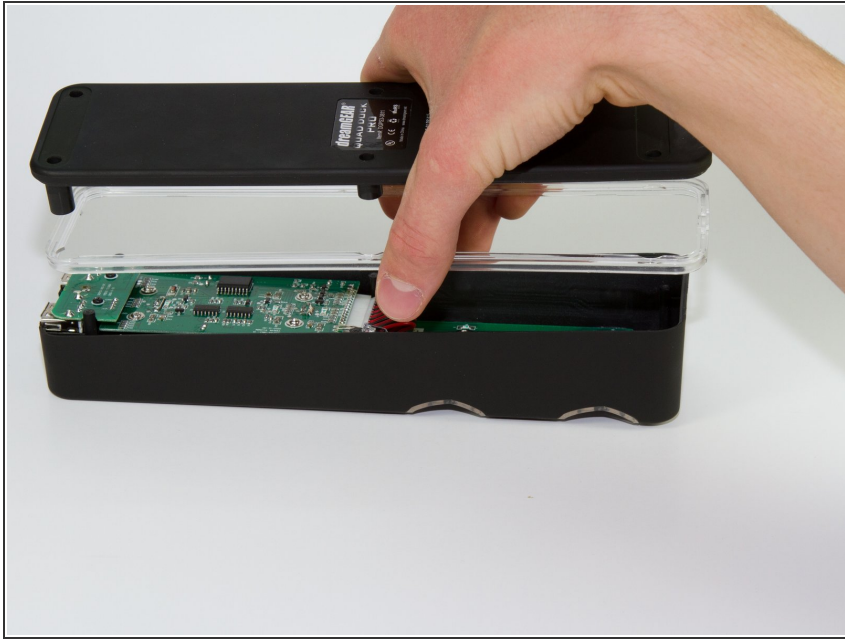
Step 2



- Remove the six 2 mm PH0 screws on the bottom of the device.

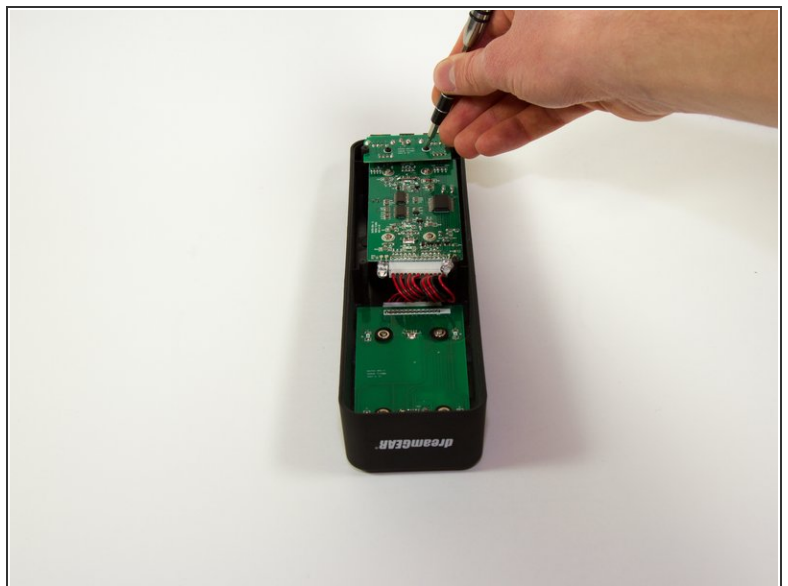
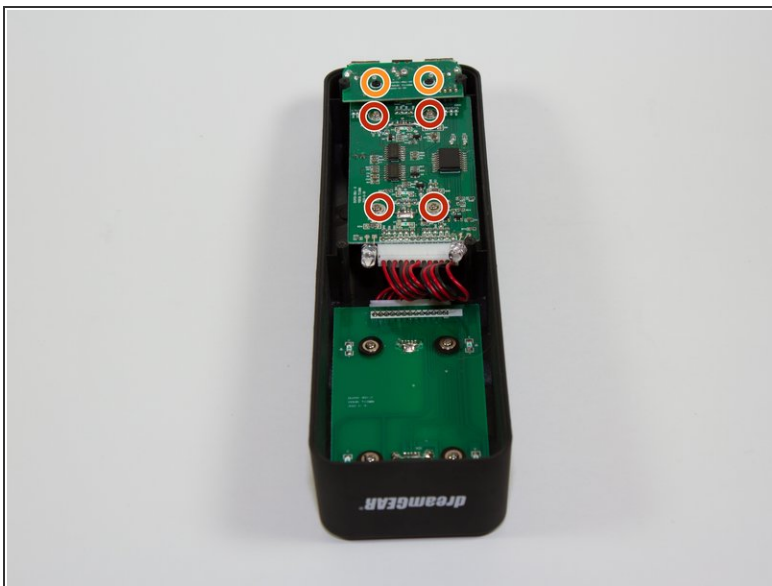
i Four of those screws are located under the foot pads.

Step 3



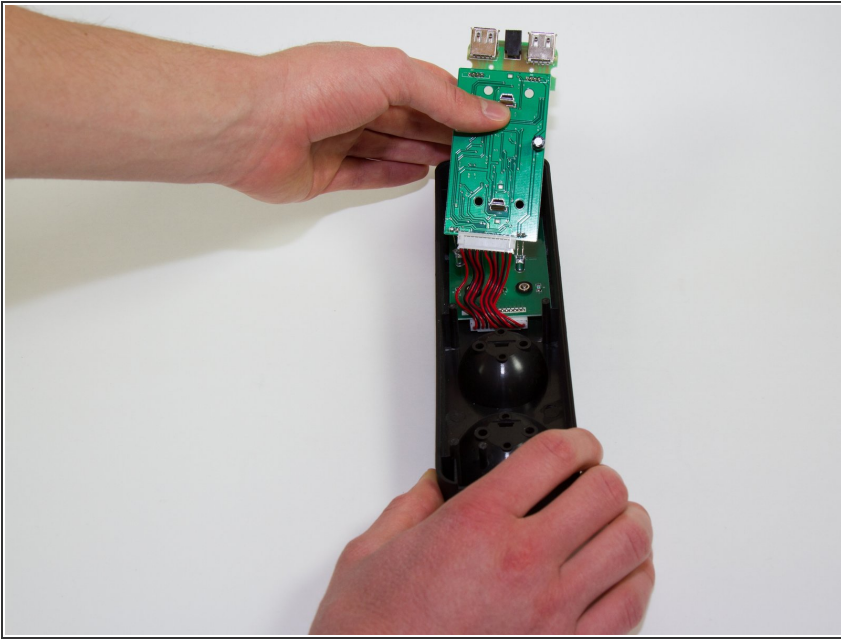
- Gently remove the bottom of the device.

Step 4 — Mother Board



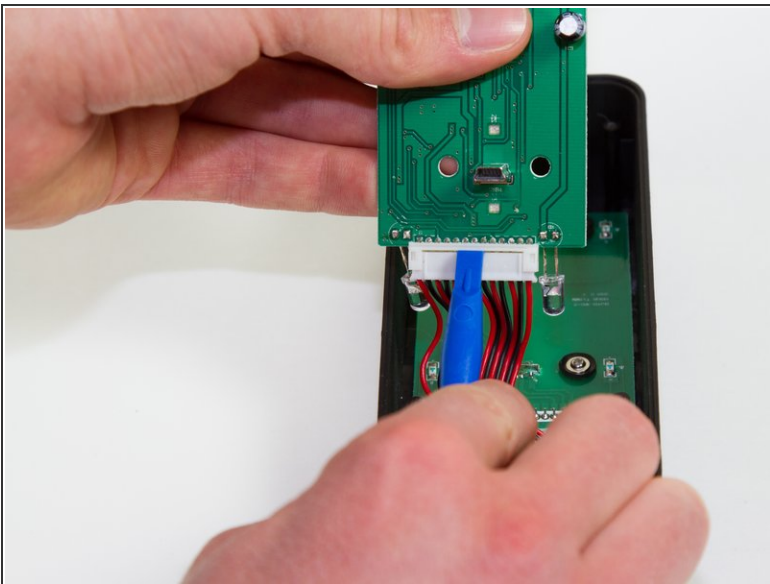
- Remove the six screws holding the motherboard in. Two are 2mm PH0 screws (circled in orange), four are 1.8 mm J1 screws (circled in red).

Step 5



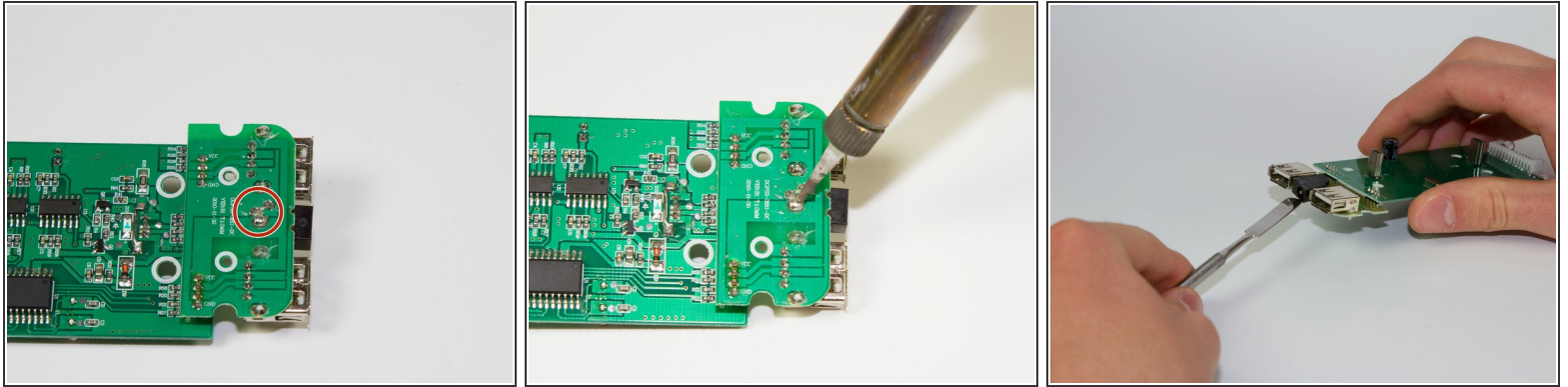
- Gently pick up the mother board
- ⚠ Pick the mother board straight up or you may risk damaging the mini-USB charging ports.

Step 6



- Use a plastic opening tool or similar tool to gently pry the power ribbon cord out of its port.

Step 7 — Electrical Port



- Locate the three solder connections for the electrical port.
 - Desolder the connection points following the instructions included with your soldering kit as you remove the port.
- ⚠ FIRE HAZARD! BURN DANGER!** Follow all the safety precautions included with your soldering kit.
- ⓘ It is helpful to use a nylon or metal spudger or tweezers for the removal of this component, pieces of which are very hot.
 - ⓘ You can follow iFixit's guide to soldering [here](#).

To reassemble your device, follow these instructions in reverse order.

This document was last generated on 2019-07-10 06:03:46 PM.