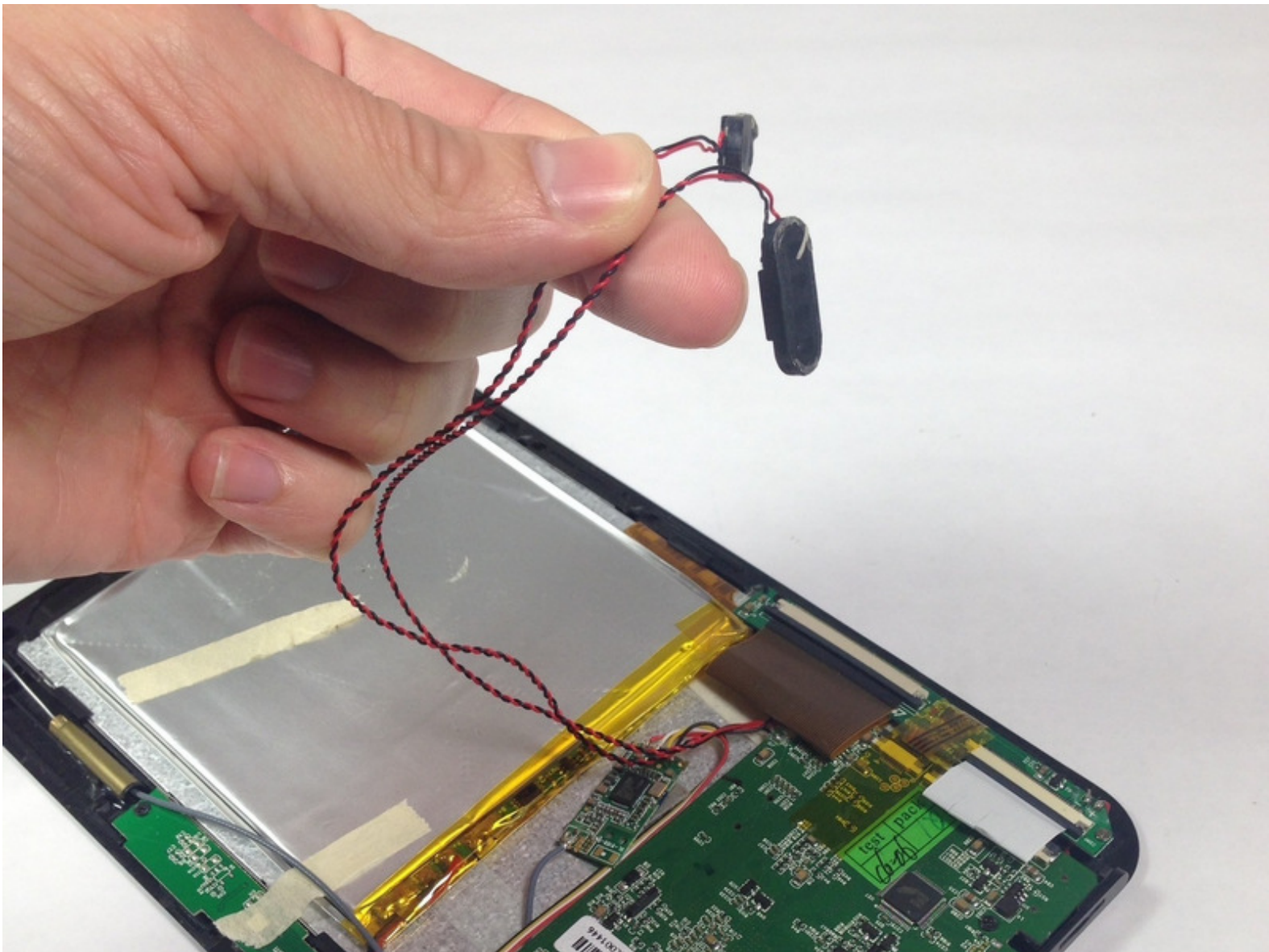




Ematic Eglide 4 Speaker Replacement

This guide will help you replace the speakers for your Emetic eGlide 4.

Written By: Bailey Hughes



INTRODUCTION

This guide will help you replace the internal speakers for your Ematic eGlide 4 and where to locate the speaker connection. The speakers are connected to the rear panel using a mild adhesive that does not need special care. The speakers are also connected to the motherboard via soldered wire connections, which must be desoldered in order to replace the speakers.



TOOLS:

- [Phillips #00 Screwdriver](#) (1)
- [Soldering Station](#) (1)
- [Desoldering Braid](#) (1)
- [Solder](#) (1)



PARTS:

- [Ematic eGlide 4 speakers](#) (1)

Step 1 — Rear Panel



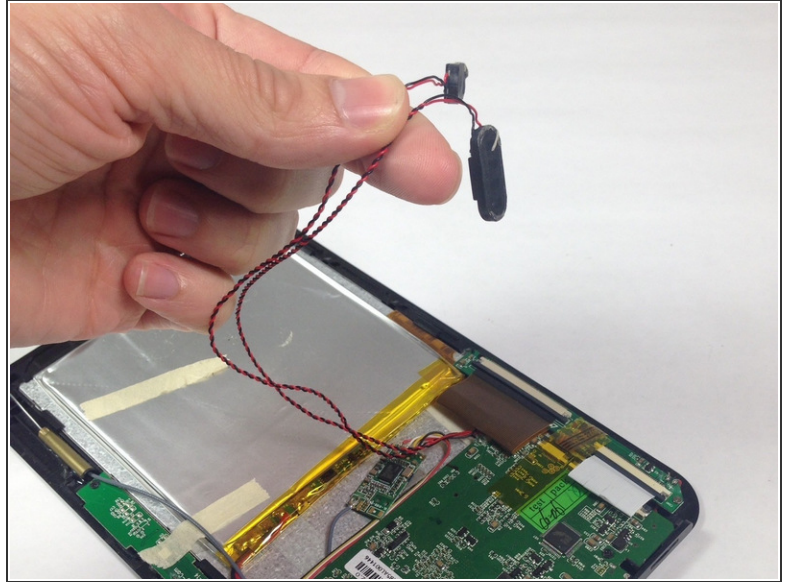
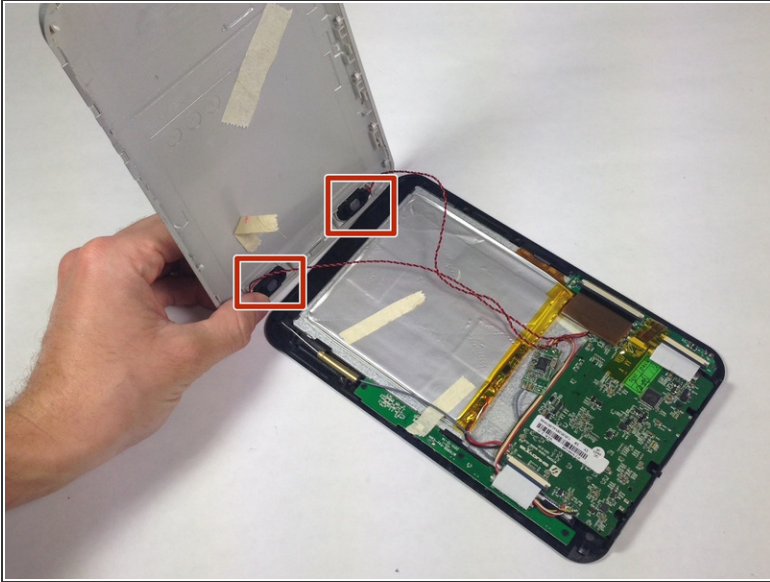
- Remove the 4.6mm Phillips #00 screw at the base of the device.

Step 2



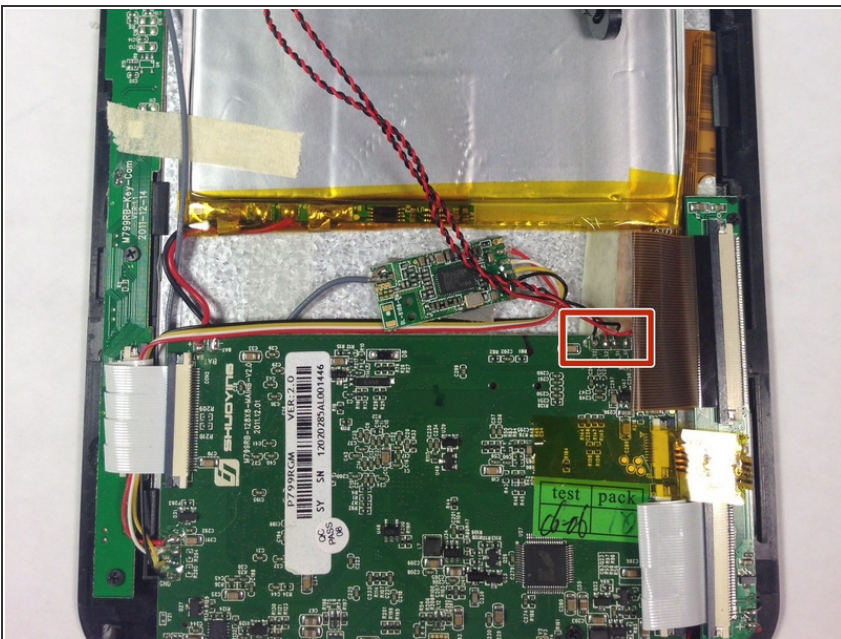
- Slide the rear panel away from the base parallel to the screen.

Step 3



- Carefully remove the speakers from the rear panel.
- Pull the speakers off of the rear panel.

Step 4 — Speaker



- Desolder the 4 speaker wire connections.
- ⓘ See ifixit's guide to soldering and desoldering for help: [How to Solder and Desolder Connections](#)

To reassemble your device, follow these instructions in reverse order.

