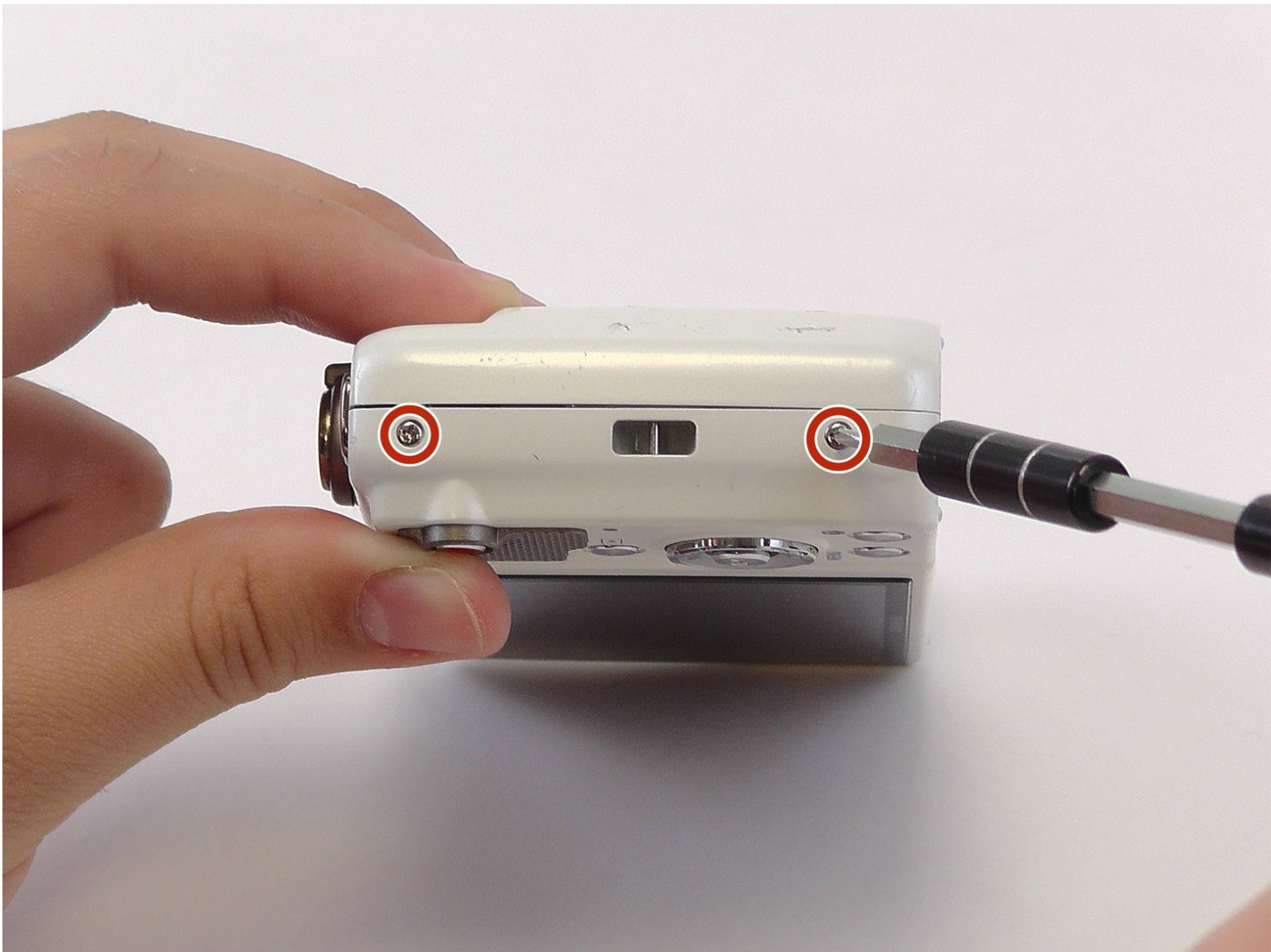




# Olympus VR-350 Front Plate Replacement

Replace a broken or damaged front plate.

Written By: Adri



---

## INTRODUCTION

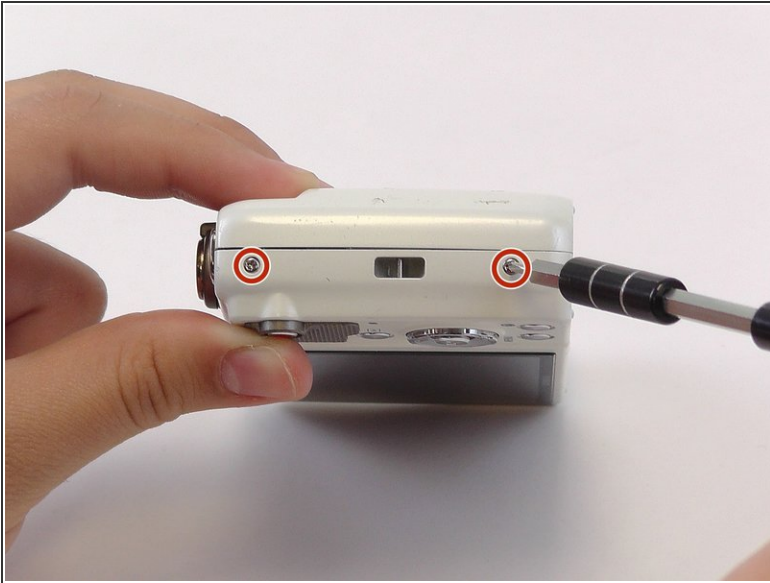
This guide will show you how to replace the front plate of your camera. This can help you personalize your camera, and it is also an important first step to any other repairs.

---

### TOOLS:

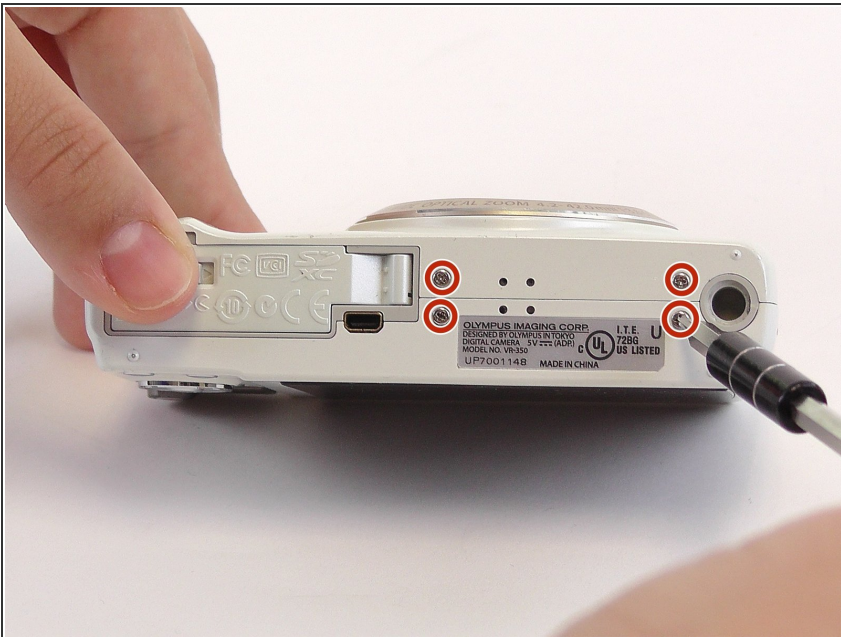
- [Phillips #000 Screwdriver](#) (1)
  - [iFixit Opening Tools](#) (1)
-

## Step 1 — Front Plate



- Remove the two 4mm screws from each side of the camera with a Phillips PH000 screwdriver.

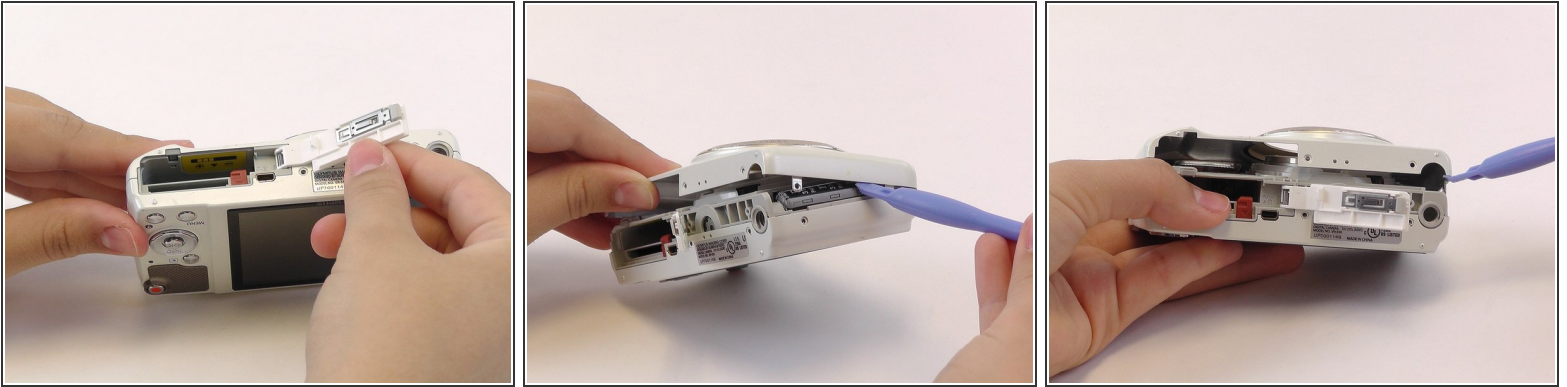
## Step 2



- Remove the four 4mm screws from the bottom of the camera with a Phillips PH000 screwdriver.



## Step 3



- Use the plastic opening tools and your fingers to pry the front plate from the camera.

**i** You might need to open the battery cover to remove the front plate.

To reassemble your device, follow these instructions in reverse order.

This document was last generated on 2019-07-16 04:53:59 PM.