



Hisense Sero 8 Speaker Replacement

This guide demonstrates how to replace the speaker.

Written By: Katharina



INTRODUCTION

After extended use, the speakers might lose sound quality and require replacement.

TOOLS:

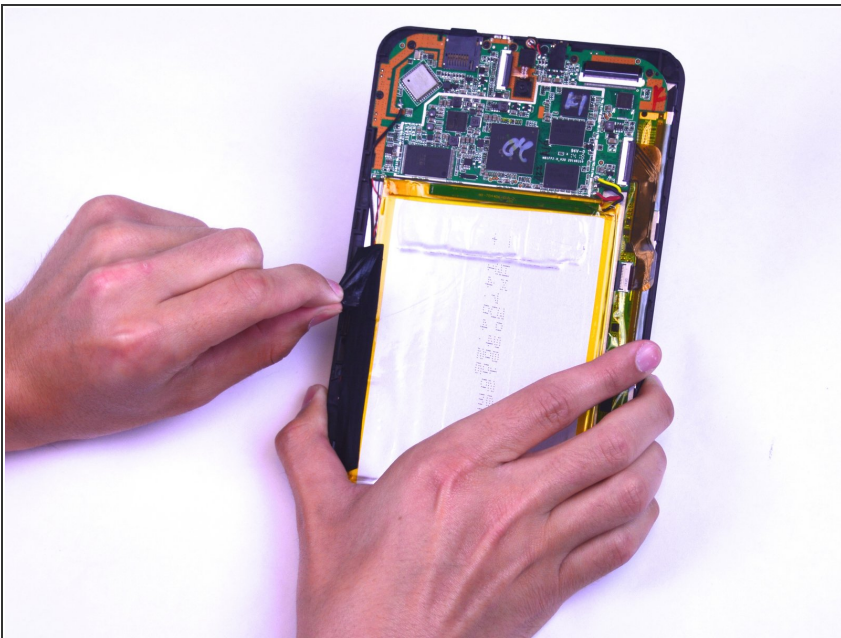
- [iFixit Opening Tools](#) (1)
 - [Soldering Iron](#) (1)
 - [Spudger](#) (1)
 - [Phillips #00 Screwdriver](#) (1)
-

Step 1 — Speaker



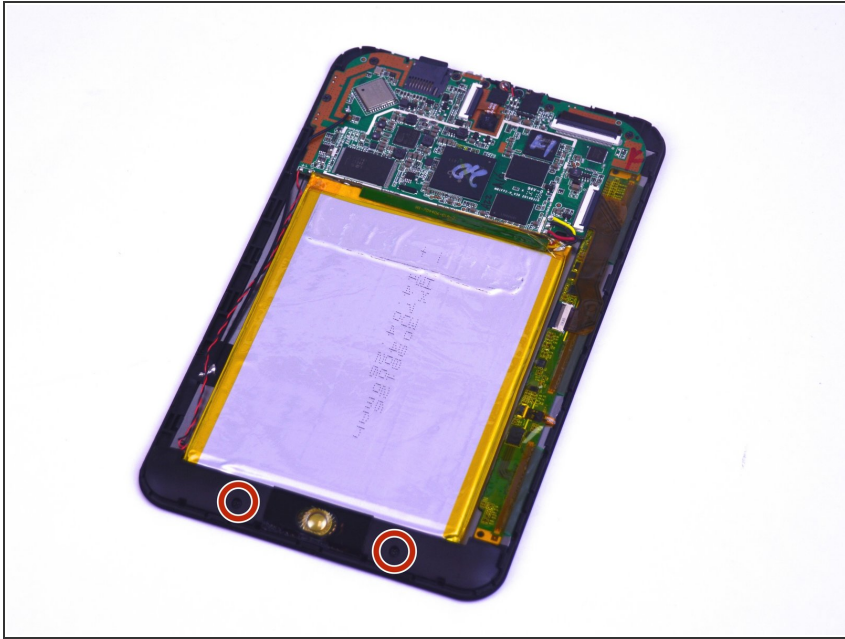
- Remove the back cover of the device using a combination of both plastic opening tools.
- Use your plastic opening tool to pry open a corner of the device. Continue using the tool down the side of the device to open it completely.

Step 2



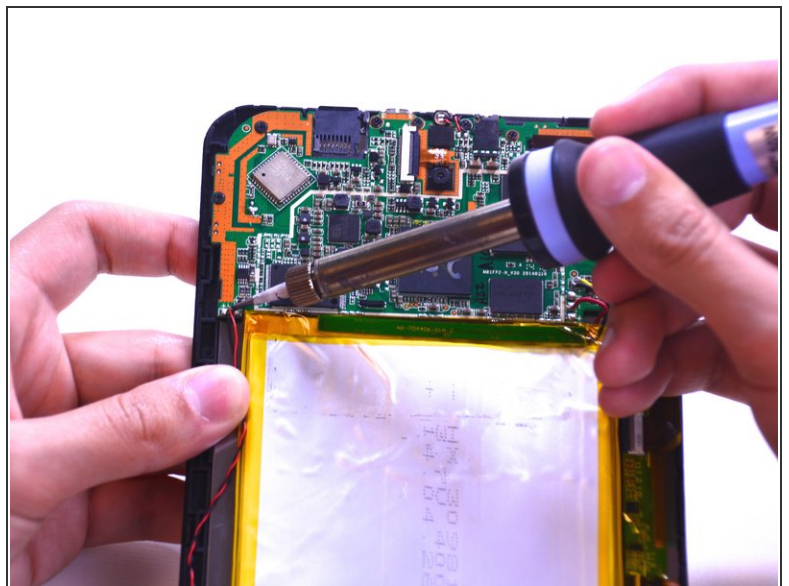
- Remove the black tape located to the left of the device.

Step 3



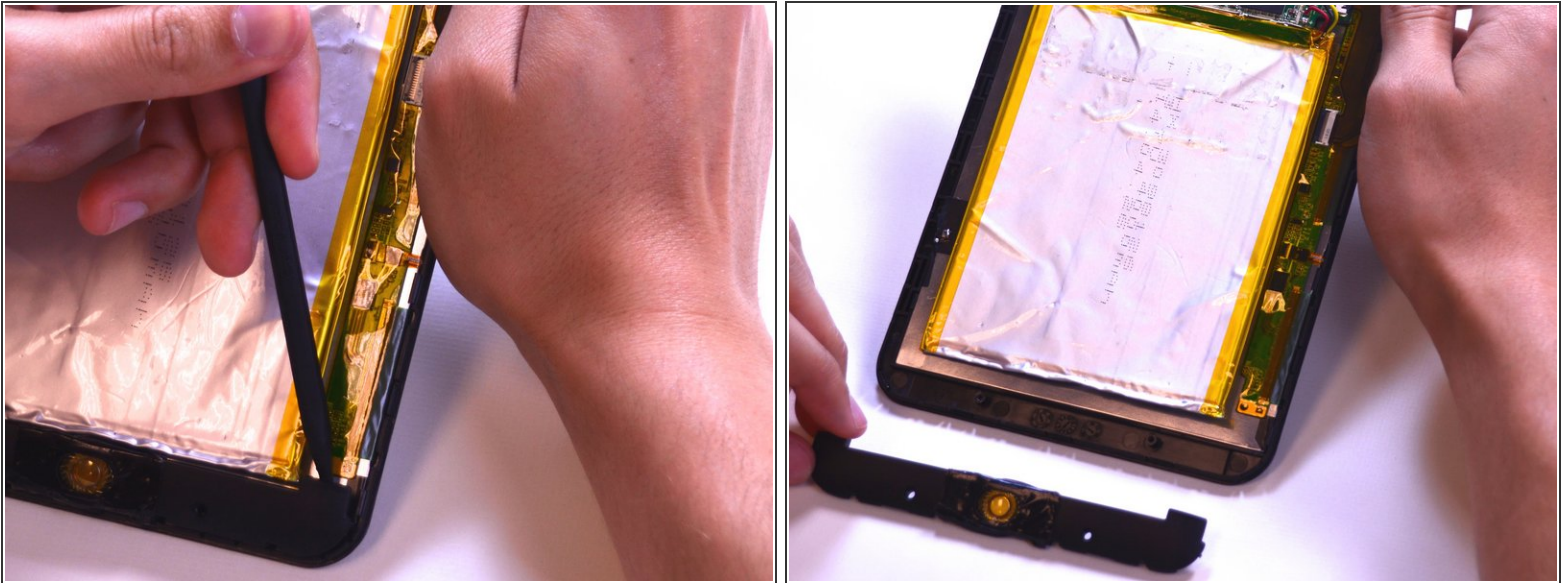
- Use a Phillips head #00 screwdriver to remove the two 4.43mm screws on the bottom that keep the speakers in place.

Step 4



- Unsolder the red and black wires connecting the speaker to the motherboard. Take a look at this [guide](#) to learn how to solder and unsolder connections.

Step 5



- Use the spudger tool to remove the speaker panel carefully.

To reassemble your device, follow these instructions in reverse order.

This document was last generated on 2019-07-20 09:30:58 AM.