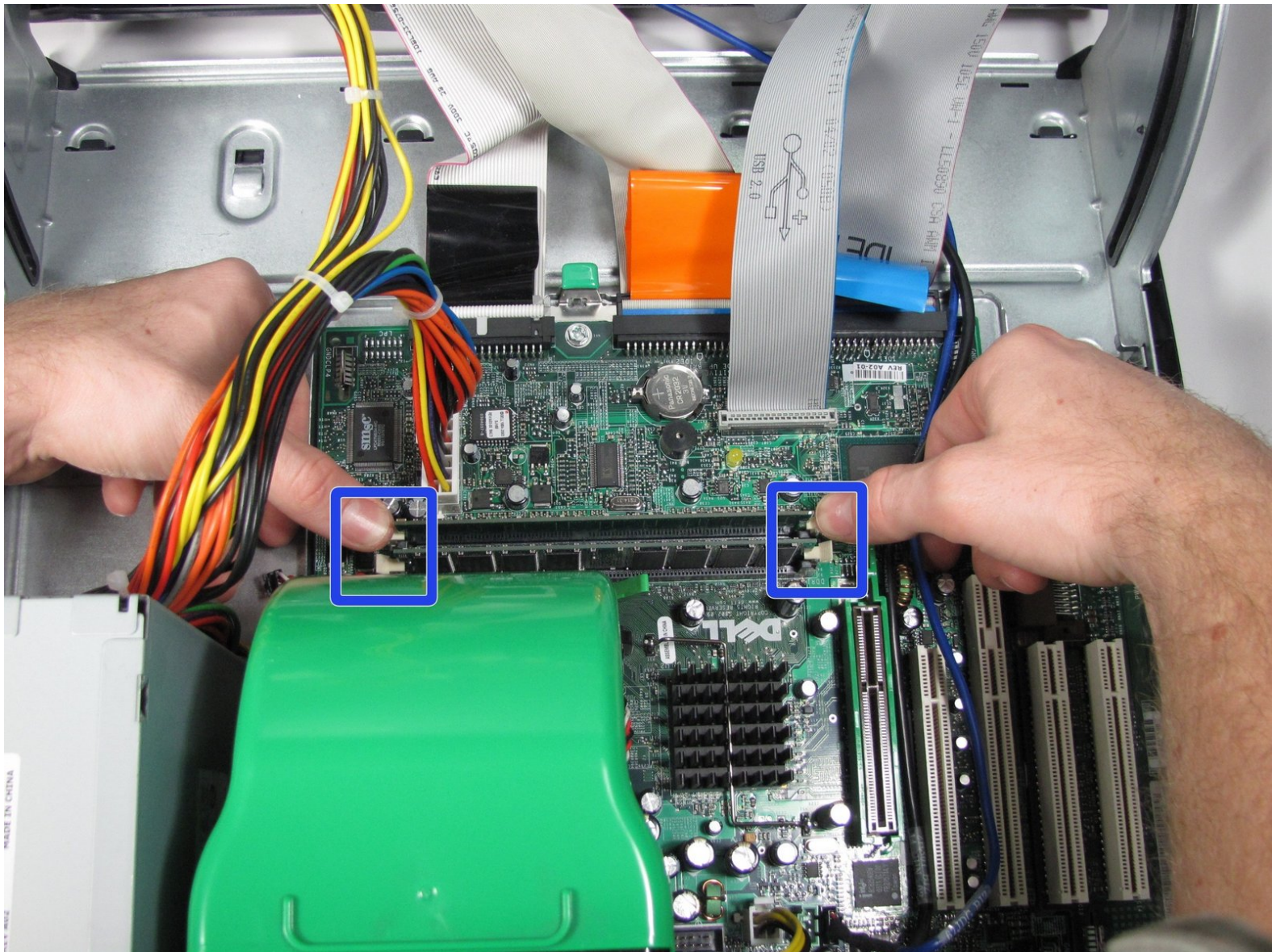




# Dell OptiPlex GX260 RAM Replacement

This guide will show you how to remove the RAM.

Written By: Kevin Schapansky



## INTRODUCTION

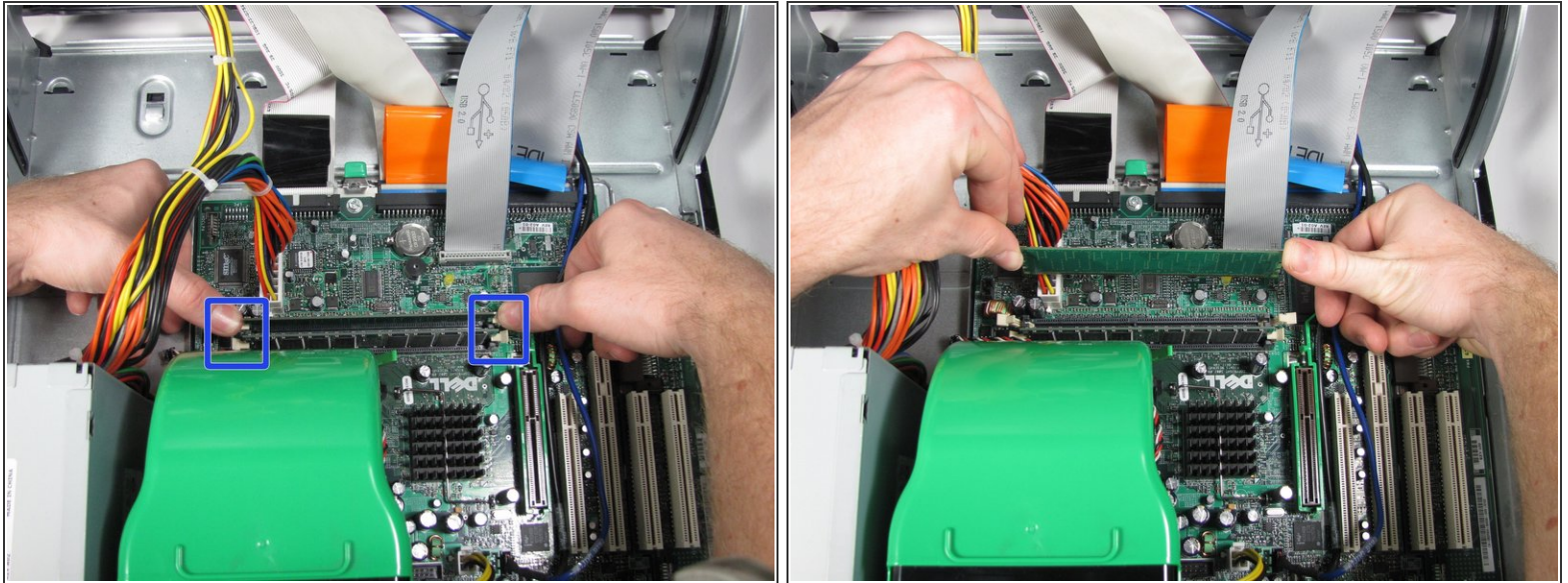
This computer can either use DDR 333 or DDR 400 memory, and can take up to 2GB of memory according to Dell

## Step 1 — Case



- Lay the Dell OptiPlex GX260 down on a clean flat surface with the rear towards you.
  - Push the oval shaped buttons located on the top and bottom of the PC simultaneously and lift the case straight up.
- i** Note: Some force may be required to push in the oval buttons open the PC case.

## Step 2 — RAM



- Push out on the cream colored tabs on each side of each RAM module until it pops up and out of its slot and remove the RAM.

To reassemble your device, follow these instructions in reverse order.