



Dell OptiPlex GX260 CPU Replacement

This guide will show you how to remove the CPU.

Written By: Kevin Schapansky

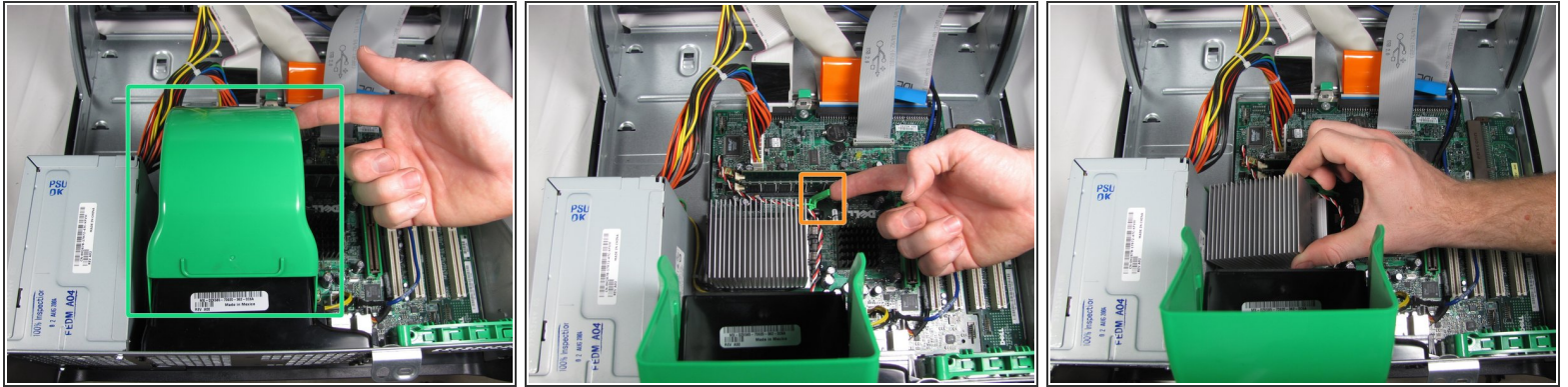


Step 1 — Case



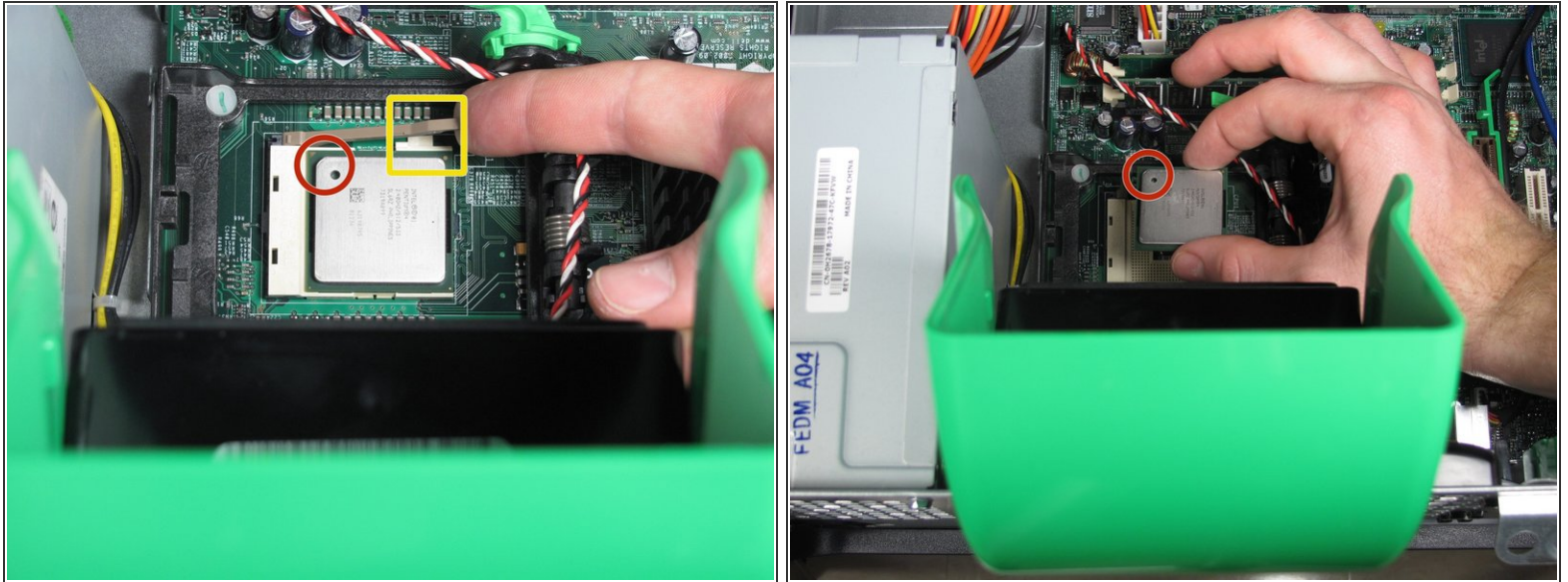
- Lay the Dell OptiPlex GX260 down on a clean flat surface with the rear towards you.
 - Push the oval shaped buttons located on the top and bottom of the PC simultaneously and lift the case straight up.
- i** Note: Some force may be required to push in the oval buttons open the PC case.

Step 2 — CPU




- Flip the green fan cover up towards you to reveal the CPU heatsink.
 - Lift the heat sink release lever
 - Remove the heat sink from the CPU and lift it out.
- ⚠ The heat sink may be adhered to the CPU by the the thermal pad or compound. If so gently twist the heat sink counter clockwise slightly and then pull the heat sink up and to the right.
- ⚠ Ensure you clean the heat sink and CPU thoroughly and apply fresh thermal compound before you reinstall the heat sink. Refer to this handy [iFixit Technique](#) if you need further information.

Step 3



- Carefully release the ZIF socket - push the lever backwards to release it from the hold down tab and lift it up and to the left until it stops (roughly 90 degrees).
- Gently lift the CPU straight up and out of the socket. There should be no resistance.
- The CPU will only fit into the ZIF socket in one orientation so take care when reinserting it. make sure that pin A1 is located correctly

 Take care not to bend the pins on the CPU

To reassemble your device, follow these instructions in reverse order.

This document was last generated on 2019-07-16 08:45:10 AM.