



Toshiba Satellite C55D-A5201 Battery Replacement

This guide teaches you how to remove the laptop battery. Reverse the steps to replace an old battery with a new one.

Written By: Andrea Colindres



INTRODUCTION

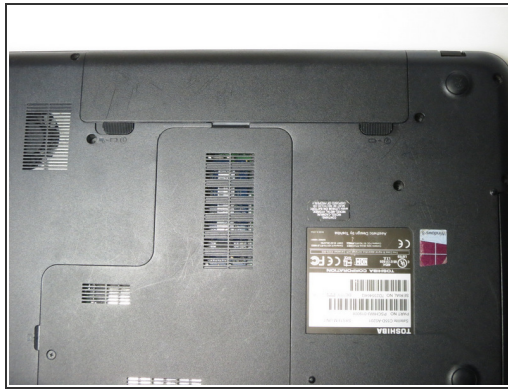
Is your battery no longer working and in need of a replacement? This guide will give you step by step instructions to switch out your battery for the Toshiba Satellite C55D-A5201.



PARTS:

- [Battery \(Part number PSCHWU-019008\)](#) (1)
-

Step 1 — Battery



- Close the laptop, and flip it upside down. You want the spine to be furthest away from you.

Step 2



- Release the locking mechanism by switching the left slider to the left.

Step 3



- Slide the right slider to the right, and simultaneously, pull the battery out at a diagonal angle.

To reassemble your device, follow these instructions in reverse order.

This document was last generated on 2017-07-05 02:20:06 PM.