



How to Change Broken Buttons on your Lexus Keyfob

Learn how to replace broken buttons on your Lexus keyfob.

Written By: Michael Tan



INTRODUCTION

Are your Lexus keyfob buttons not responding anymore? Use this guide to learn how to open the keyfob and swap out the buttons. The only tool you will need in this guide is your keyfob!



PARTS:

- [Lexus keyfob buttons](#) (1)
-

Step 1 — Broken Buttons



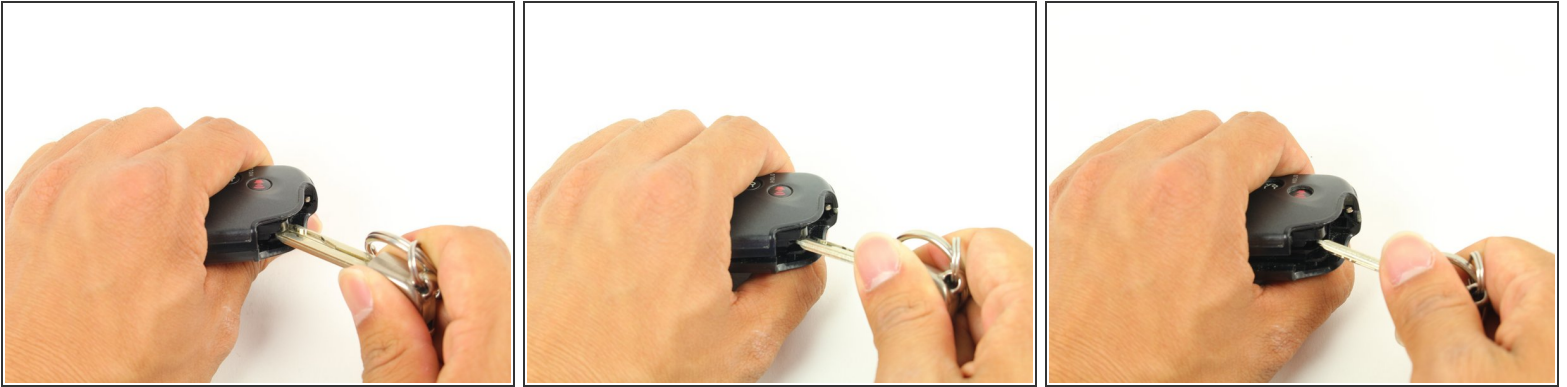
- Place the keyfob with the removable metal key facing towards you.

Step 2



- With the button side facing you, pull the metal latch down towards you to pull out the key.

Step 3



- With the exposed corner facing you, place the metal key into the slot.
- Turn the key sideways to open the keyfob.
- ⚠ You may feel like you're breaking the keyfob, but be firm while twisting.

Step 4



- Remove the internal remote to access the buttons.

Step 5



- Rotate the front plate, the broken buttons should fall out with ease.
- Replace the broken buttons as necessary.

To reassemble your device, follow these instructions in reverse order. Apply firm pressure when snapping the front and back covers together.