



Skil 88 Trigger Housing Replacement

Both the power supply and the trigger mechanism are found in the trigger housing.

Written By: Matt



INTRODUCTION

If you need to replace your power supply or trigger mechanism, you will have to open up the trigger housing.

TOOLS:

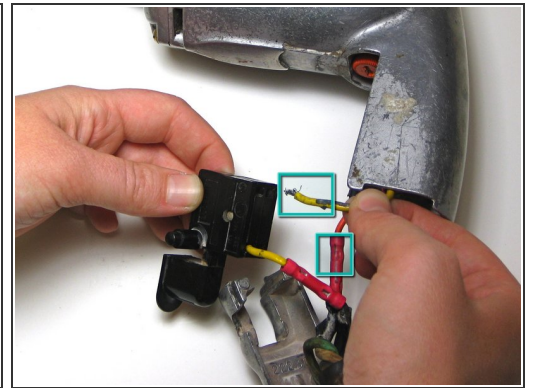
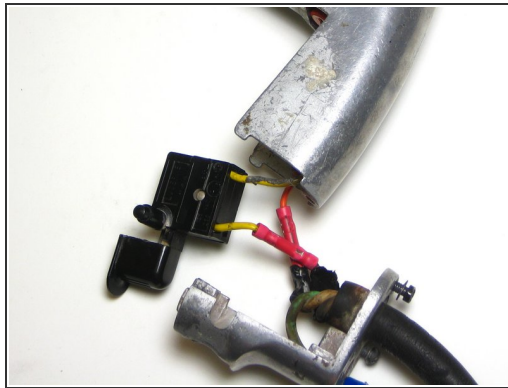
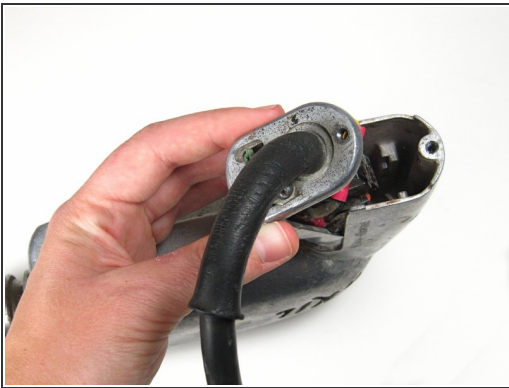
- [.25" Socket Wrench](#) (1)
-

Step 1 — Trigger Housing



- Use the socket wrench to remove the 0.5" length screw from the bottom of the handle.

Step 2



- Separate the cord from the handle.

To reassemble your device, follow these instructions in reverse order.