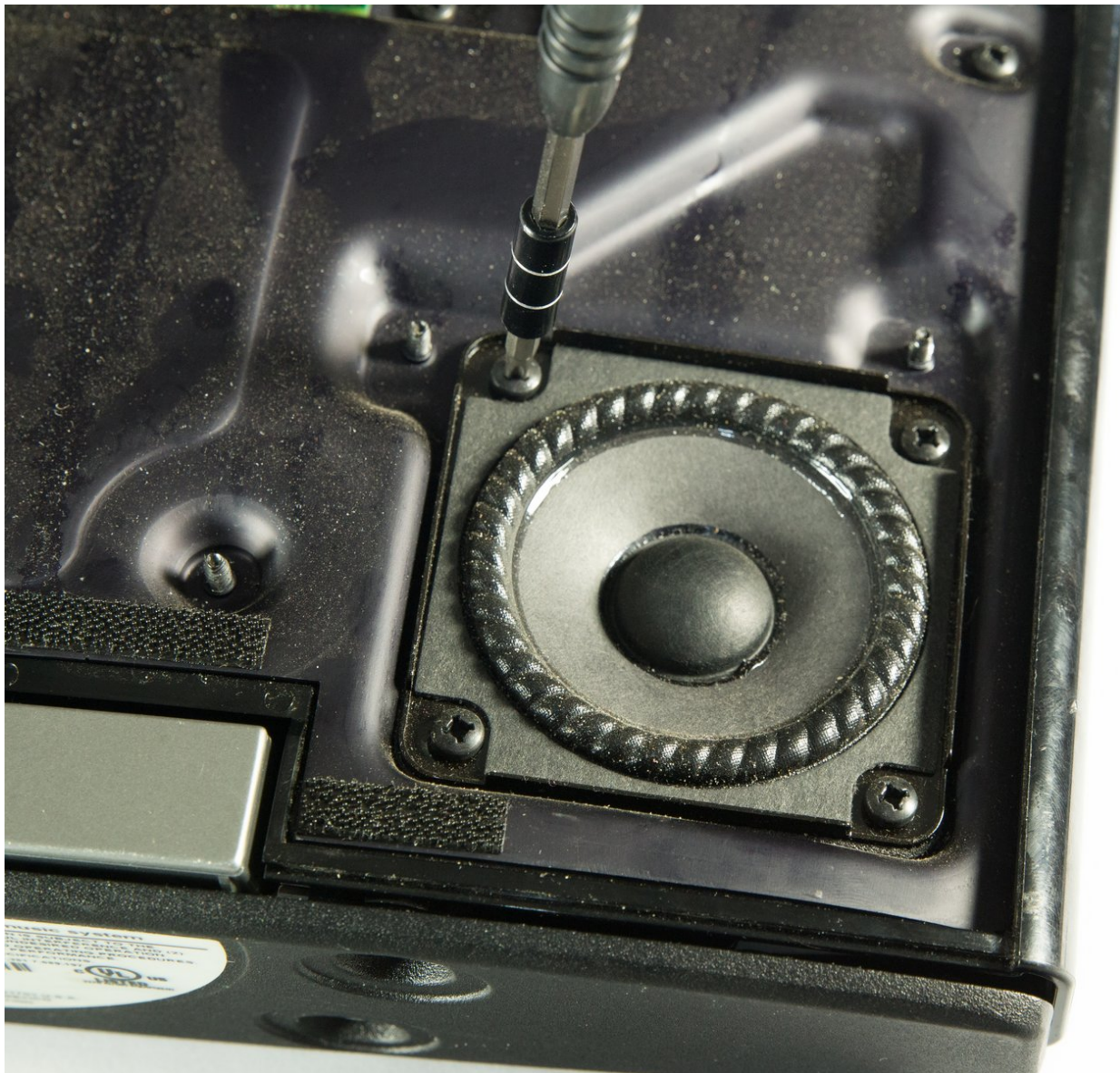




Bose SoundDock Portable v2 Speaker Replacement

If the speakers are not working follow these instructions for clean crisp sound. You will have to already have the speaker purchased to do this replacement.

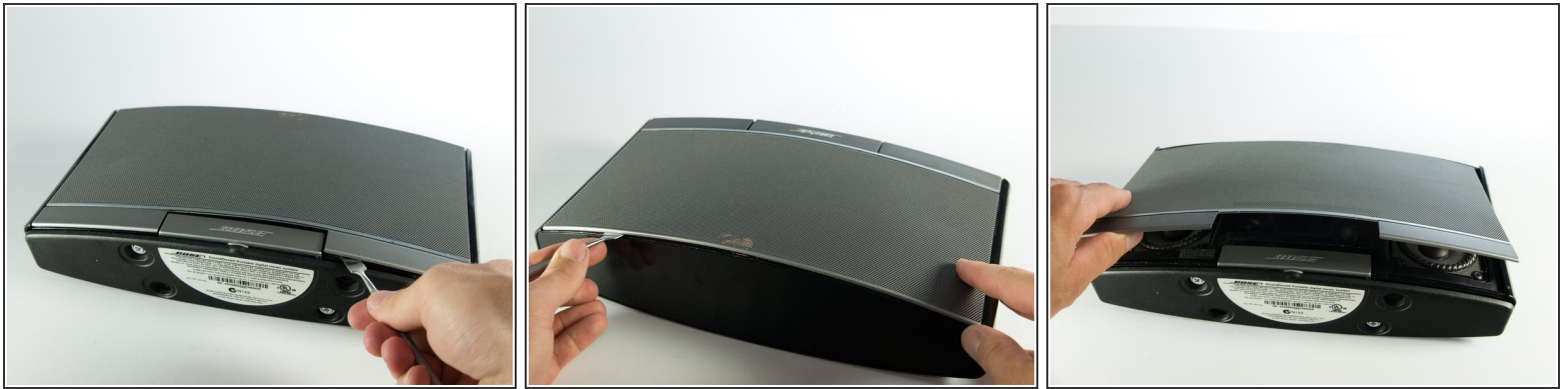
Written By: Evan Low



 **TOOLS:**

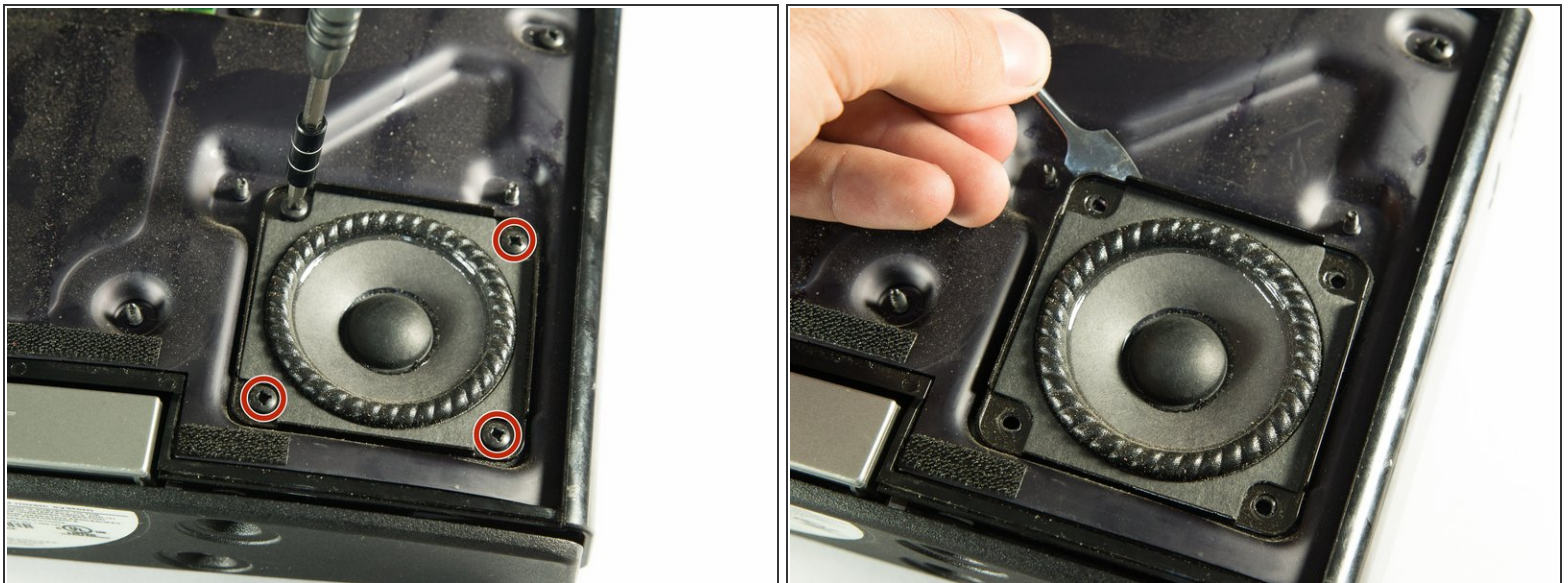
- Phillips #2 Screwdriver (1)
 - Metal Spudger (1)
-

Step 1 — Speaker



- Gently pry the front mesh cover off of the SoundDock using a metal spudger.
- ⓘ The mesh is held on by small velcro strips so if you hear a tearing sound it is just the velcro coming apart

Step 2



- Remove the four 16mm #2 screws holding the speaker to the base using a #2 screwdriver
- Gently lift the speaker from the base.
- ⚠ Do not lift the speaker to far out of the base, you may damage the wires.

Step 3



- Carefully slide the wires off of the pins on the speaker.
- ⚠ Do not unwrap the wire of the pin, the wire will break and you won't be able to attach it to the new speaker.

To reassemble your device, follow these instructions in reverse order.