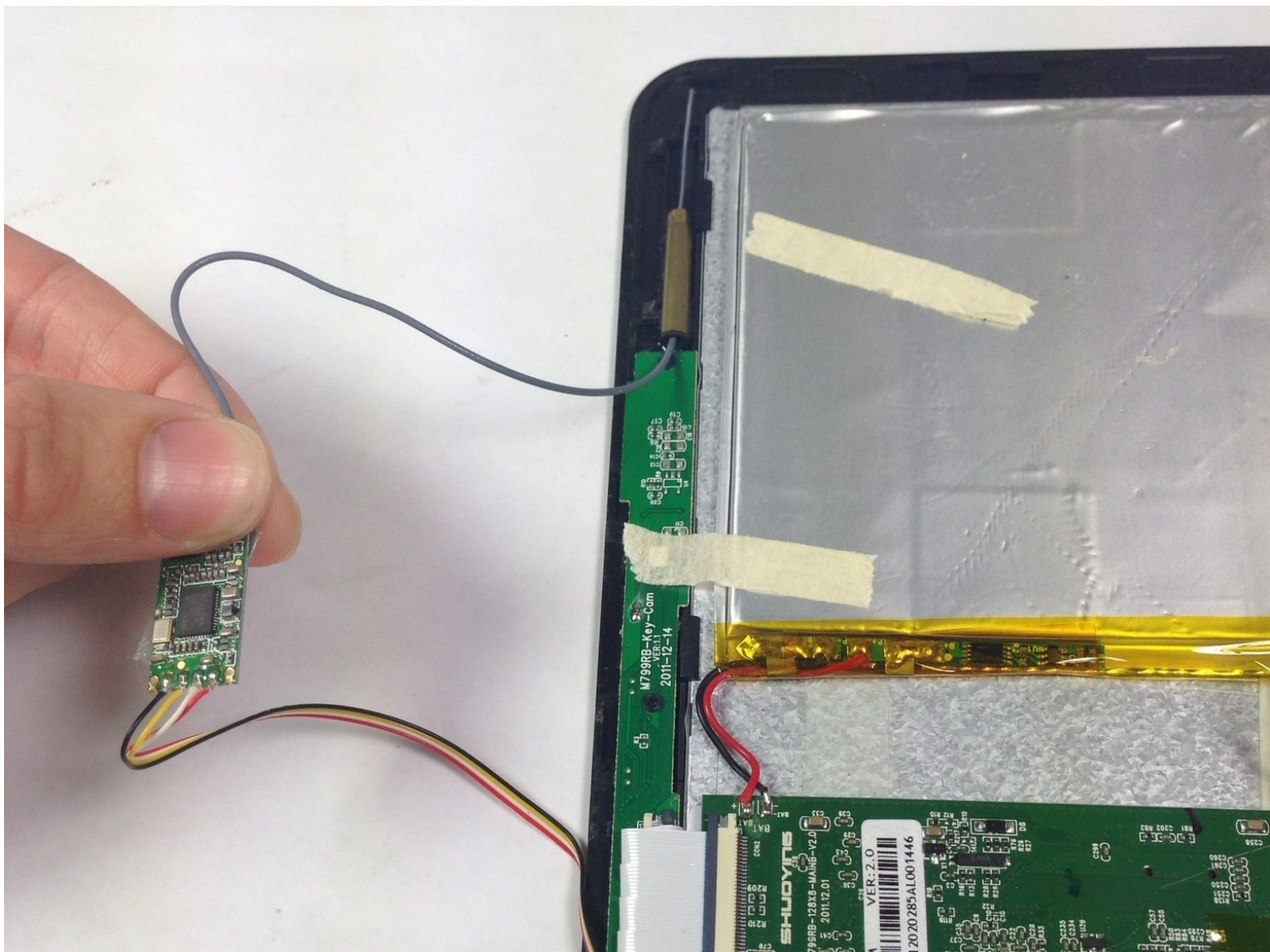




Ematic eGlide 4 Wi-Fi Adaptor Replacement

This guide will show you how to remove and replace a broken/worn-out Wi-Fi adaptor in the Ematic eGlide 4.

Written By: Bailey Hughes



INTRODUCTION

The Wi-Fi adaptor is a small antenna inside the tablet that allows the device to connect to wireless internet. The adaptor features its own circuit board, which will be necessary to exchange the part. The circuit board will be desoldered from the motherboard and the antenna will be removed from the front case.

TOOLS:

- [Phillips #00 Screwdriver](#) (1)
 - [Soldering Iron](#) (1)
-

Step 1 — Rear Panel



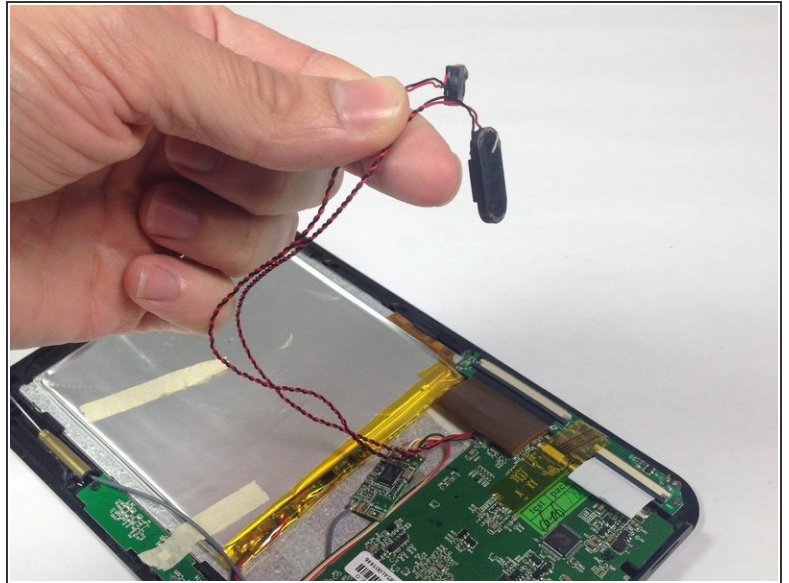
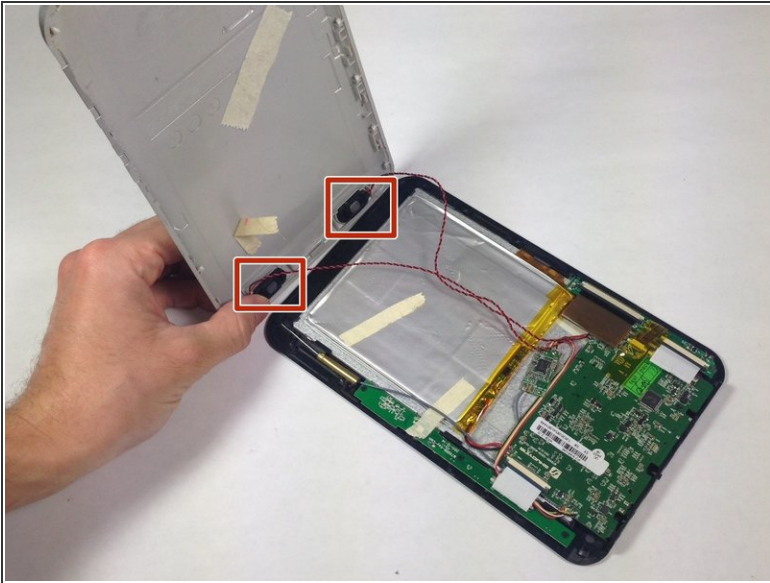
- Remove the 4.6mm Phillips #00 screw at the base of the device.

Step 2



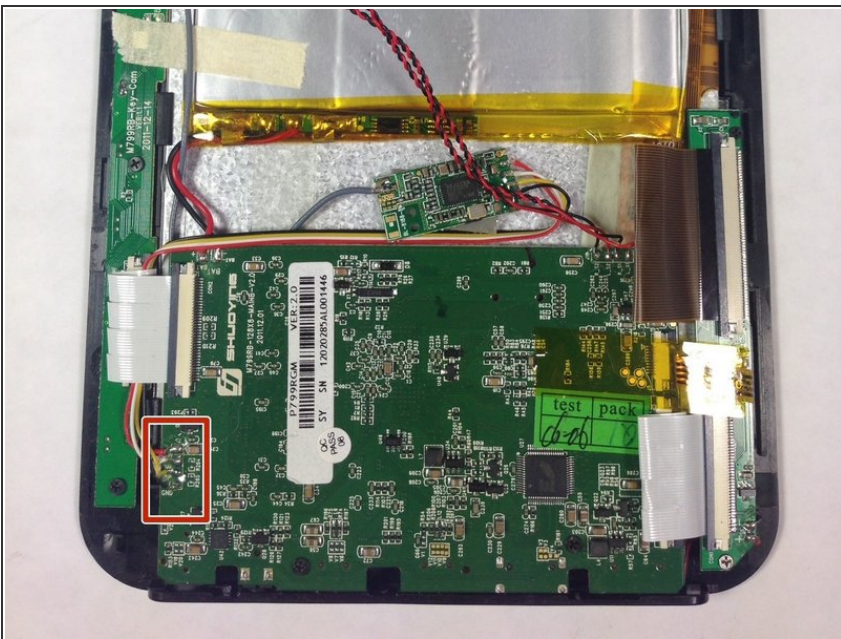
- Slide the rear panel away from the base parallel to the screen.

Step 3



- Carefully remove the speakers from the rear panel.
- Pull the speakers off of the rear panel.

Step 4 — Wi-Fi Adaptor



- Desolder the Wi-Fi Adaptor
- ⓘ See ifixit's guide to soldering and desoldering for help: [How to Solder and Desolder Connections](#)

Step 5



- Gently pry the antenna out of the front case

To reassemble your device, follow these instructions in reverse order.