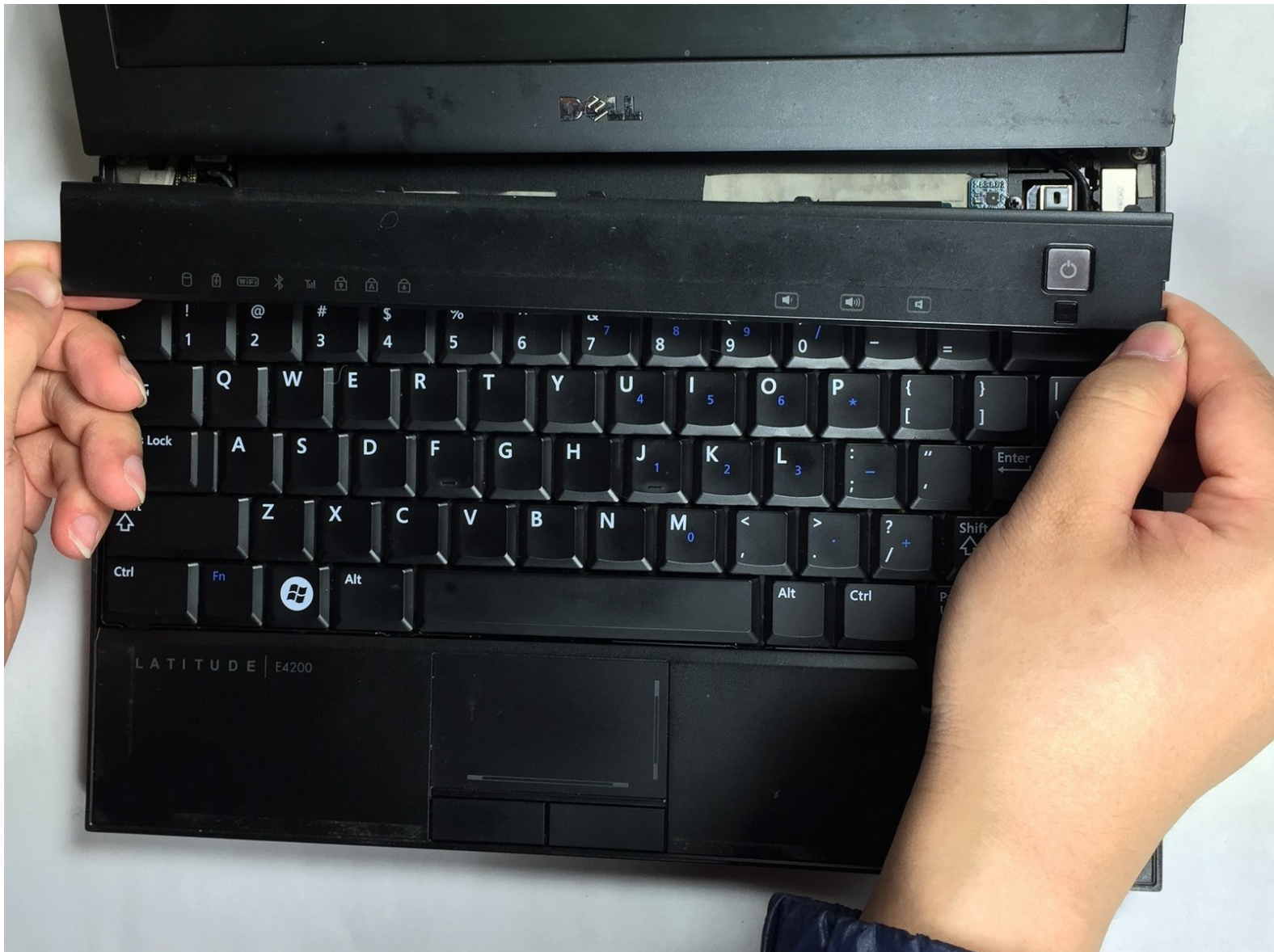




Dell Latitude E4200 Power Button Panel Replacement

This guide will explain how to remove the front panel of the computer.

Written By: John Shellenberger



INTRODUCTION

Follow the guide steps in order to remove the computers front panel successfully. It is essential for removing the keyboard and accessing other components located on the front of the main board.

TOOLS:

- [Flathead Screwdriver](#) (1)
-

Step 1 — Power Button Panel



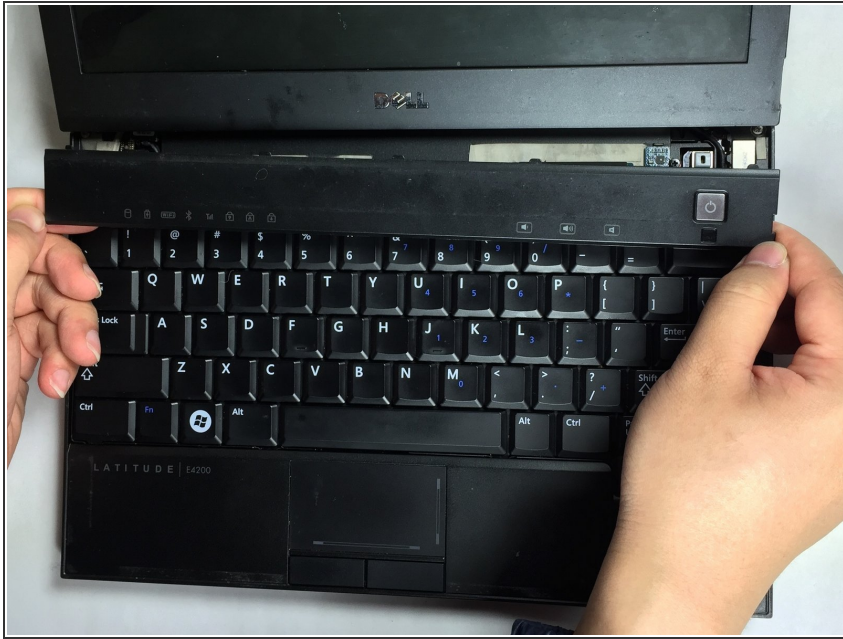
- Open computer.

Step 2



- Slide any tool with a flat surface under the side bottom right corner of front panel and pry the front panel out of place.
- ⓘ A small flat head screwdriver would be an ideal tool to use during this step.

Step 3



- Once out of place, position your thumbs under the bottom of the panel and pull upwards.

To reassemble your device, follow these instructions in reverse order.

This document was last generated on 2019-07-08 05:00:58 PM.