



Samsung WB150F Battery Replacement

This guide will provide steps on how to replace the battery in a Samsung WB150F.

Written By: Joshua Paul Leite



INTRODUCTION

Sometimes the battery is dead or needs to be replaced with a new one. Follow the steps below to answer any questions you may have about replacing the battery.

Step 1 — Battery



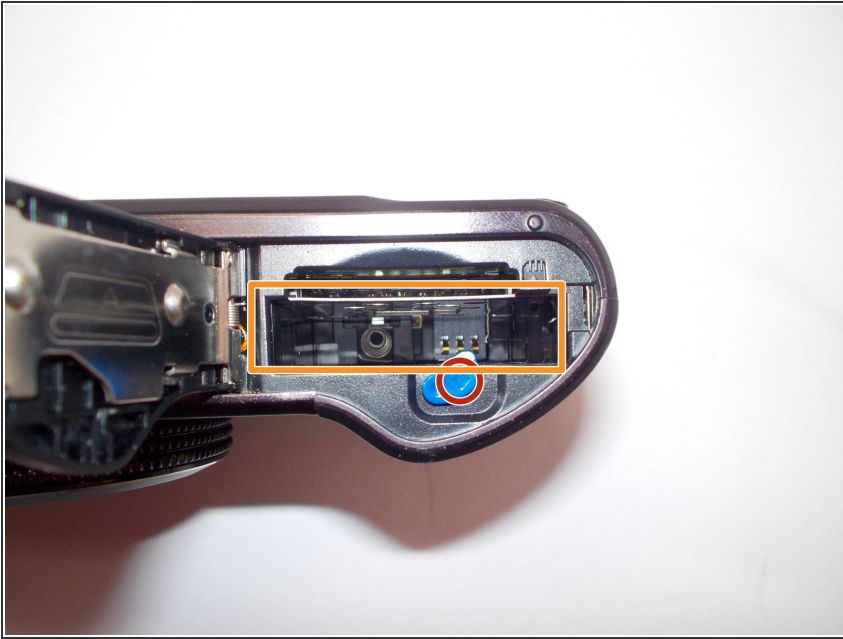
- The location of the battery compartment can be found on the underside of the camera.

Step 2



- Have the lens of the camera face you. To open the battery compartment, slide the battery door lock towards the left. At the same time allow the battery door to swing open.

Step 3



- Depress the battery's retaining clip and remove the existing battery.
- While holding the battery lock open, place the new battery in the battery slot.
- Once the battery is in the compartment, insure the battery lock is holding the battery in place. Close the battery compartment door.

To reassemble your device, follow these instructions in reverse order.