



Disassembling IBM ThinkPad A30 Floppy Disk Drive

This guide will show you how to remove the Floppy Disk Drive.

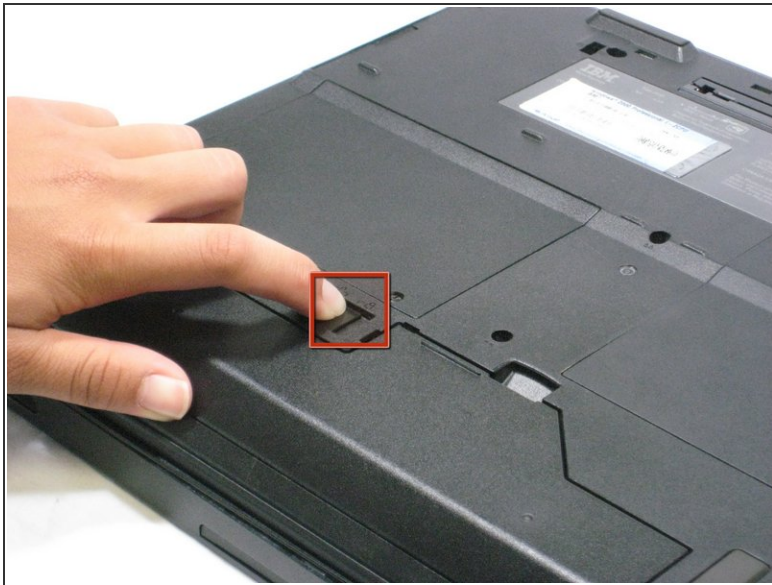
Written By: Jessica



INTRODUCTION

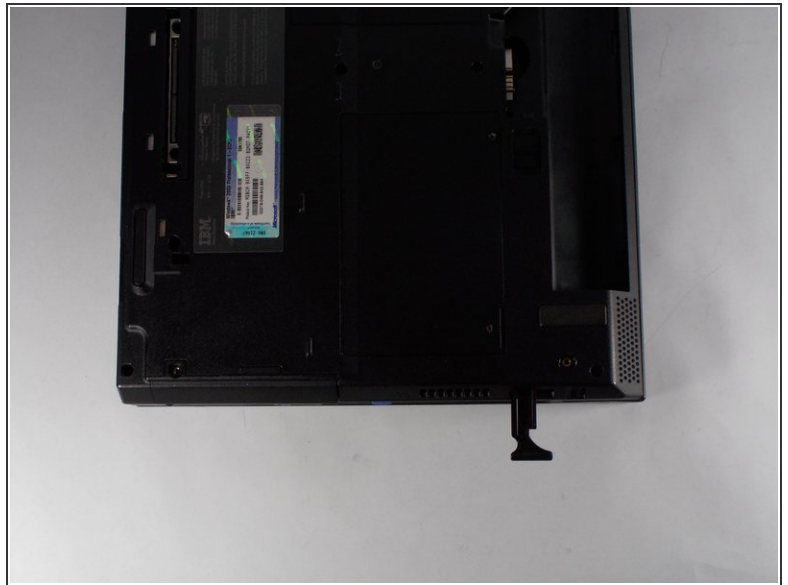
To take the floppy disk drive out, remove the battery first.

Step 1 — Battery



- ① Flip the ThinkPad over so that it is upside down.
- Slide the highlighted tab to the left.
- With your finger on the tab, remove the battery by lifting it upwards away from the laptop.

Step 2 — Floppy Disk Drive



- i** Hold the Thinkpad as the picture shows.
- There is a switch located just above and to the right of the drive.
 - Slide the switch to the right. A small, black tab will pop out.

Step 3



- Pull the small black tab away from the computer to access the drive.
- Gently pull the drive out from the laptop.
- If there is a problem with your tab, whether it doesn't pop out or it doesn't expose the floppy drive, please check the corresponding entry in the troubleshooting page.

To reassemble, place the floppy disk drive back into its bay the way it was facing before

This document was last generated on 2019-08-10 05:32:10 AM.