



Coby Kyros MID9042 Camera Replacement

Replace the camera of your Coby Kyros MID9042 tablet.

Written By: Samantha Rollings



INTRODUCTION

Use this guide to replace the camera of the Coby Kyros MID9042 tablet.

TOOLS:

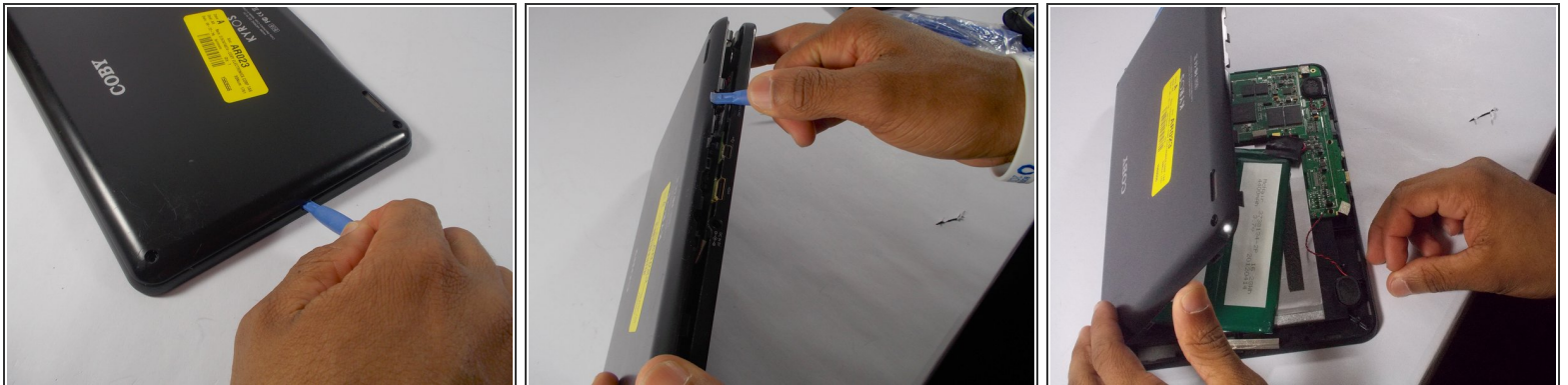
- [Phillips #0 Screwdriver](#) (1)
 - [iFixit Opening Tools](#) (1)
 - [Tweezers](#) (1)
-

Step 1 — Camera



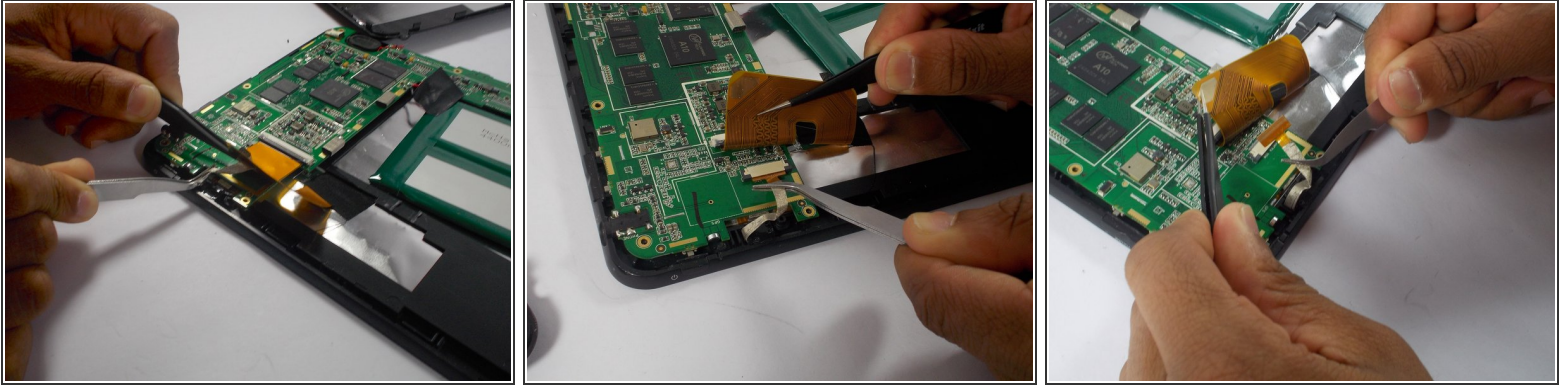
- i** Before taking apart the tablet, power off the device.
- Remove the anti-slip pads from all 4 corners of the back of the device.
 - Remove the four 3.2 mm Phillips #0 screws from the back cover.

Step 2




- !** Be careful not to break the inner plastic tabs while pulling the back cover off.
- Use the blue plastic opening tool to wedge the back cover apart from the front.
 - Once the edges are wedged apart, use hands to lift up the back of the tablet.

Step 3



- Locate the gold flap and use tweezers to lift the flap up.
- Use a second pair of tweezers to pull the gold tab connected to the camera out of the circuit board.
- Once the tab is removed from the circuit board, pull the camera out of the tablet.

 Be sure to avoid pulling the gold flap off the the circuit board.

To reassemble your device, follow these instructions in reverse order.