



Ryobi P202 Right Side Case Replacement

Replacement of the right side case of the Ryobi P202 cordless drill.

Written By: Joseph Eckstein



INTRODUCTION


This guide covers the removal process of the outer case. The process does not require removing any of the internal electronics; however it is recommended that the battery is removed in order to reduce the risk of shock. The screws in the case are standard Torx T10 screws. It is advisable to have some place safe to keep all of the screws so that the case can be properly secured during reassembly.

TOOLS:

- [T10 Torx Screwdriver](#) (1)

Step 1 — Battery



 The battery can shock you. Only touch plastic, non-conductive components.

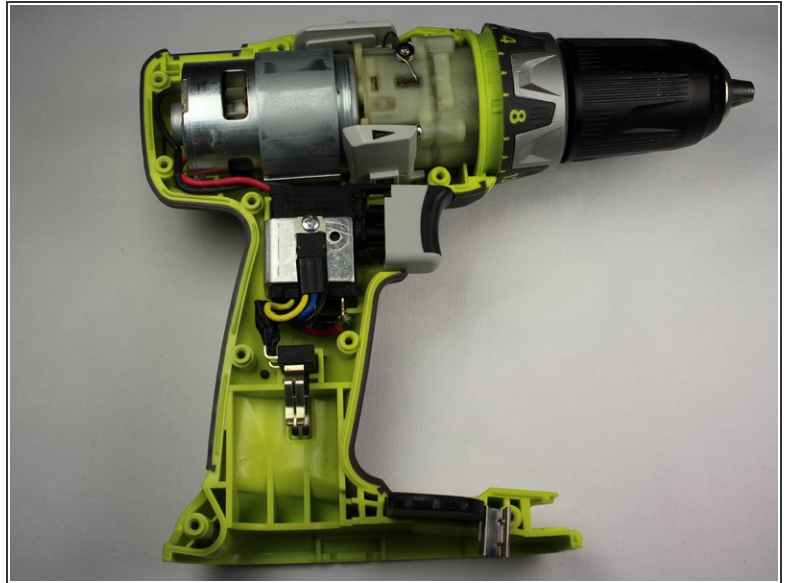
- Detach the battery unit from the drill body by pressing the battery release buttons on both sides of the unit and pulling outwards.

Step 2 — Right Side Case



- Use a Torx T10 screw driver to unscrew all ten 13.5 mm screws from the drill casing to gain access to the interior.

Step 3



- Gently lift the casing from the drill body.
 - Take the casing completely off the drill body to gain access to the interior of the drill.
- i** The Ryobi P202 casing has Part #: 200690001

To reassemble your device, follow these instructions in reverse order.

This document was last generated on 2019-07-29 05:58:18 PM.