



Dell Latitude E4200 Battery Replacement

This guide will show the steps necessary to get to the battery on your Dell Latitude E4200.

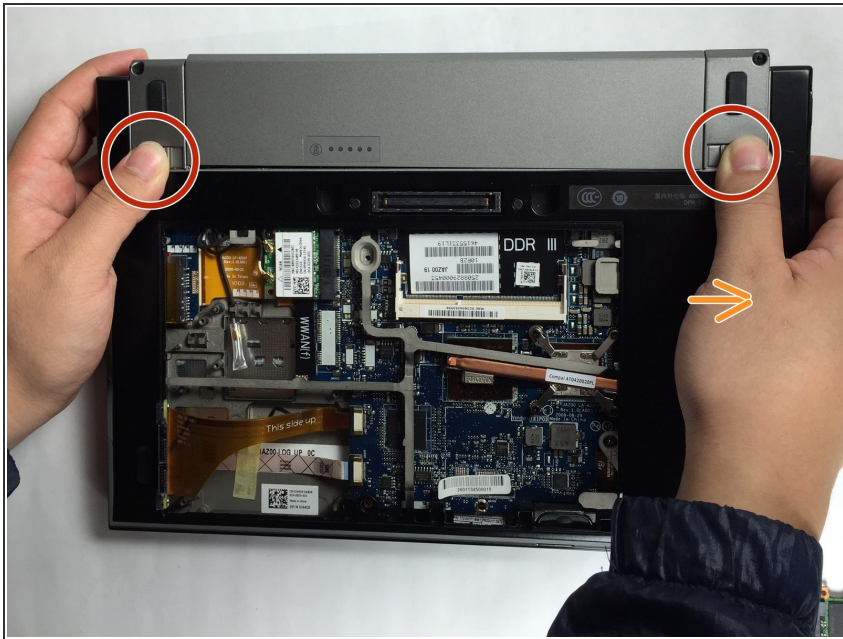
Written By: theamunchsoegaard



INTRODUCTION

Follow these steps in order to successfully remove the battery. Please note that it is **not** necessary to remove the back panel to replace the battery.

Step 1 — Battery



- Push each slide towards the edge of the device. This will cause the battery to release.

Step 2



- Remove the battery from the device.

To reassemble your device, follow these instructions in reverse order.