



Dualshock 2 Teardown

Written By: zachary



TOOLS:

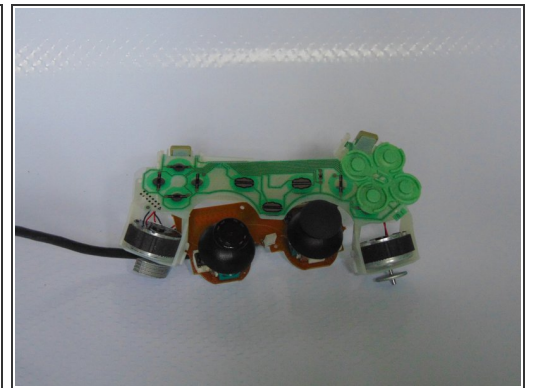
- [Essential Electronics Toolkit \(1\)](#)
-

Step 1 — Removing the Screws



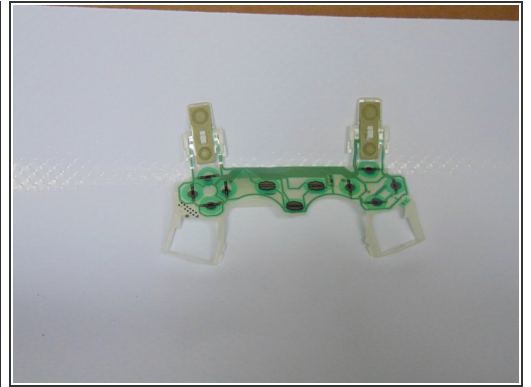
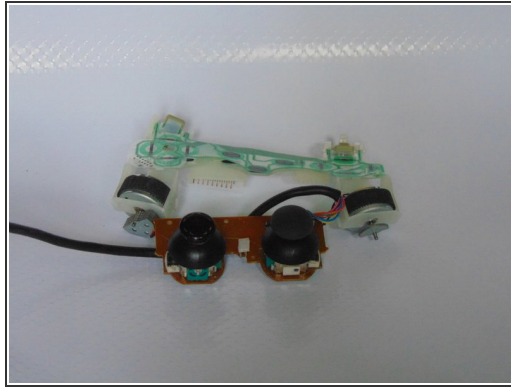
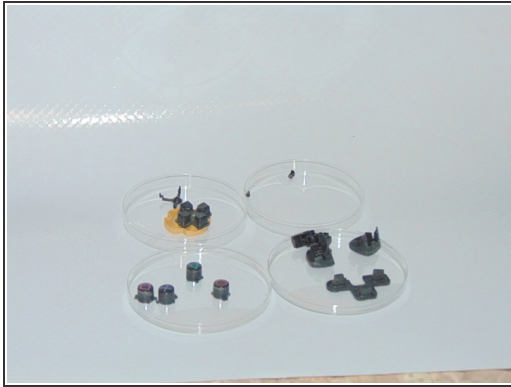
- On the back of the controller there is screw holes
- Using a Philip Screw driver remove the screws

Step 2 — Separating the controller pieces



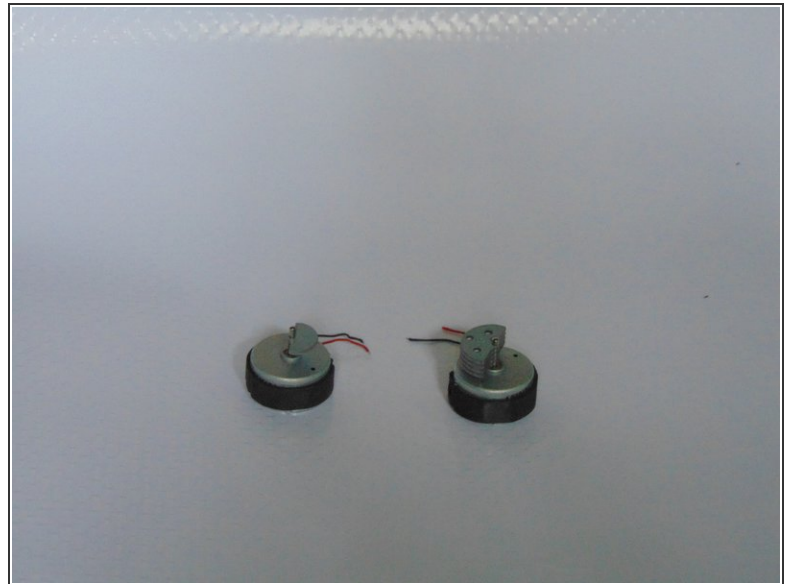
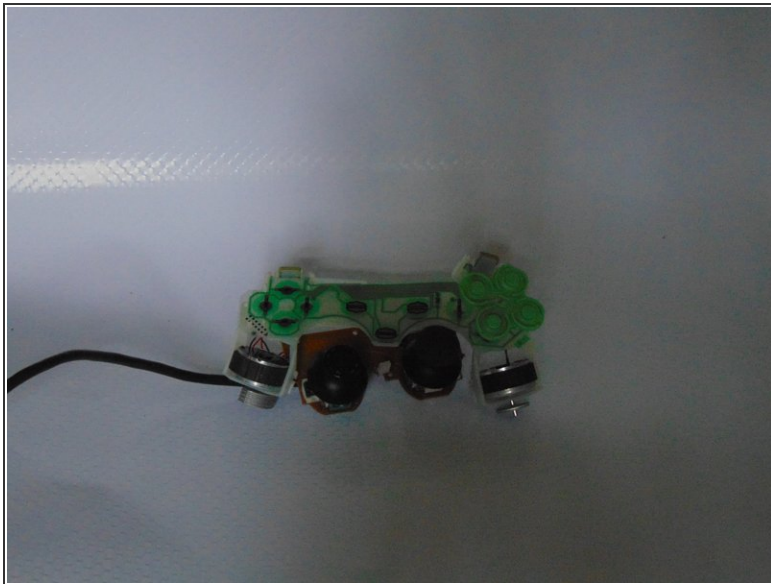
- Using a pry tool separate the two controller pieces

Step 3 — All the buttons



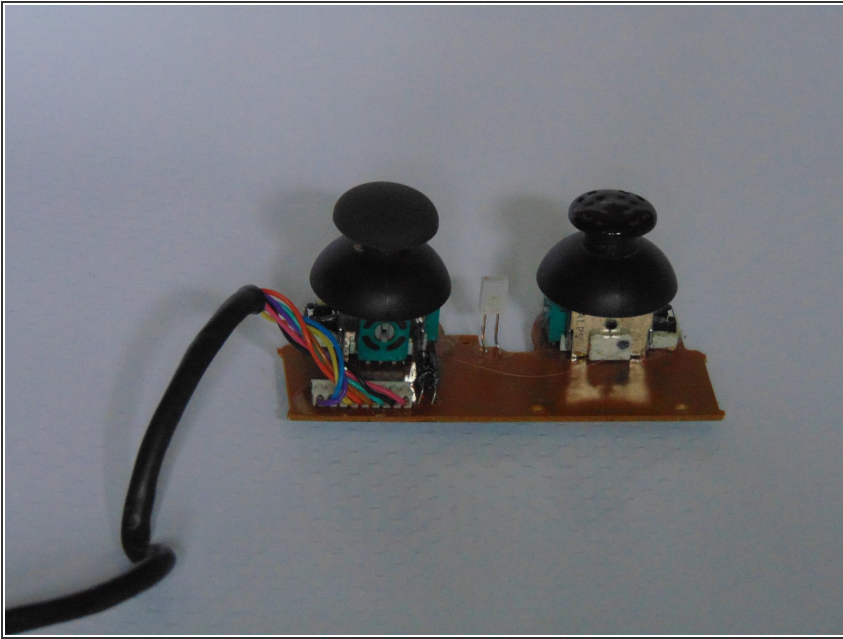
- First remove the buttons
- Most of my buttons fell off. Then left up on the sensor and set it aside.

Step 4 — DualShock support



- When I lifted the controller out of the chassis one of the dual shock motors fell off it soldering. I removed the other one.

Step 5



- What you are left with