



Access HD Digital Converter Teardown

Teardown of a digital converter box from Access HD.

Written By: Zenitar



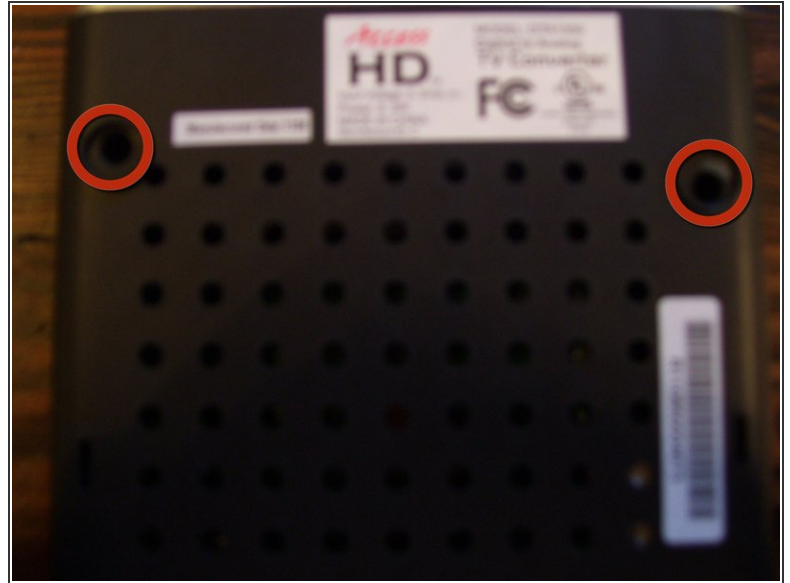
INTRODUCTION

I teardown a common DTV converter to see whats in it and debunk the "camera" nonsense. This little box has 16MB of RAM and an unknown speed CPU. Well, lets find out!

TOOLS:

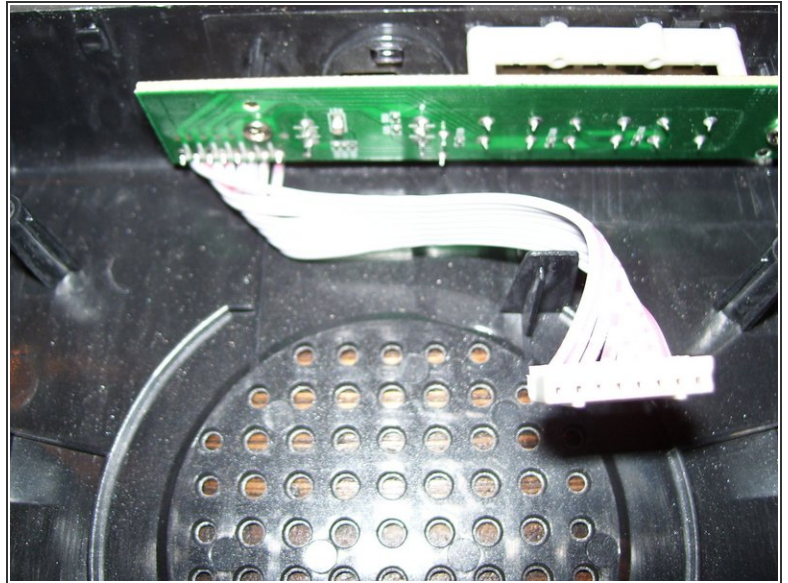
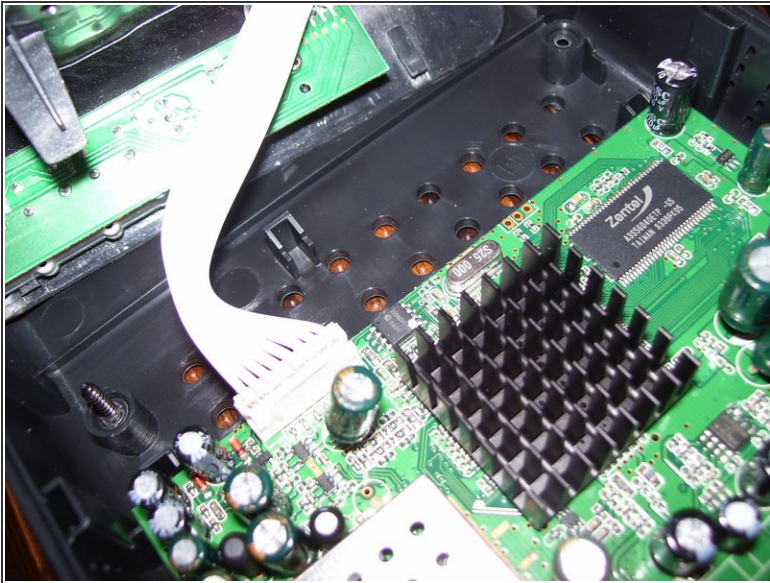
- [Phillips #1 Screwdriver](#) (1)
-

Step 1 — Access HD Digital Converter Teardown



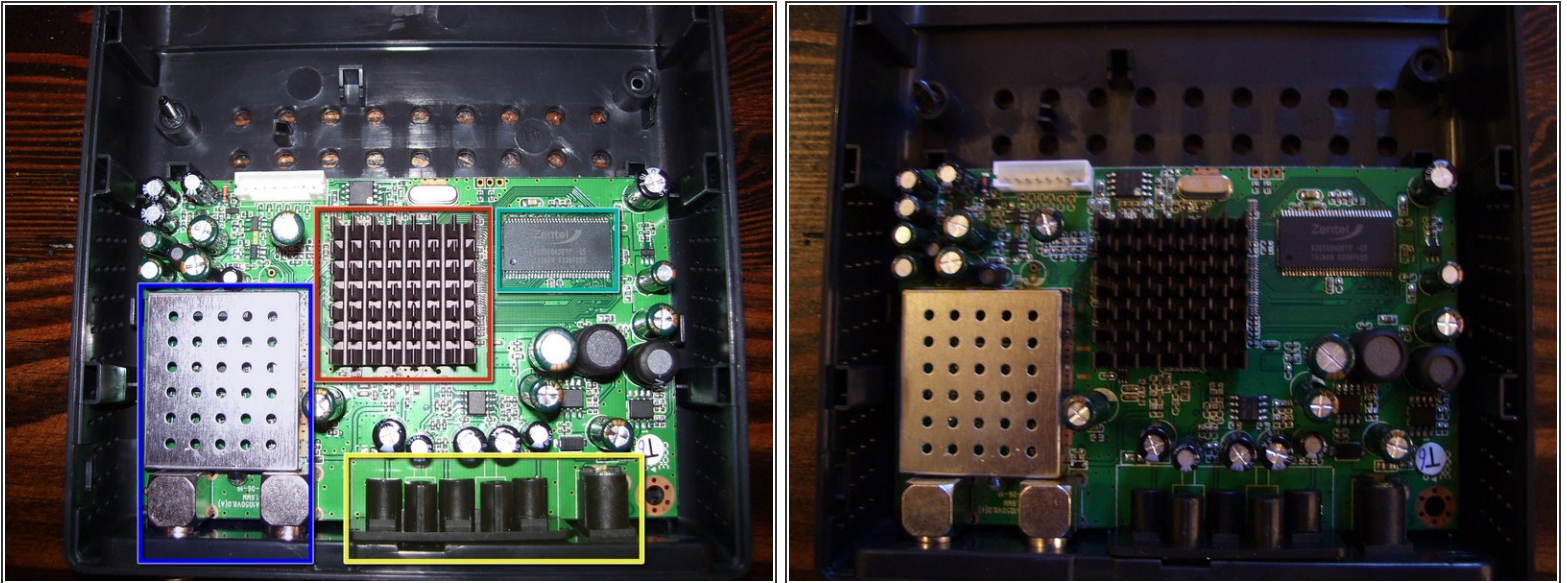
- Ah, the tiny little box. Reminds me in size of the new Apple TV. Yay for cheapo silver paint. What do you expect for 20 dollars?
- To open it, you must remove 3 screws. 1 on the back, and 2 on the bottom behind rubber stickies.
- There is also 1 clip you must undo on the back, it's visible.
- The device takes OTA digital signals and converts it into analogue 480p. Ironic that it's called Access "HD". Composite or coaxial are your choices here.

Step 2



- Once the cover comes off, you must disconnect the front button cable.
- The front button board does not have much on it. Buttons, 2 color LED and an IR receiver.

Step 3



- The Motherboard only takes up 2/3 of the case. The rest is empty plastic!
- Unknown CPU with a clock of 100mhz and 16mb of on board RAM. Contains a composite video encoder and some kind of simple video controller capable of 480p resolution.
- 4mb Flash DRAM which contains an unknown simple menu driven OS. No advanced features whatsoever.
- Composite video output, Power in jack
- RF Transceivers
- Not much to this little device. It works well at picking up free over the air television. It tends to run hot, so the CPU must not be well designed for such a simple task as decoding MPEG4 streams.

To reassemble your device, follow these instructions in reverse order.