



# Samsung Galaxy S Blaze Frame Replacement

Prerequisite Only

Written By: Daniell Gianelloni



---

## INTRODUCTION

The frame replacement is the next major component that will be required to be removed.

---

### TOOLS:

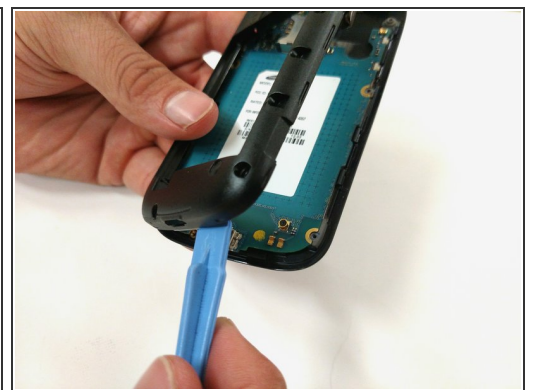
- [Phillips #00 Screwdriver](#) (1)
  - [iFixit Opening Tools](#) (1)
-

## Step 1 — Frame



- Use a Phillips head screwdriver size 00.
  - Remove the 4mm screws from the frame. The screws can be removed in any order.
- i** The eight screws are all the same size.

## Step 2



- Use the blue plastic opening tool to remove the frame from the device.
  - Work around the device with the opening tool until the frame is completely off the device.
- i** You may need to use some force to pry the frame off of the device.

To reassemble your device, follow these instructions in reverse order.

This document was last generated on 2019-07-23 01:17:03 AM.