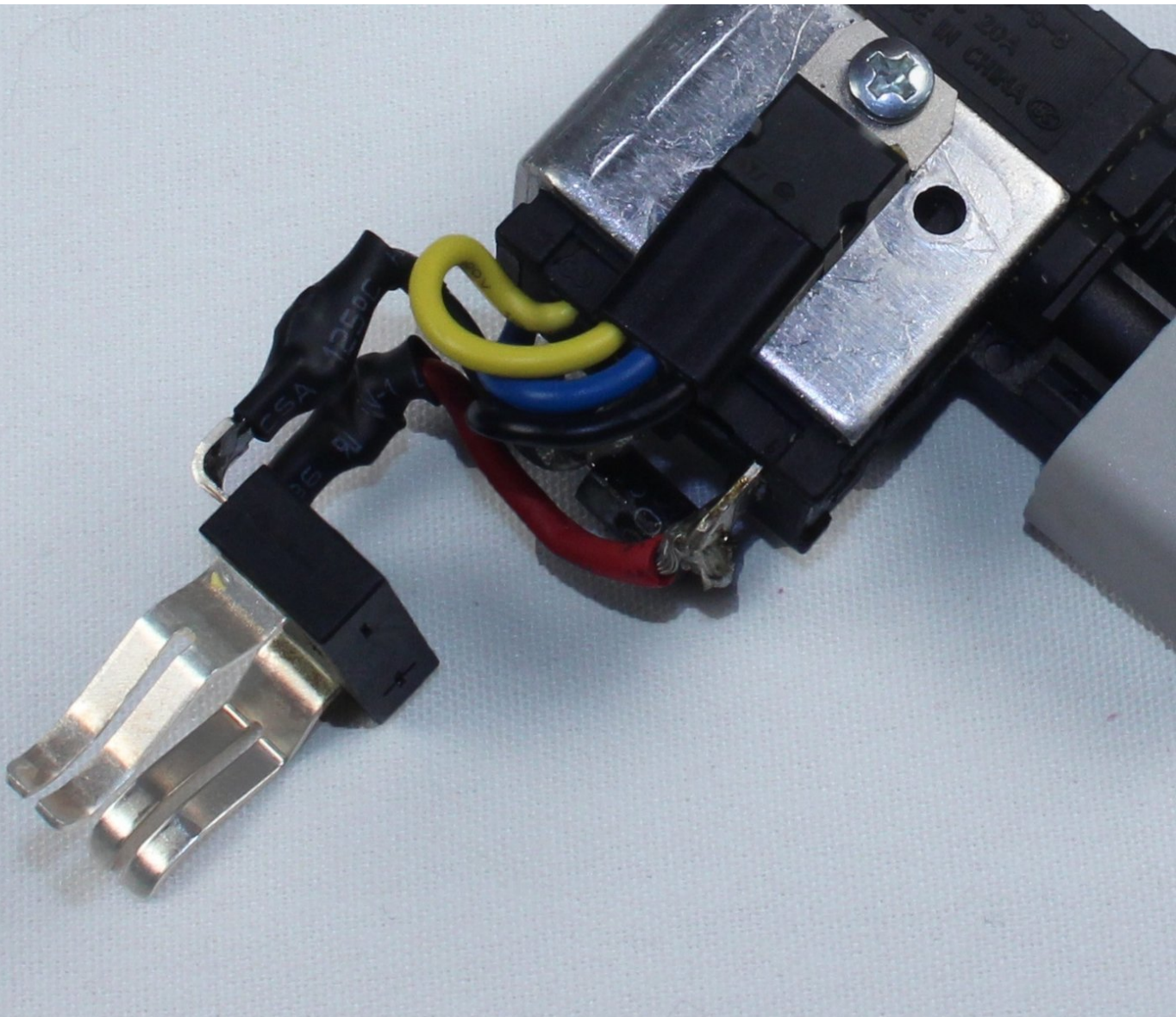




# Ryobi P202 Battery Contacts Replacement

A guide to the replacement of the Ryobi P202 battery contacts.

Written By: Joseph Eckstein



---

## INTRODUCTION

This guide demonstrates how to replace the battery contacts. The battery contacts are soldered and heat shrunk to the internal circuitry of the drill. The contacts are sometimes sold attached to the trigger assembly.

---

### TOOLS:

- [T10 Torx Screwdriver](#) (1)

## Step 1 — Battery



**⚠** The battery can shock you. Only touch plastic, non-conductive components.

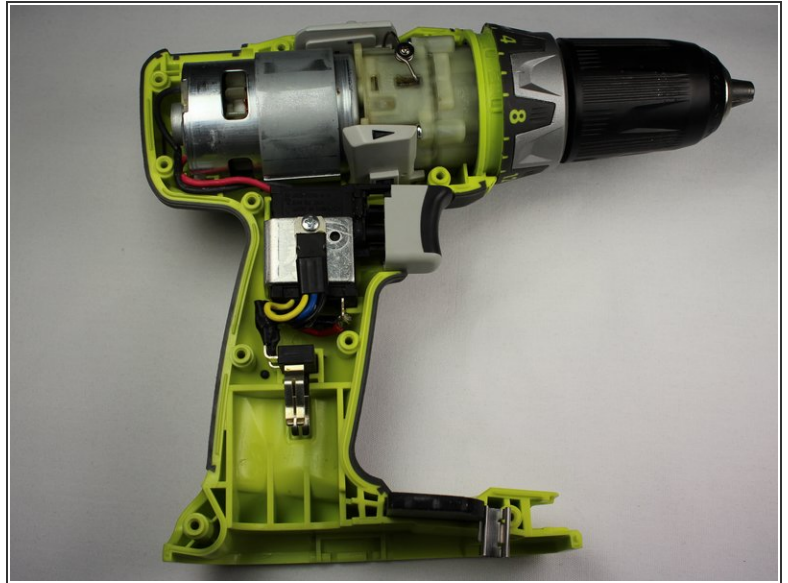
- Detach the battery unit from the drill body by pressing the battery release buttons on both sides of the unit and pulling outwards.

## Step 2 — Right Side Case



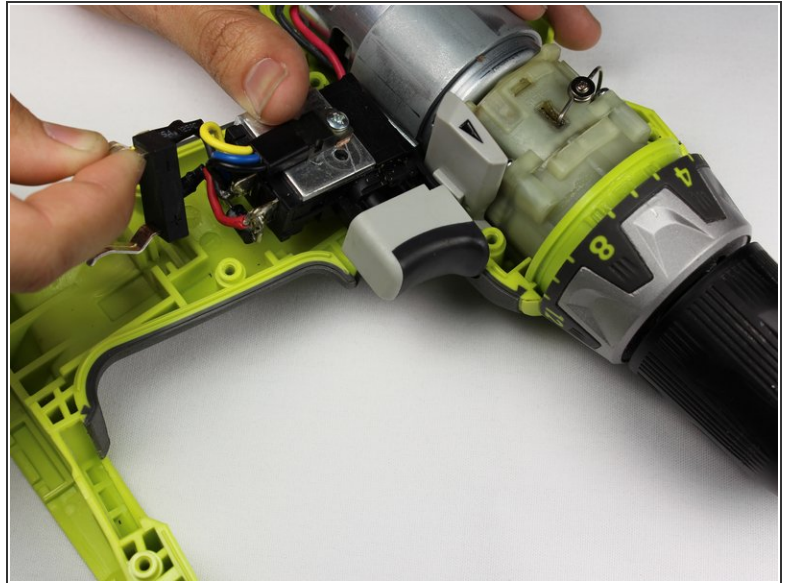
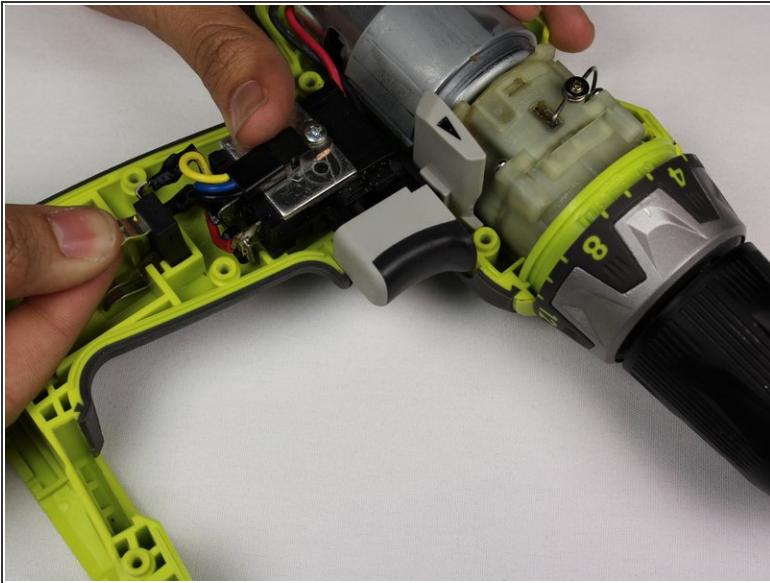
- Use a Torx T10 screw driver to unscrew all ten 13.5 mm screws from the drill casing to gain access to the interior.

## Step 3



- Gently lift the casing from the drill body.
  - Take the casing completely off the drill body to gain access to the interior of the drill.
- i** The Ryobi P202 casing has Part #: 200690001

## Step 4 — Battery Contacts



- Grip the battery clip and pull straight up to remove the metal battery contacts.
- You can now clean the metal battery contacts with isopropyl alcohol.

To reassemble your device, follow these instructions in reverse order.