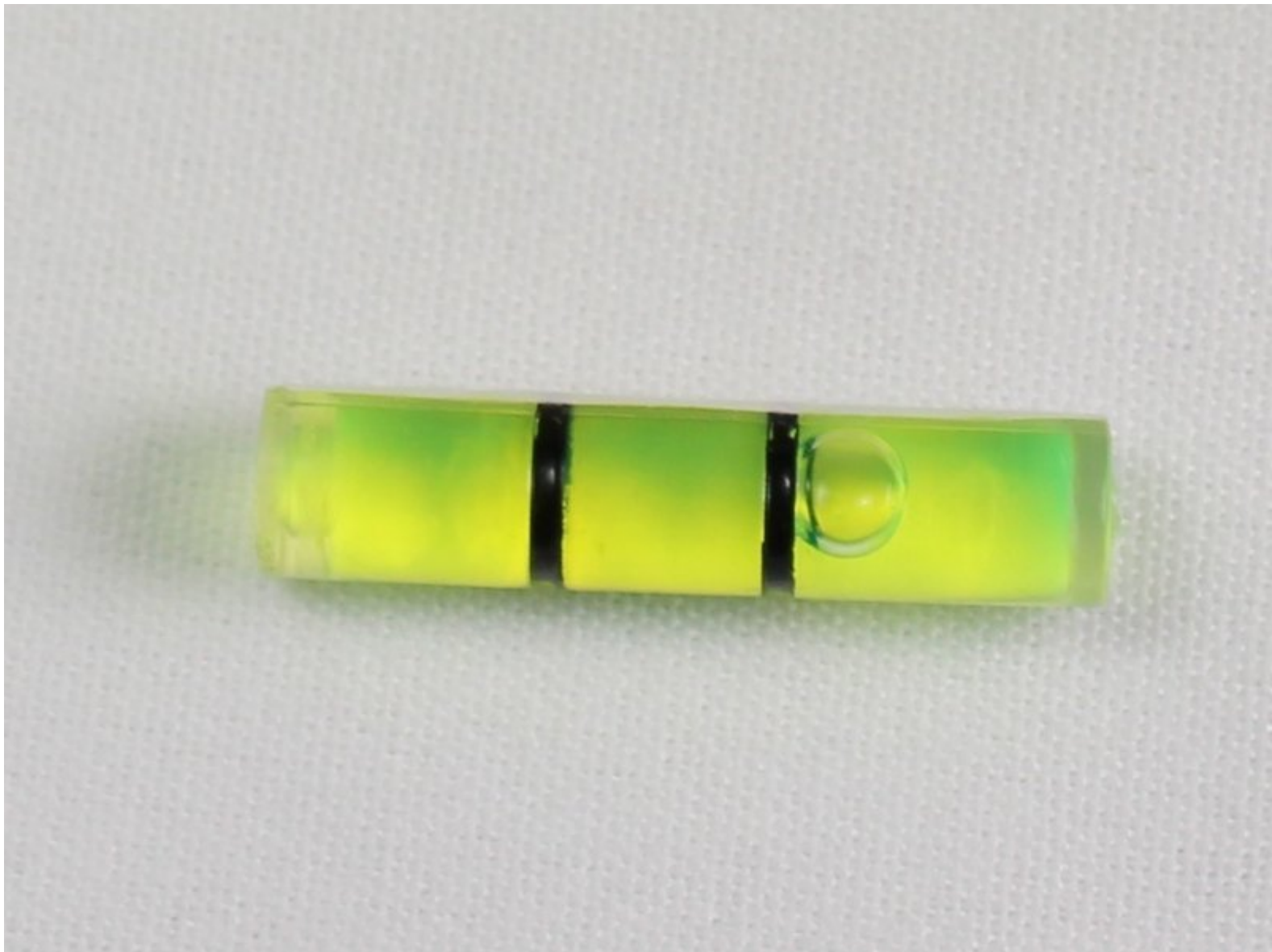




Ryobi P202 Level Gauge Replacement

Replacement of the Ryobi P202 bubble level guage.

Written By: Joseph Eckstein



INTRODUCTION

This guide demonstrates how to replace the level gauge of the drill, located along the top of drill. The process requires opening the drill, but does not require removing any of the internal electronic components.

TOOLS:

- [T10 Torx Screwdriver](#) (1)
-

Step 1 — Battery



⚠ The battery can shock you. Only touch plastic, non-conductive components.

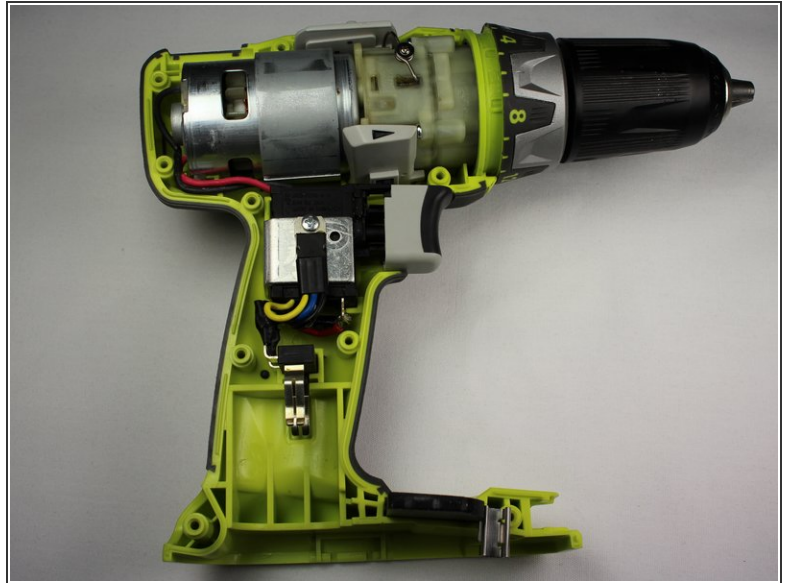
- Detach the battery unit from the drill body by pressing the battery release buttons on both sides of the unit and pulling outwards.

Step 2 — Right Side Case



- Use a Torx T10 screw driver to unscrew all ten 13.5 mm screws from the drill casing to gain access to the interior.

Step 3



- Gently lift the casing from the drill body.
 - Take the casing completely off the drill body to gain access to the interior of the drill.
- i** The Ryobi P202 casing has Part #: 200690001

Step 4 — Level Gauge



- Rotate the Drill 180 degrees so that the top is facing you.
 - Lift the level gauge out from the top corner of the drill.
- i** The level gauge is Part #: 3000909

To reassemble your device, follow these instructions in reverse order.

This document was last generated on 2019-07-11 06:09:40 AM.