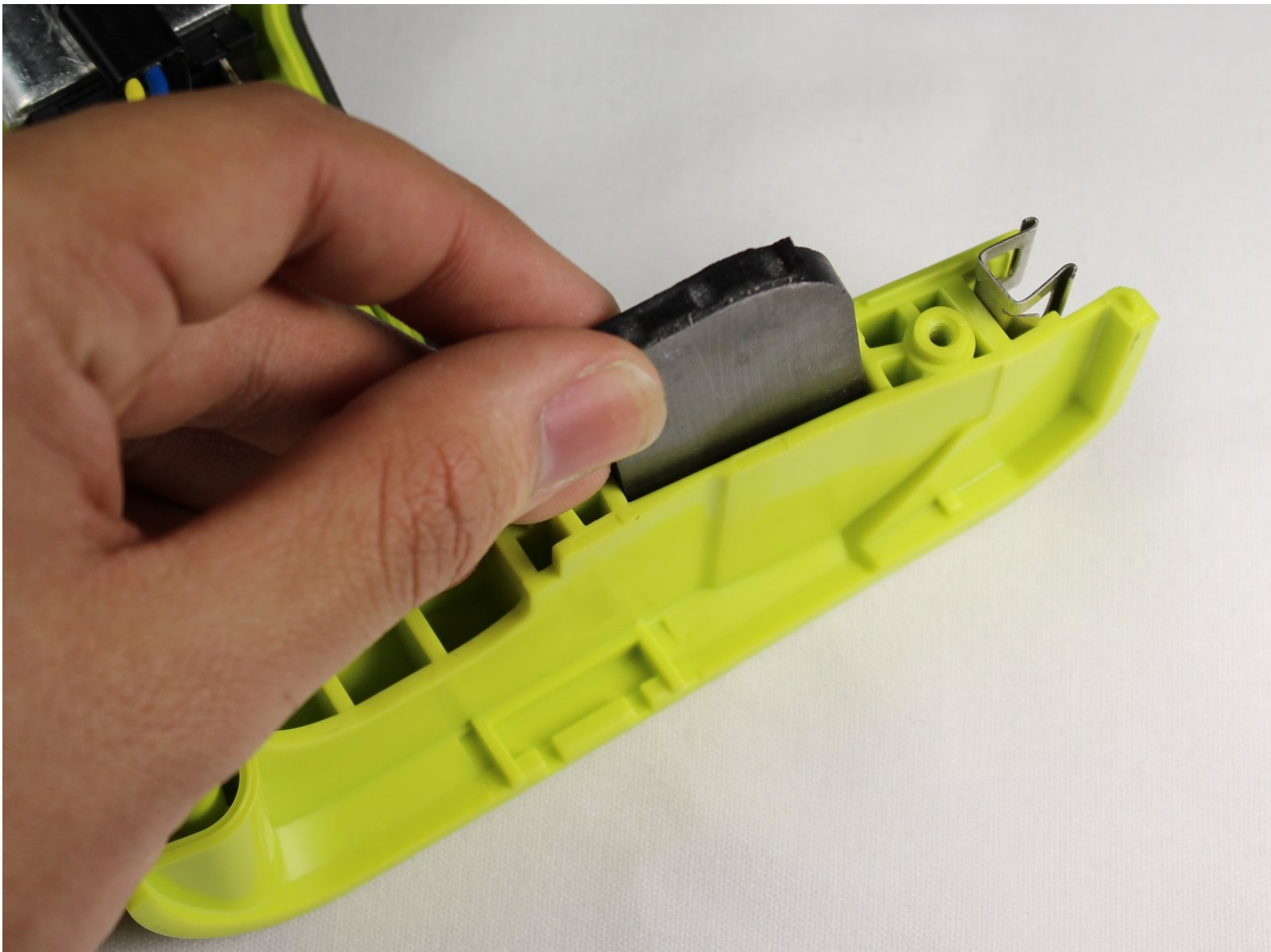




Ryobi P202 Magnetic Tray Replacement

Replacement guide for the magnetic storage tray.

Written By: Joseph Eckstein



INTRODUCTION


This guide demonstrates how to replace the magnetic storage tray located above the battery. This guide requires opening the drill, but does not require removing any of the internal electronic components.

TOOLS:

- [T10 Torx Screwdriver](#) (1)

Step 1 — Battery



 The battery can shock you. Only touch plastic, non-conductive components.

- Detach the battery unit from the drill body by pressing the battery release buttons on both sides of the unit and pulling outwards.

Step 2 — Right Side Case



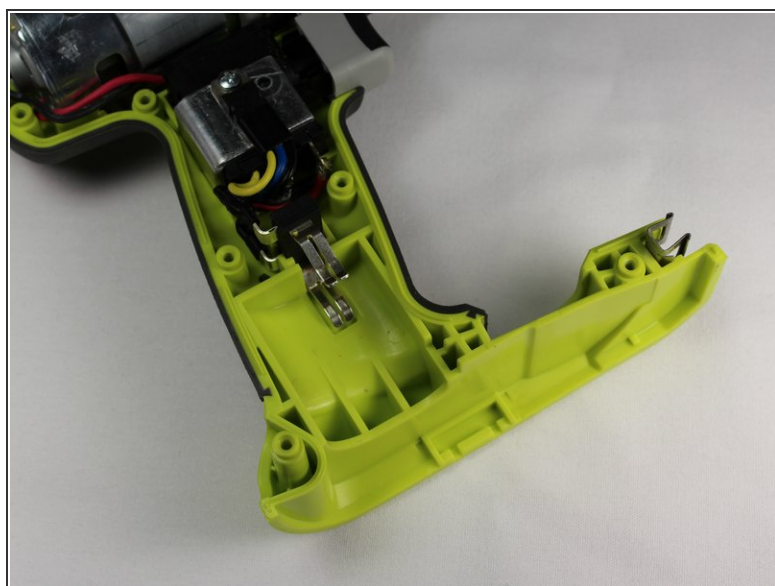
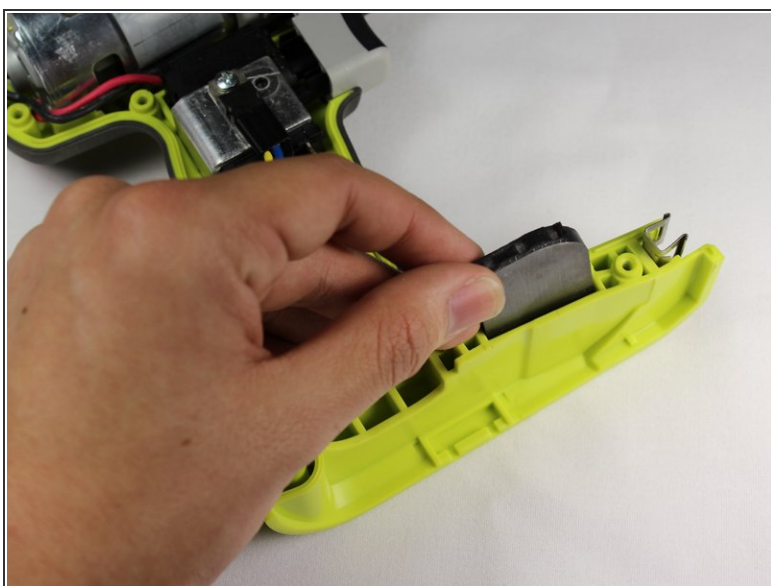
- Use a Torx T10 screw driver to unscrew all ten 13.5 mm screws from the drill casing to gain access to the interior.

Step 3



- Gently lift the casing from the drill body.
 - Take the casing completely off the drill body to gain access to the interior of the drill.
- i** The Ryobi P202 casing has Part #: 200690001

Step 4 — Magnetic Tray



- Gently lift the magnetic tray from the bottom of the drill body.

The magnet is Part #: 303001015



To reassemble your device, follow these instructions in reverse order.

This document was last generated on 2019-07-13 02:08:07 PM.