



# Nikon Coolpix L820 Settings Buttons Replacement

This guide will lead you through the process of accessing and replacing the Nikon Coolpix L820 settings buttons.

Written By: Marc



---

## INTRODUCTION

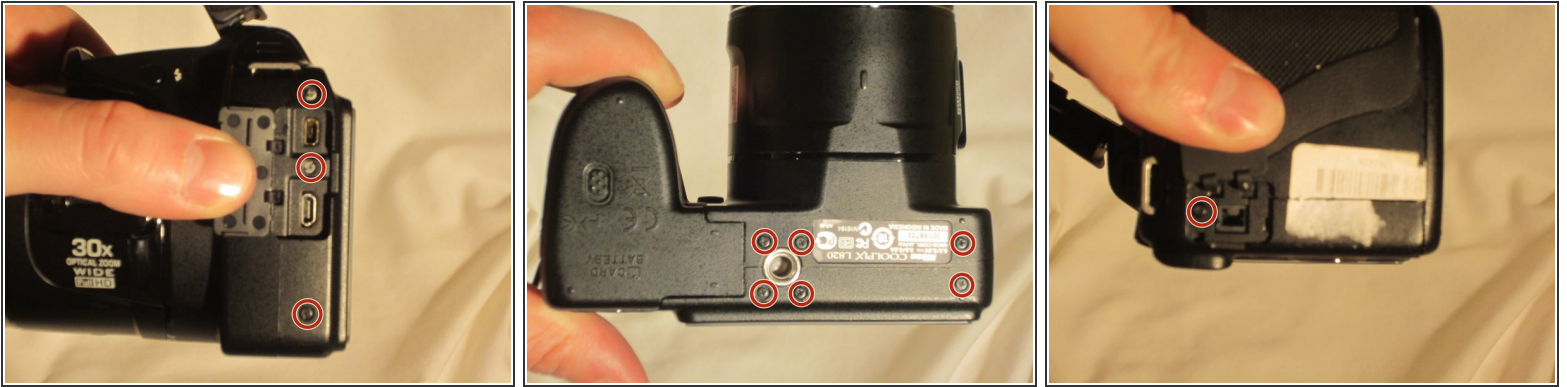
This guide will lead you through the necessary steps to replace the settings buttons.

---

### TOOLS:

- [Spudger](#) (1)
  - [Phillips #0 Screwdriver](#) (1)
  - [Tweezers](#) (1)
-

## Step 1 — Settings Buttons



 Remove the battery before beginning.

- Use a Phillips #0 screwdriver to remove the screws on the front casing. There are ten screws, three on the left side, two on the bottom, and one on the right side of the camera.

## Step 2



- Remove the front top Phillips screw with the screwdriver.
- Open the empty battery slot on the bottom of the camera, revealing four additional screws.
- Unscrew the four Phillips screws with the screwdriver.



### Step 3



- Using the spudger, move around the casing, carefully separating the rear housing from the camera assembly.
- ⚠ Be sure to only apply pressure to the casing panels and not the sensitive internal electronics.
- Once the rear housing is separated, the settings buttons will be accessible for replacement.

To reassemble your device, follow these instructions in reverse order.