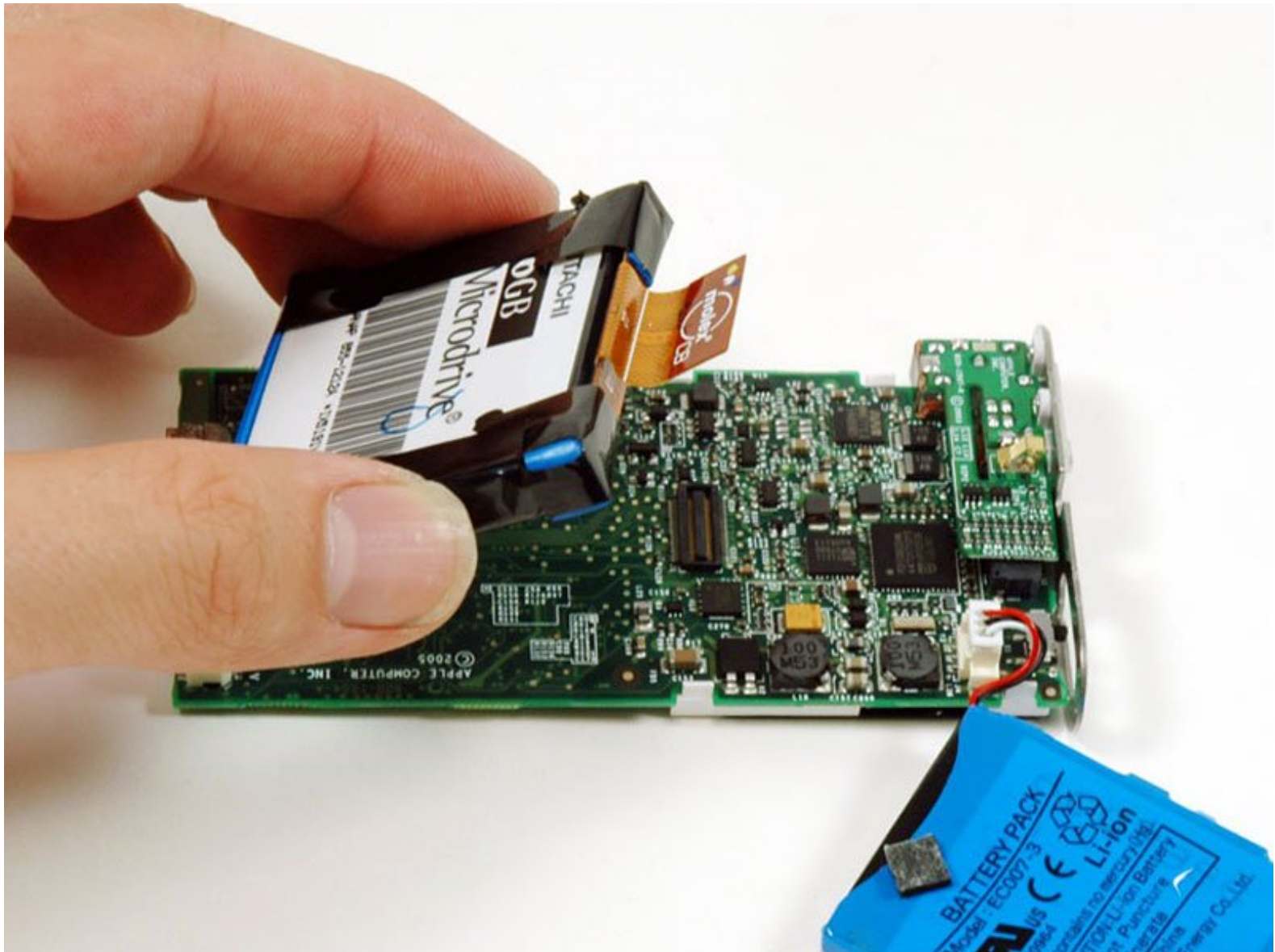




iPod Mini Hard Drive Replacement

Written By: iRobot



INTRODUCTION

Upgrade your storage with a new hard drive.



TOOLS:

- [Phillips #00 Screwdriver](#) (1)
- [Flathead 3/32" or 2.5 mm Screwdriver](#) (1)
- [Spudger](#) (1)



PARTS:

- [iPod Gen 1 Mini 4 GB Hard Drive](#) (1)
- [iPod Mini Gen 2 4 GB Hard Drive](#) (1)
- [iPod Mini 6 GB Hard Drive](#) (1)

Step 1 — Top Bezel



- ⓘ Before opening your iPod, ensure that the hold switch is in the locked position.

Step 2



- Carefully insert a small flathead screwdriver in the seam between the metal casing and white plastic top. Use the screwdriver to pry up the

white plastic top bezel. Be careful not to damage the soft plastic with your screwdriver.

- ⓘ The top bezel is held on with an adhesive, so it may be necessary to pry up in several different locations to free the part.
- To make this job easier, heat up the adhesive with a hairdryer on low heat for a few seconds.

Step 3



- Lift the top bezel off of the iPod.

Step 4 — Bottom Bezel



- Carefully insert a small flathead screwdriver in the seam between the metal casing and white plastic bottom. Use the screwdriver to pry up the white plastic bottom bezel. Be careful not to damage the soft plastic with your screwdriver.

Step 5



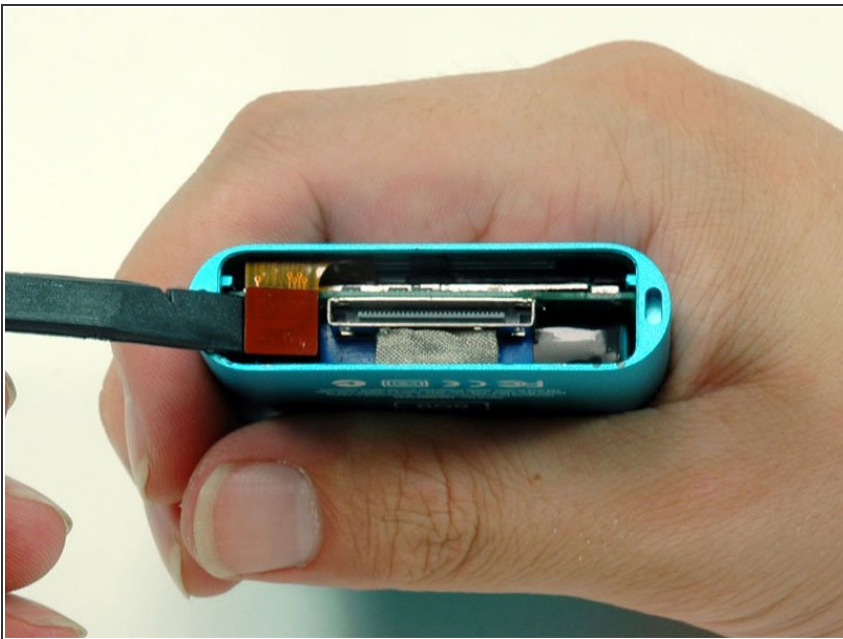
- A small pair of snap ring pliers is the easiest tool to remove the metal retaining bracket.
- You can also use a flathead screwdriver to pry out the metal retaining bracket beneath the bottom bezel as shown. You can free the bracket by first pushing in the metal arms on the corners and then lifting the bracket.

Step 6



- Lift the metal retaining bracket out of the iPod.

Step 7 — Hard Drive



- Use a spudger or the tip of your finger to carefully disconnect the orange click wheel ribbon from the logic board.

Step 8



- Remove the two #00 Phillips screws securing the headphone jack to the casing.

Step 9



- Carefully slide the iPod out of its casing by pushing on the logic board near the bottom edge of the click wheel.
- ⓘ Do not pull on the headphone jack board at the top of the iPod, as the connector to the logic board is fragile.

Step 10



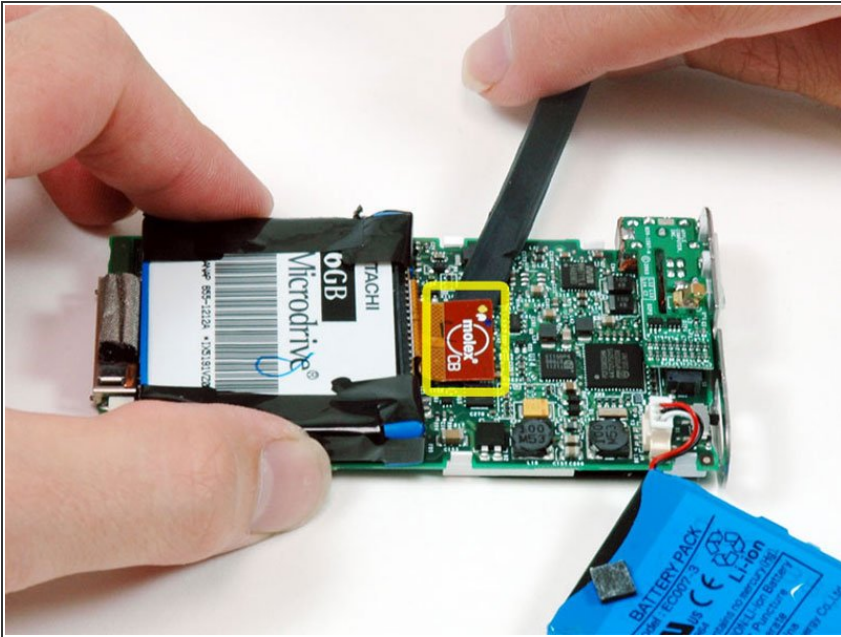
- After pushing the logic board out sufficiently, gently grasp the logic board on either side of the display, and continue to slide the iPod out of its casing.

Step 11



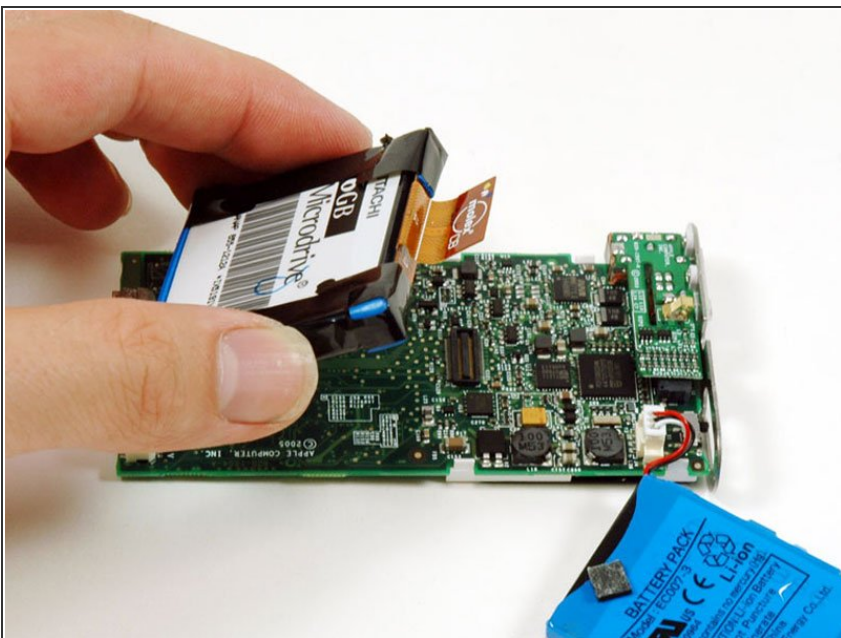
- Lift the battery off of the logic board and lay it to the side of the iPod.

Step 12



- Use a spudger or the tip of your finger to carefully disconnect the orange hard drive ribbon from the logic board.

Step 13



- Lift the hard drive out of the iPod.

To reassemble your device, follow these instructions in reverse order.