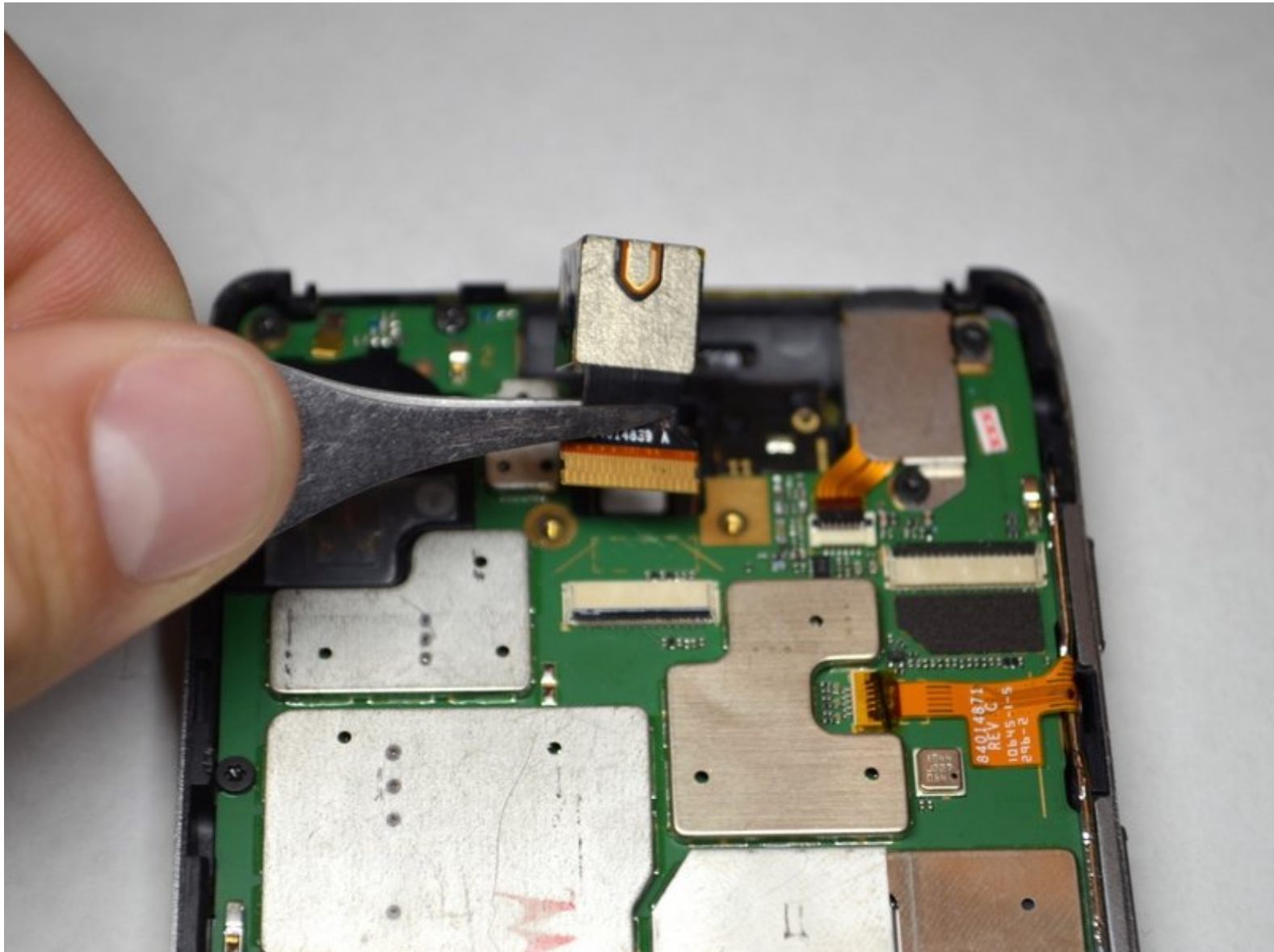




# Motorola Droid RAZR HD Rear Facing Camera Replacement

A guide to replacing the rear camera of the Droid RAZR HD.

Written By: Ryan Meinhardt



---

## INTRODUCTION

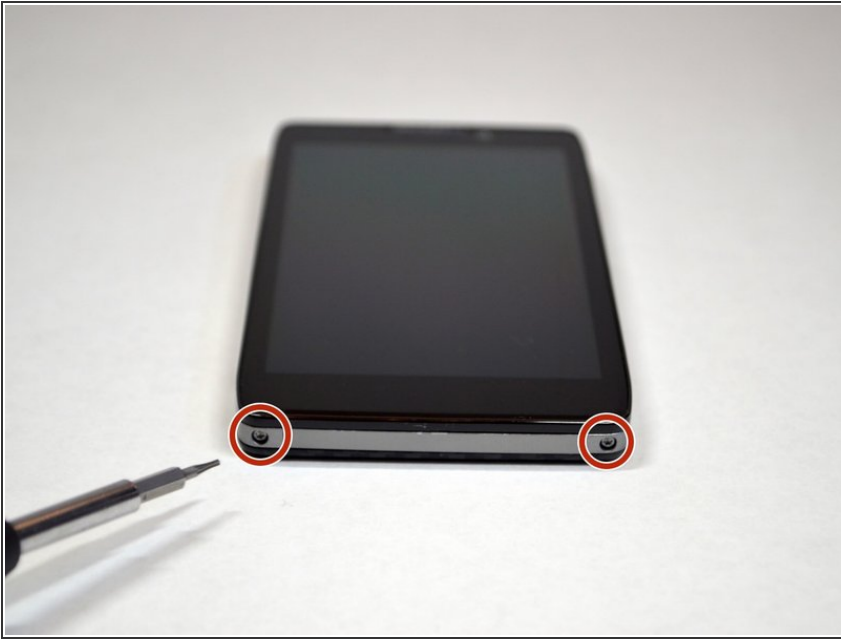
You just came back from vacation in Hawaii, but because your rear camera wasn't working, you didn't get a single picture. With this guide, you can make sure this doesn't happen again.

---

### TOOLS:

- [iFixit Opening Tools](#) (1)
  - [T4 Torx Screwdriver](#) (1)
  - [Tweezers](#) (1)
-

## Step 1 — Front Panel Assembly



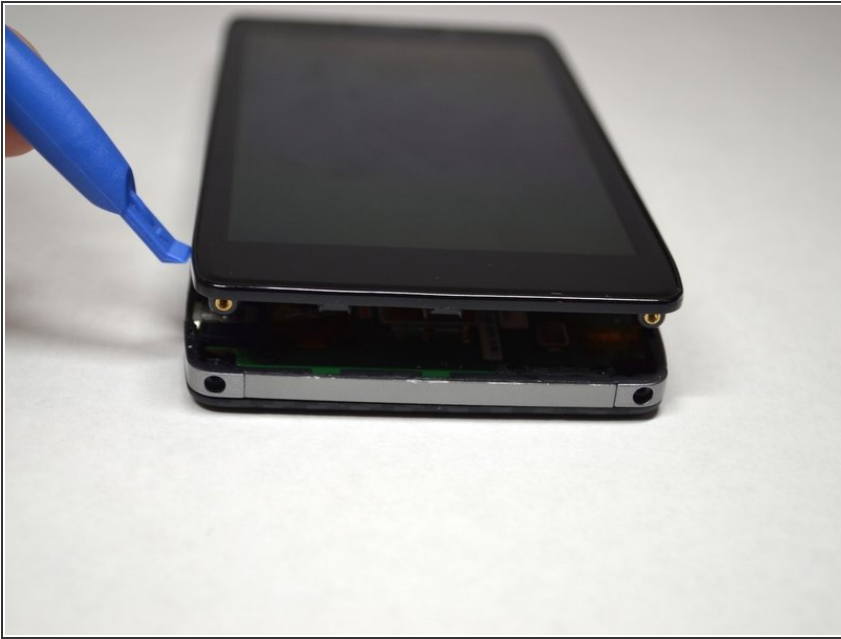
- ⚠ Power off the device before disassembly to avoid damage or harm from electrical surges.
- Remove the two 4.5mm screws in the bottom left and right corners of the device using a T4 Torx Screwdriver.

## Step 2



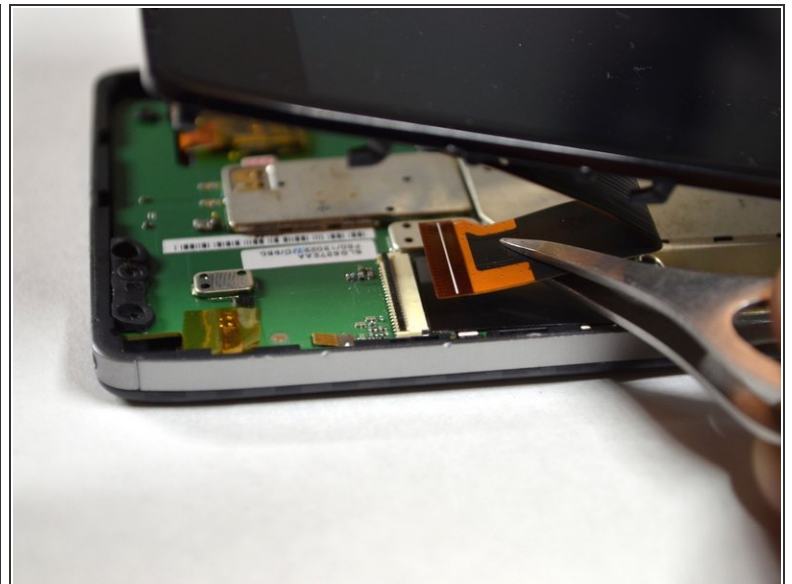
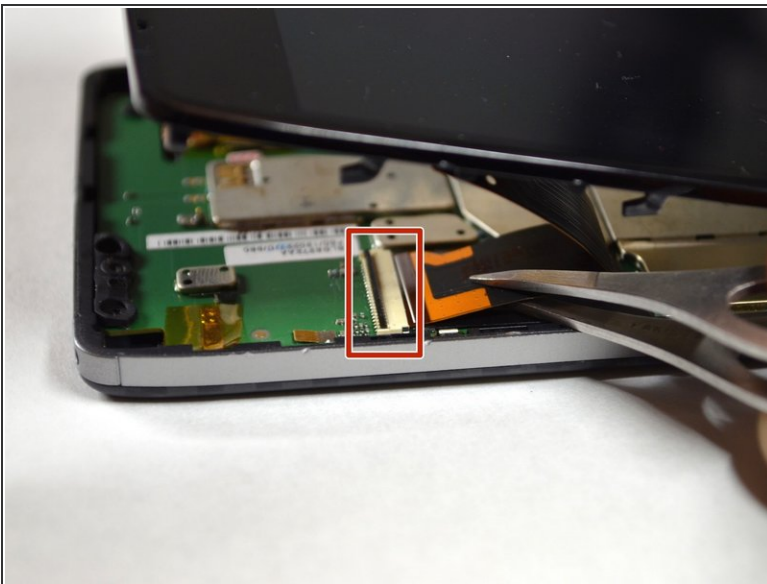
- Holding the device in your hand, push the screen towards the top of the phone until it disconnects from the base of the phone.

### Step 3



- Use a plastic opening tool to lift the screen from the phone.
- ⚠ Do not try to completely detach the screen; cables are still connected to the device and can be damaged.

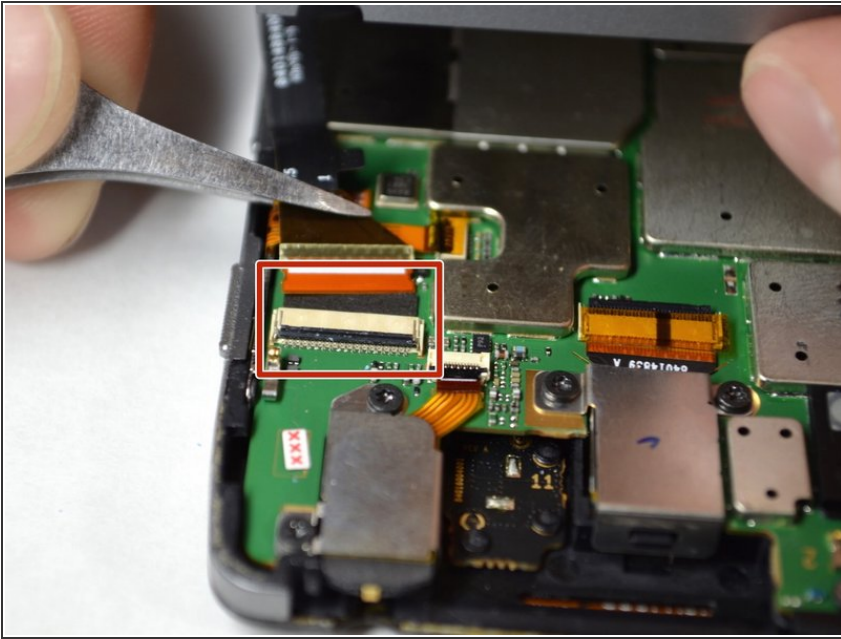
### Step 4



- Use tweezers to remove the yellow tape covering the lcd/digitizer cable connector.
- Carefully lift up the black locking tab to release the lcd/digitizer cable.
- ⓘ The cable connector is located on the bottom right section of the phone.

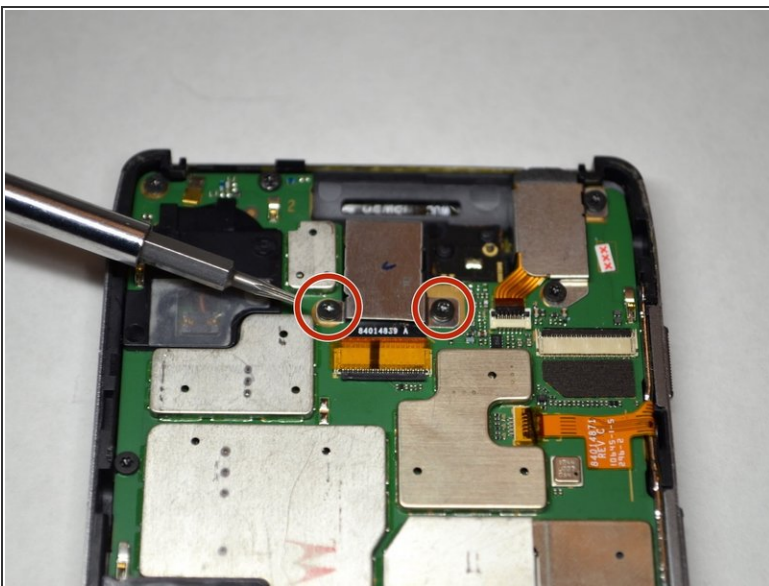


## Step 5



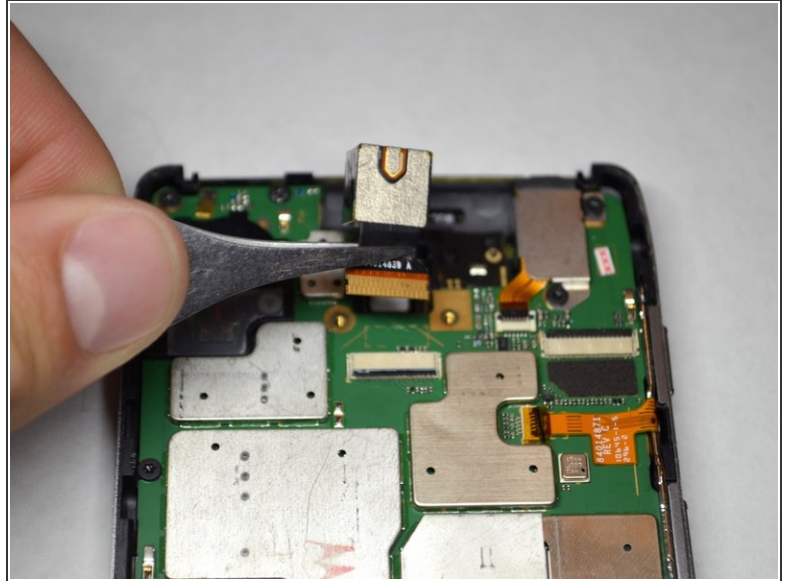
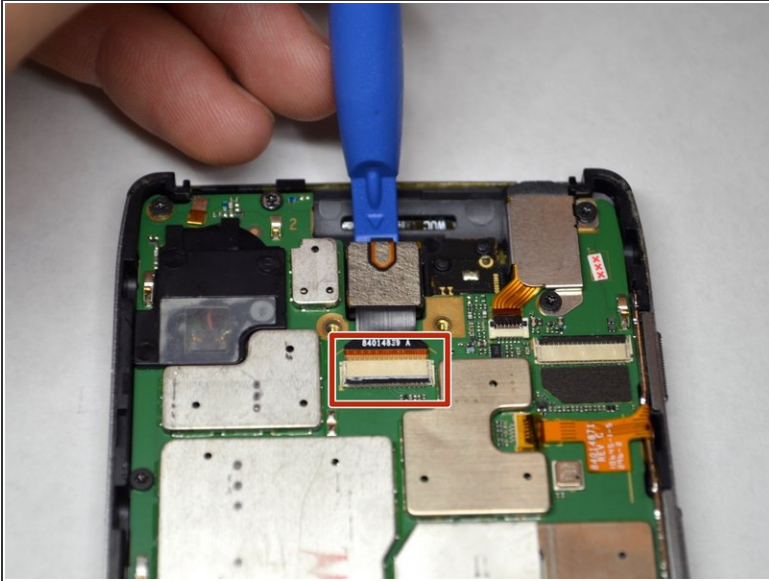
- Lift up the screen further to reveal another cable at the top of the device connecting the motherboard to the screen.
- ⓘ This connector is located on the top right section of the phone.
- Use tweezers to lift the black bar on top of the ZIF connector.
  - Pull the ribbon cable out of the connector with tweezers.
- Now that there are no cables connecting the screen to the motherboard, remove the screen.

## Step 6 — Rear Facing Camera



- Remove the two 3.5mm Torx T4 screws securing the rear facing camera.
- Using tweezers, remove the metal shield protecting the rear facing camera.

## Step 7



- Use a plastic opening tool to lift up the rear camera.
- Use tweezers to lift and unlock the black bar on top of the rear camera's ZIF connector.
  - Pull the camera out of the connector.
- ⓘ You will need to unplug the rear camera from its connector on the motherboard.

To reassemble your device, follow these instructions in reverse order.

This document was last generated on 2019-08-02 04:45:19 AM.