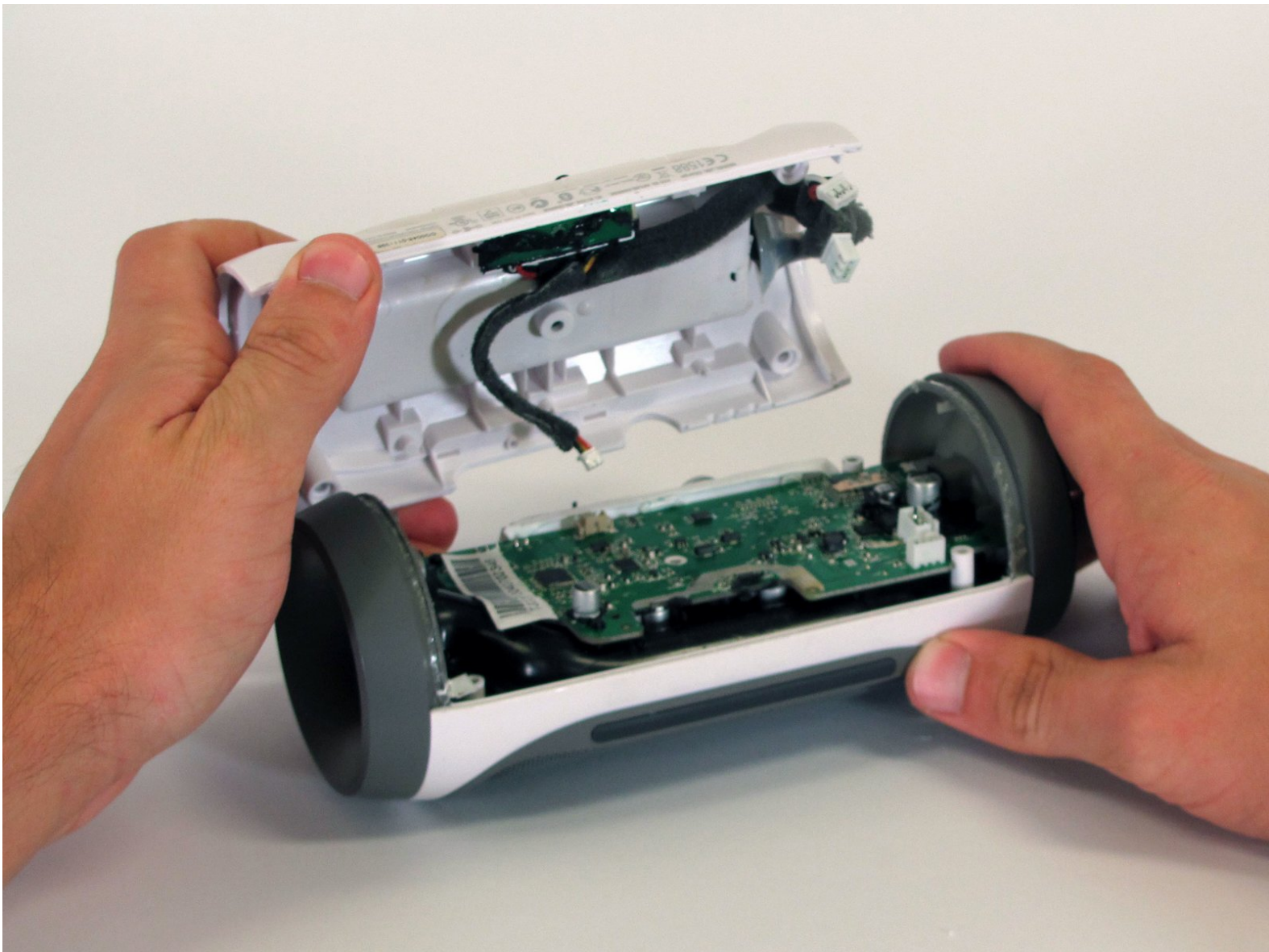




Disassembling JBL Charge Casing

If one is to repair the JBL Charge, first they must get into the device. Follow this guide to open the JBL Charge.

Written By: Joe Durand



INTRODUCTION

It's hard to repair anything without opening it up first.

TOOLS:

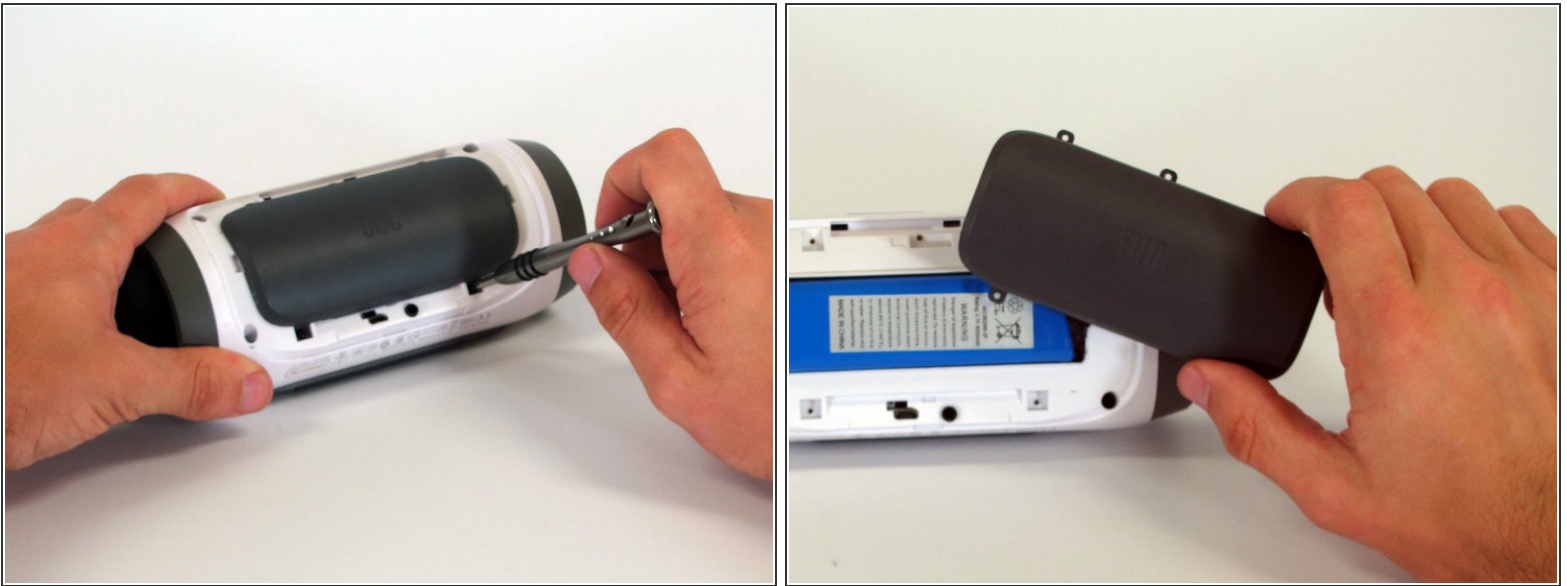
- [Metal Spudger](#) (1)
 - [Phillips #1 Screwdriver](#) (1)
 - [Spudger](#) (1)
 - [Phillips #2 Screwdriver](#) (1)
-

Step 1 — Disassembling JBL Charge Casing



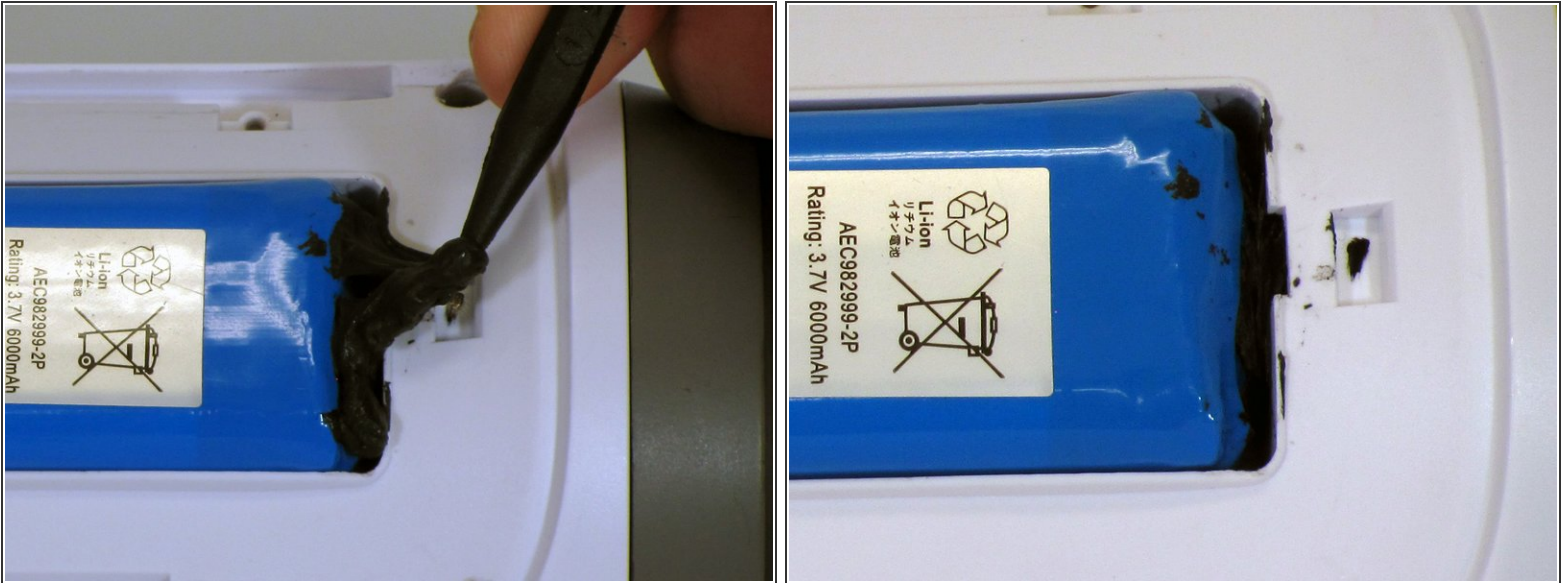
- Make sure the device is powered off before you begin.
- Separate the trim from the device using a jimmy or metal spudger.

Step 2



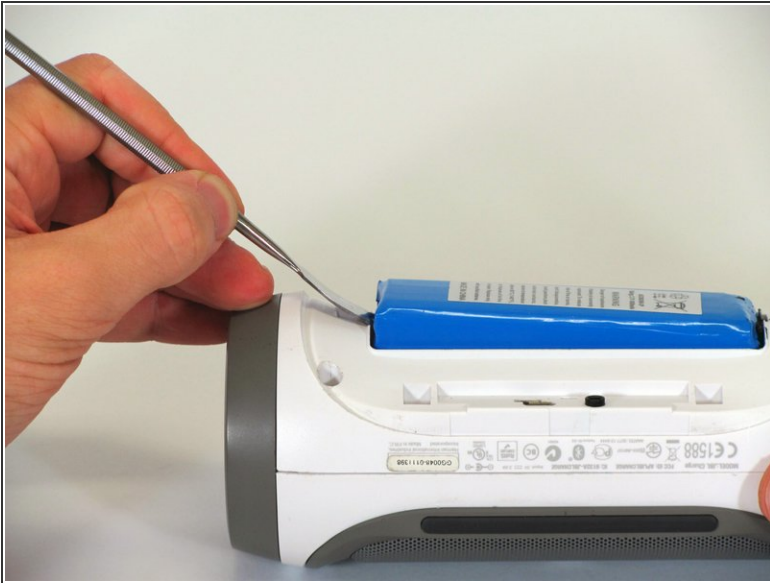
- Use the PH1 screwdriver to remove the five 6 mm screws from the battery cover.
- Remove the battery cover and set it aside.

Step 3



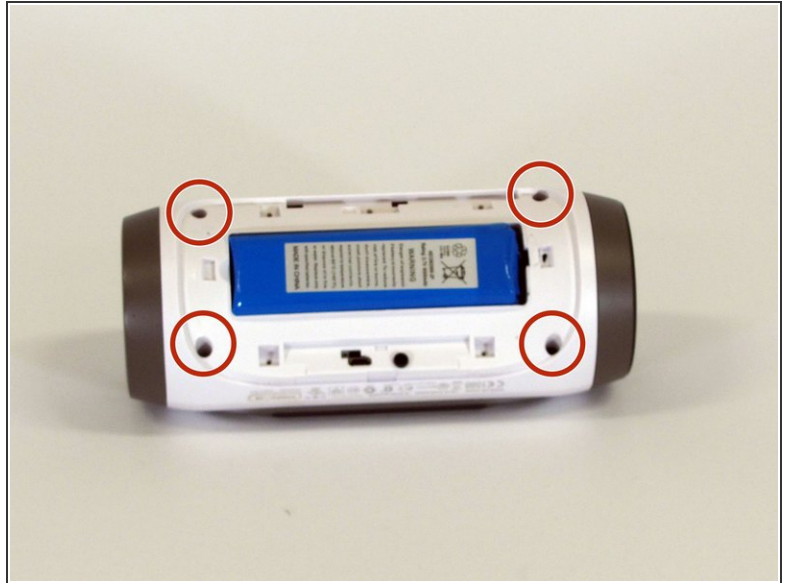
- Use a spudger to carefully remove the liquid electrical tape holding the battery inside the battery compartment.
- ⚠ Be careful to not puncture the battery, or damage the battery wire underneath the liquid electrical tape.

Step 4



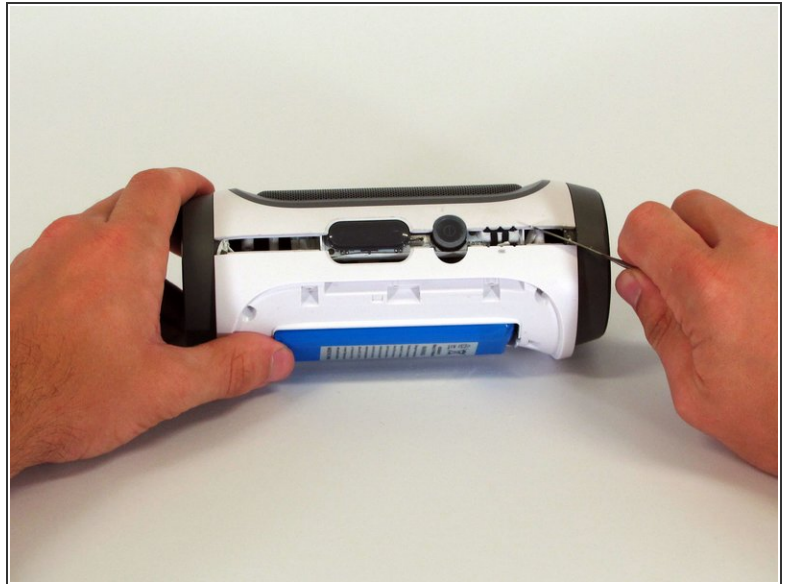
- Use a metal spudger to pry the edge of the battery out of the device.
 - Lift the battery and remove the 16 mm PH2 screw underneath.
- ⚠ Notice the battery wire connecting the battery to the device. Attempting to remove the battery completely could cause damage to the wire.

Step 5



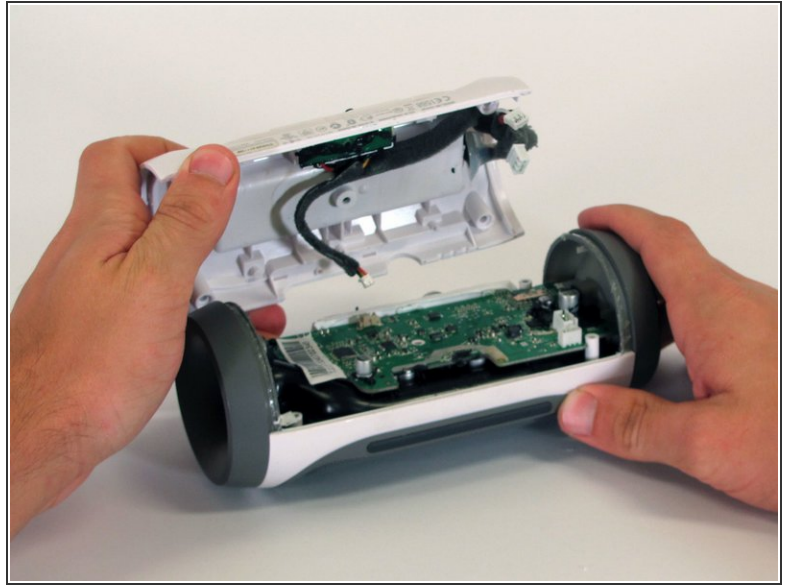
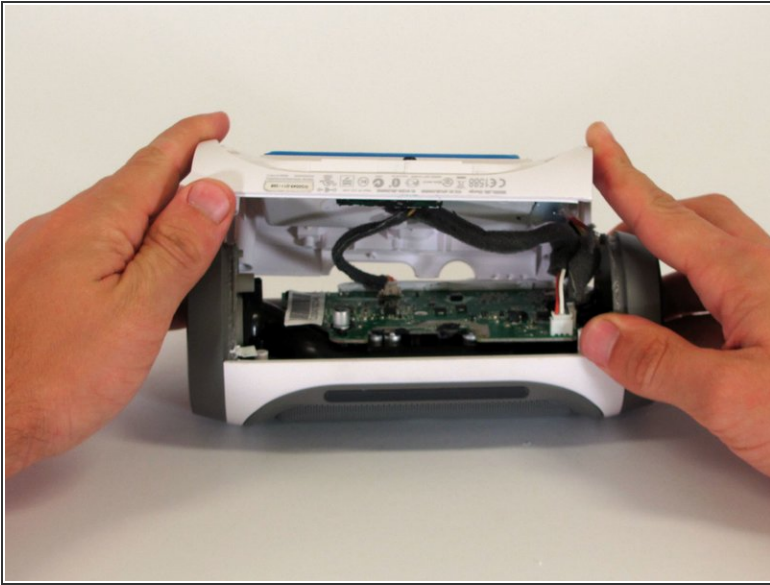
- Remove the remaining four 16 mm screws from the white plastic casing using the PH2 screwdriver.

Step 6



- Start in a corner, where the casing and the side meet. Use a pointed metal spudger to pry apart the glue holding these seams together.
- Slide the metal spudger along these seams to separate the back casing from the rest of the speaker.

Step 7



- Once the device is open, disconnect the three white connectors from the motherboard.
- Remove the upper casing.

To reassemble your device, follow these instructions in reverse order.

This document was last generated on 2019-01-15 10:37:34 AM.