



Ninja NJ600 Power Cord Replacement

This guide will show you how to analyze the issue with your power cord and replace it.

Written By: Trevor Waite



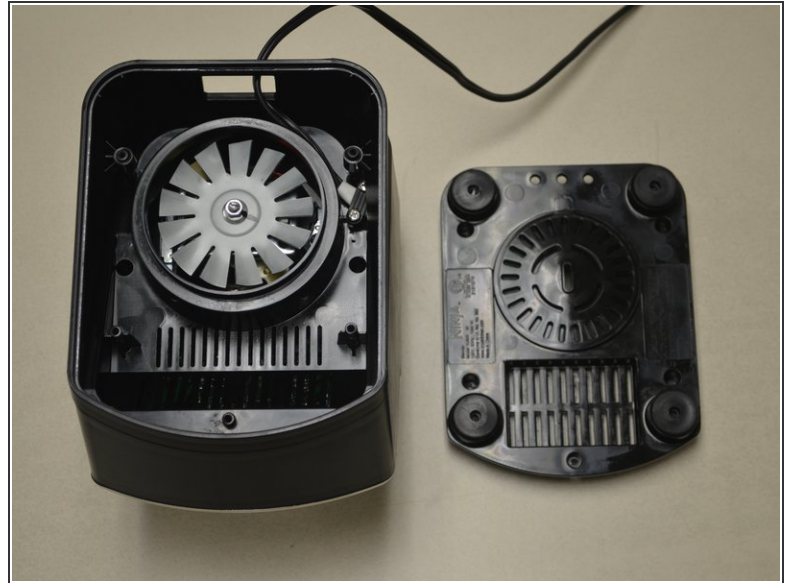
INTRODUCTION

If your blender is not turning on, it may be due to a faulty power cord. This guide will show you how to disassemble your blender, and it will help you locate and address two possible problems that have caused your power cord to malfunction.

TOOLS:

- [Phillips #2 Screwdriver](#) (1)
 - [Utility Scissors](#) (1)
 - [Soldering Workstation](#) (1)
-

Step 1 — Blender Base Cover



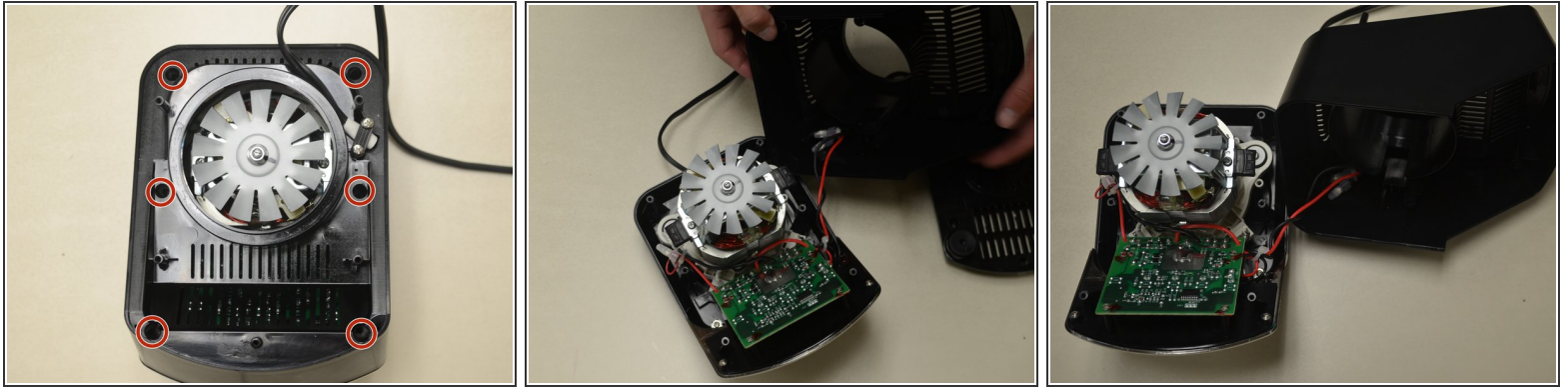
- Remove the five screws (13mm long, 6mm head diameter) using a Phillips #2 screwdriver.

Step 2



- Without removing any screws, you can pull the 2nd layer free from the base. Do this now and set it down gently next to the base.
- The power cord runs through a hole in the side of this layer. Squeeze the cord and pull it through the hole to separate the layer from the cord.

Step 3



- Using the Phillips #2 screwdriver, remove these six screws (13mm long, 6mm head diameter). Then carefully remove this layer, and rest it next to the blender base.

⚠ Be careful not to damage the two wires that are keeping this third layer attached to the base.

Step 4 — Power Cord



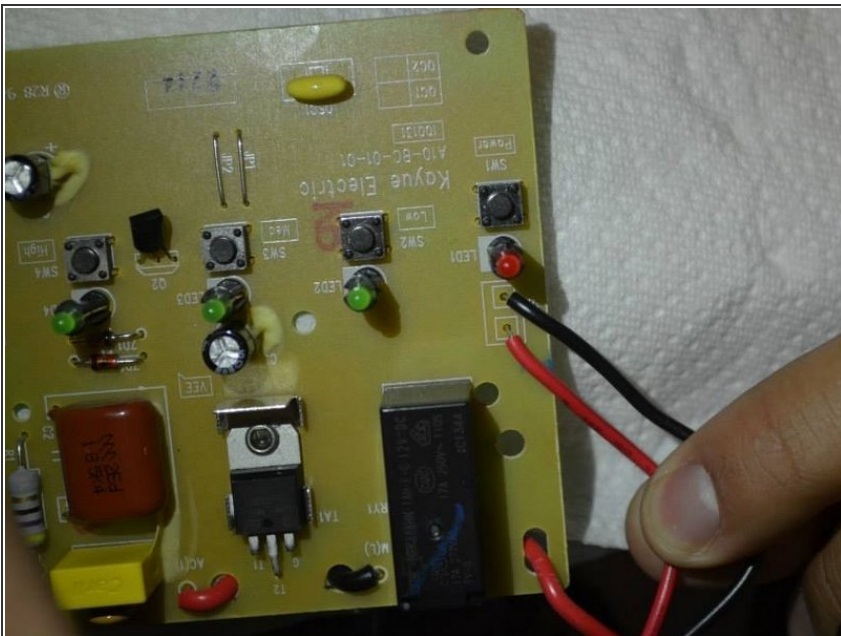
- Remove these two screws (10mm long, 5mm head diameter) using a Phillips #2 screwdriver.

Step 5




- Your blender and power cord should look like this now that the two screws have been removed.
- In the next steps we will highlight two issues that your power cord may have.

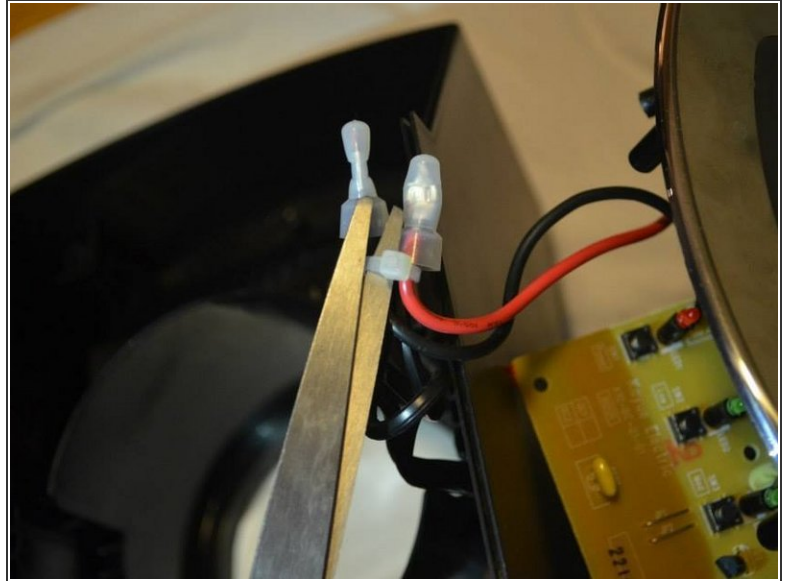
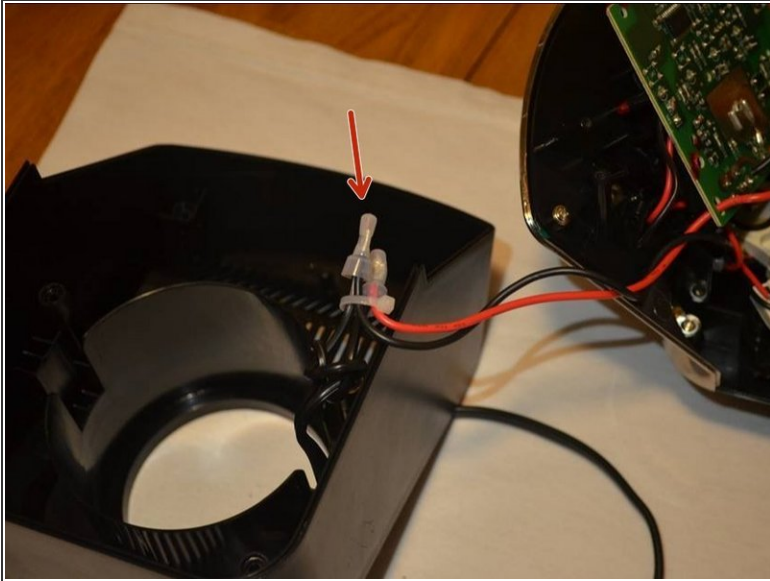
Step 6




- Your power cord is soldered to the circuit board as shown.
- A loose or damaged connection could explain why your blender is not turning on.
- Desolder the connection using the iFixit [guide](#) that describes this process.
- Solder the wires back on to the circuit board. Refer to the iFixit soldering [guide](#) for assistance.

 Soldering iron is very hot, use caution when handling

Step 7



- If there were no issues with the soldering connection in Step 6, check the wiring in the picture shown.
- Remove the zip ties with a pair of scissors. Then remove the plastic that covers the wires.
- If the wires underneath the plastic covers are loose or disconnected, try to desolder and solder the wires. Use the iFixit soldering [guide](#) to assist in this step.

 Soldering iron is very hot, use caution when handling

To reassemble your device, follow these instructions in reverse order.