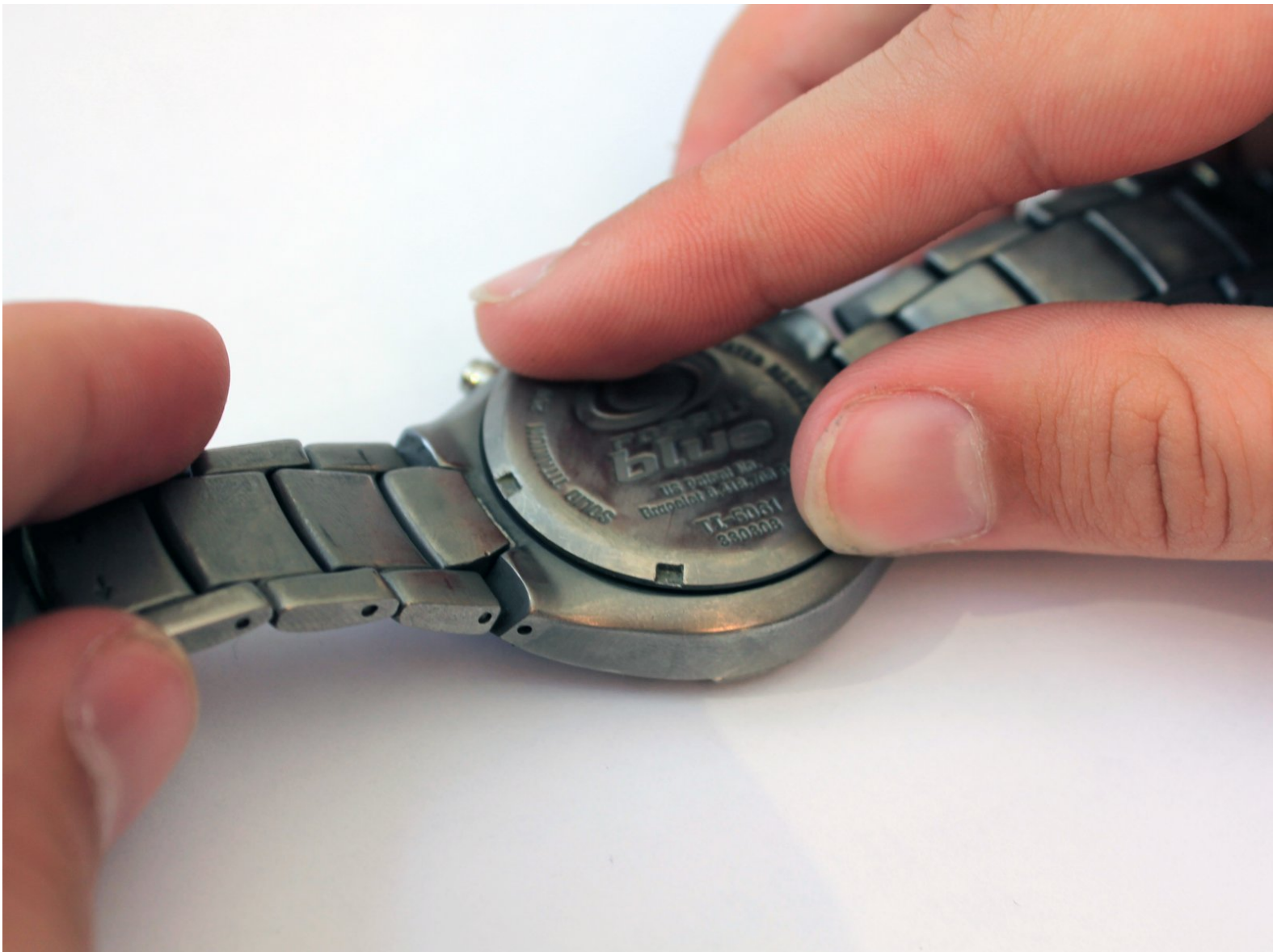




Fossil Speedway Watch TI-5061 Replacement of the Back

This guide shows how to remove the screw back of a Fossil Speedway TI-5061 watch.

Written By: Zachary Price



INTRODUCTION

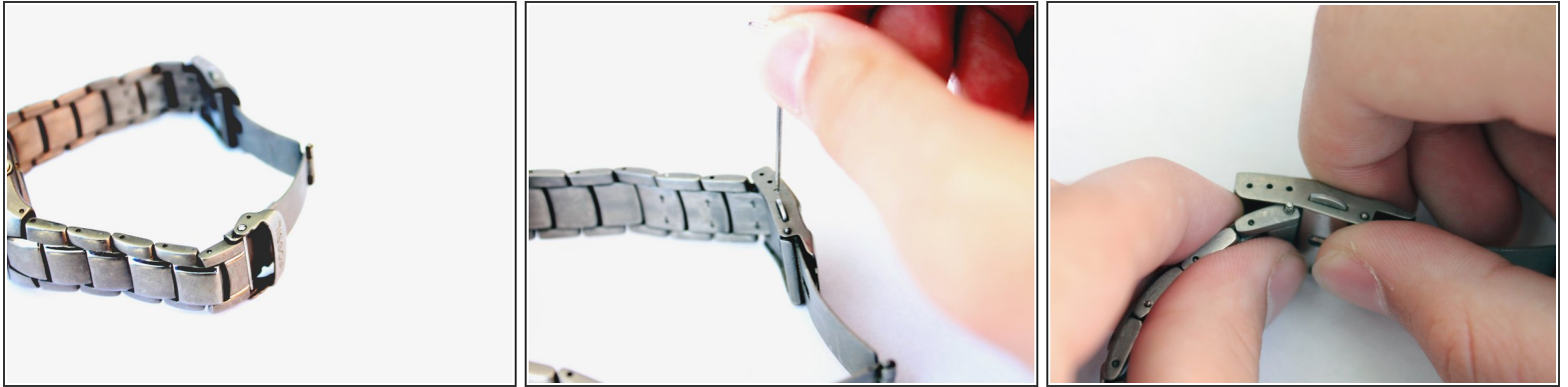
If the back of the watch is damaged or seems faulty in some way (no longer water resistant, rusted, etc), you can follow these simple steps to replace it.

Be aware that using scissors may be a dangerous way to remove the back of the watch. It could scratch the back of the watch or it could give you a serious cut. Be careful when using scissors to open the back of the watch. Alternatively, you could [click here](#) to view a guide with the proper tools. Another thing to be aware of is that the parts in your watch are very small and fragile. Be wary not to break or lose any parts.

TOOLS:

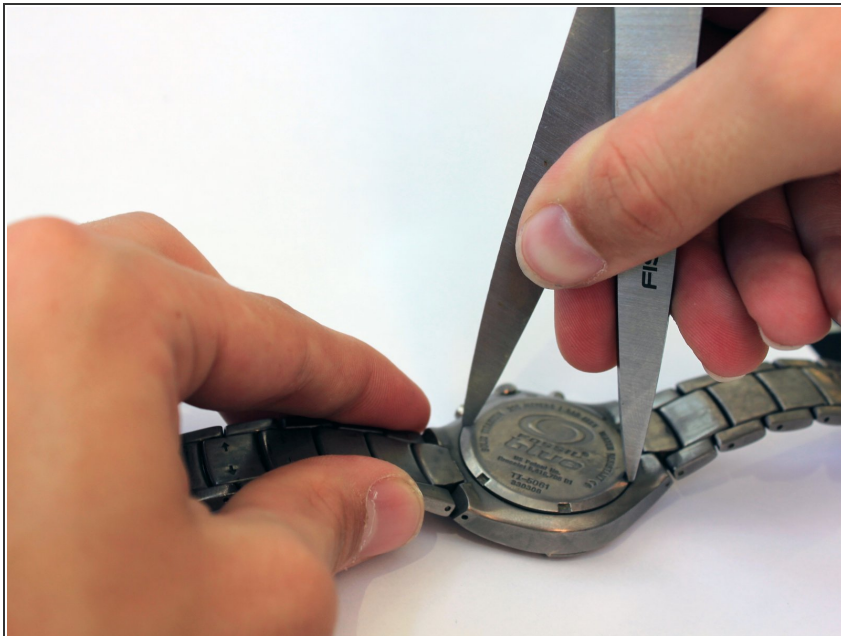
- [Utility Scissors](#) (1)
 - [Push Pin](#) (2)
-

Step 1 — Clasp



- Keep clasp in open position.
- Push one of the spring-loaded pins out of the hole with a Push-pin.
- Wiggle watch band and clasp till free from each other.

Step 2 — Back



- Fit the blades of a pair of scissors into the grooves of the screw back.
- Twist the screw back counter clockwise with the scissors.
- Once the back is loose enough, you can use your fingers to twist it off.

To reassemble your device, follow these instructions in reverse order.