



iPod Nano 2nd Generation Top Bezel Replacement

Written By: iRobot



INTRODUCTION

The plastic part on the top of the iPod.



TOOLS:

- [iFixit Opening Tools](#) (1)



PARTS:

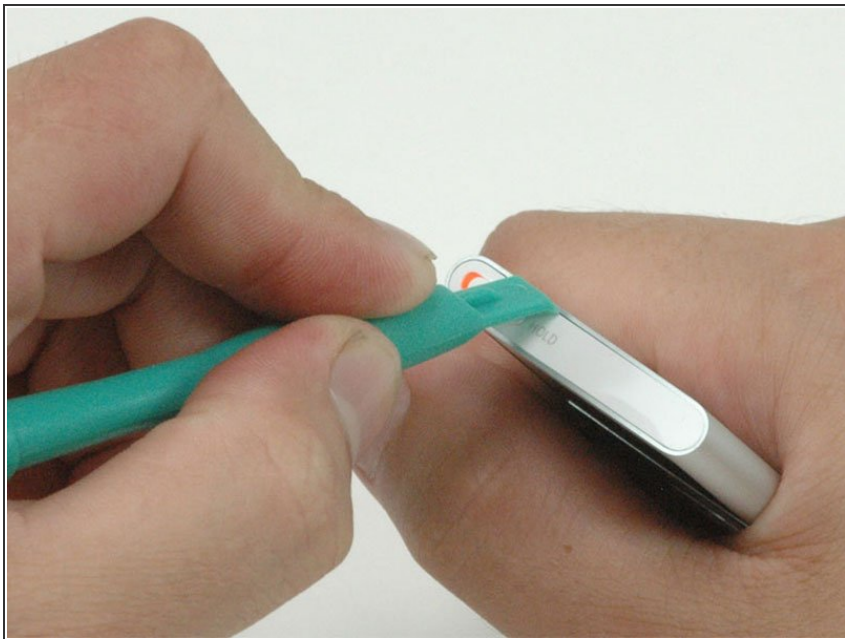
- [iPod nano \(2nd Gen\) Top Bezel](#) (1)

Step 1 — Top Bezel



- ⓘ Before opening your iPod, ensure that the hold switch is in the locked position.

Step 2



- Carefully insert an iPod opening tool in the seam between the metal casing and white plastic top.
- Lift the top bezel off the iPod. It's glued on using a mild adhesive, so some force may be required.

To reassemble your device, follow these instructions in reverse order.