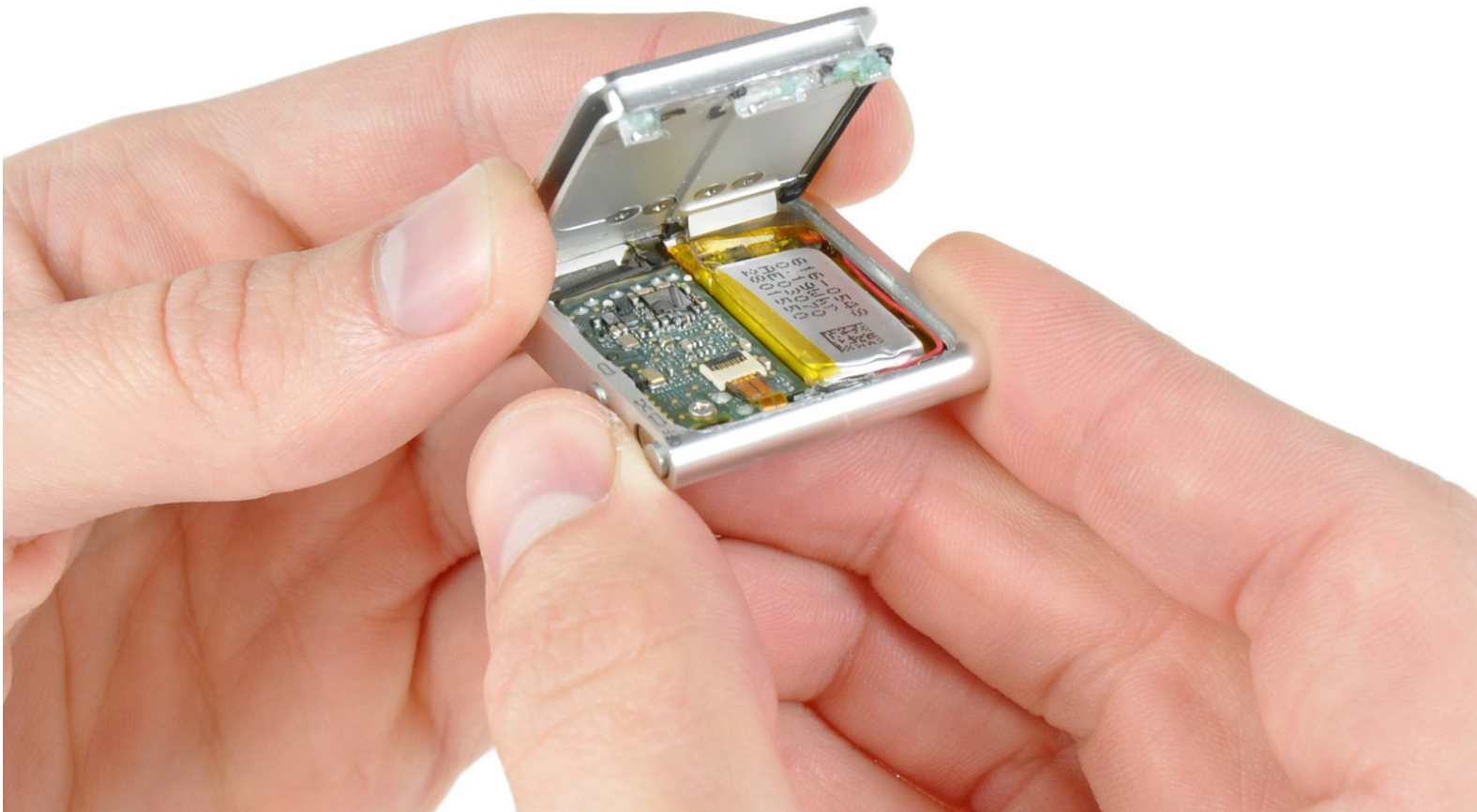




iPod Shuffle 4th Generation Rear Panel Replacement

Remove your 4th generation iPod Shuffle's rear panel to access its internals.

Written By: Walter Galan



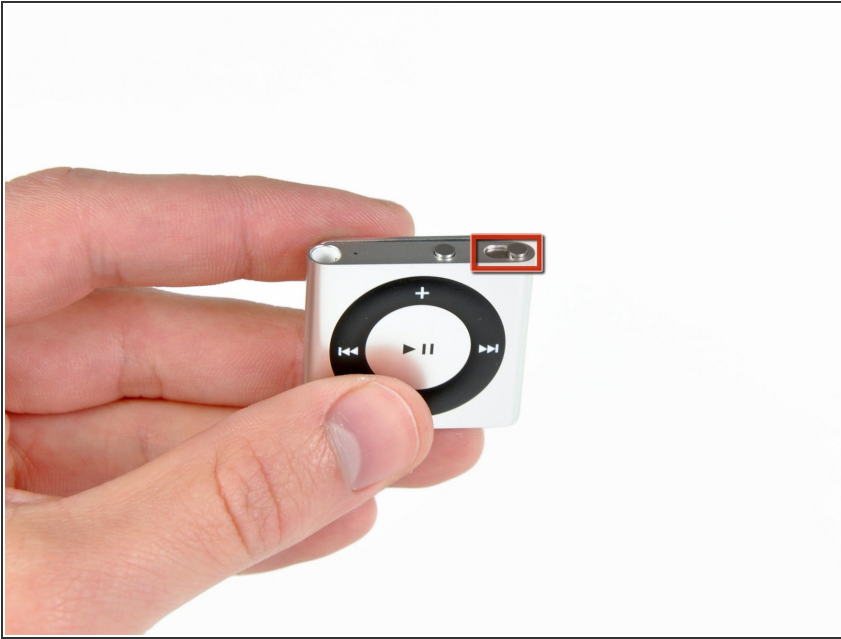
INTRODUCTION

Remove the rear panel to access the internals of your Shuffle.

TOOLS:

- [Metal Spudger Set](#) (1)
 - [iFixit Opening Tools](#) (1)
-

Step 1 — Rear Panel



⚠ Accessing the internals of the 4th generation Shuffle is extremely difficult, as the rear panel is both glued to the front case and secured by metal retaining clips. It is highly unlikely that you will be able to remove the rear panel without inflicting cosmetic and/or structural damage.

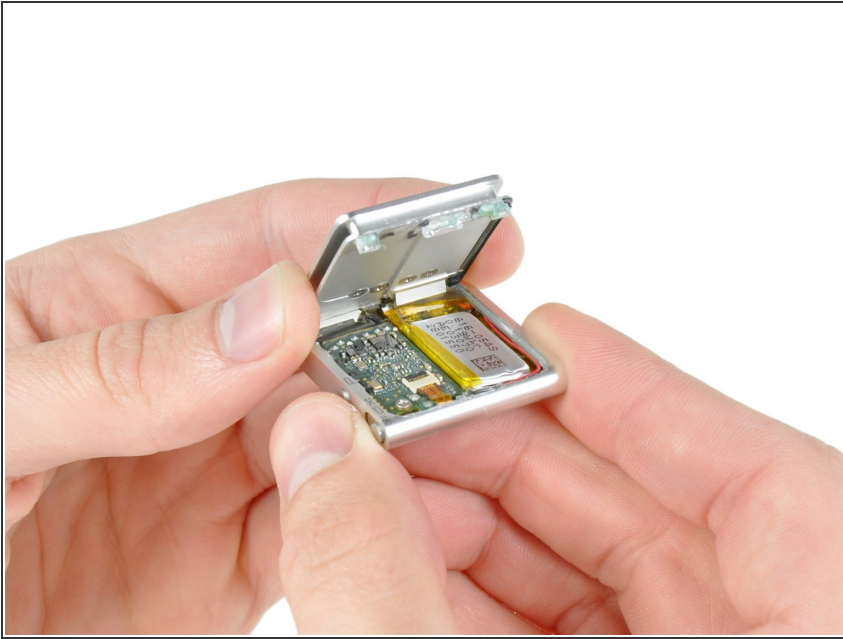
- Before proceeding, be sure your Shuffle is switched off.

Step 2



- Use a combination of iPod opening tools and metal spudgers to pry the rear panel away from the Shuffle by the seam nearest the ON/OFF switch.

Step 3



- Remove the rear panel from the Shuffle.

To reassemble your device, follow these instructions in reverse order.