



iPod Shuffle 4th Generation Belt Clip Replacement

Replace the spring loaded belt clip on your 4th generation iPod Shuffle.

Written By: Andrew Bookholt



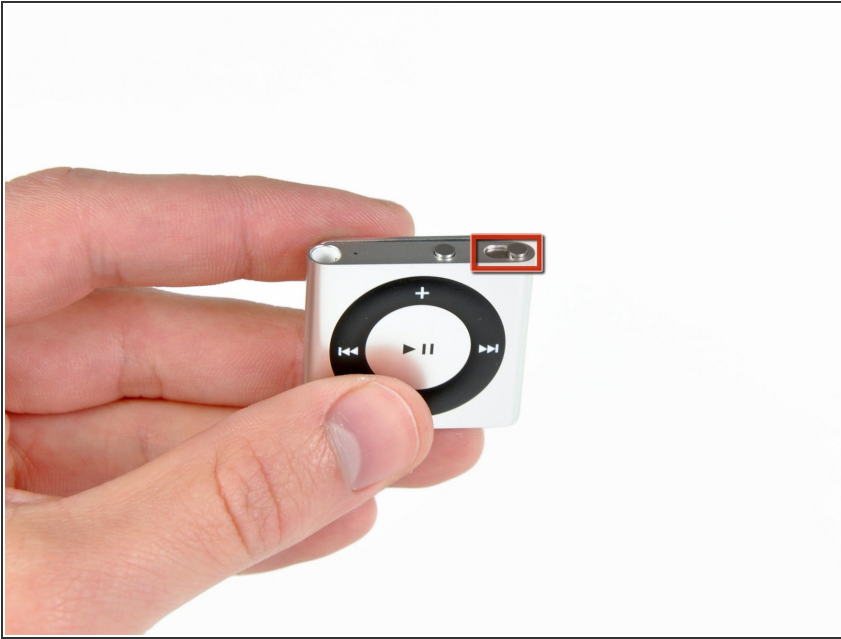
INTRODUCTION

Replace your Shuffle's belt clip.

TOOLS:

- [Metal Spudger Set](#) (1)
 - [Phillips #00 Screwdriver](#) (1)
 - [iFixit Opening Tools](#) (1)
-

Step 1 — Rear Panel



⚠ Accessing the internals of the 4th generation Shuffle is extremely difficult, as the rear panel is both glued to the front case and secured by metal retaining clips. It is highly unlikely that you will be able to remove the rear panel without inflicting cosmetic and/or structural damage.

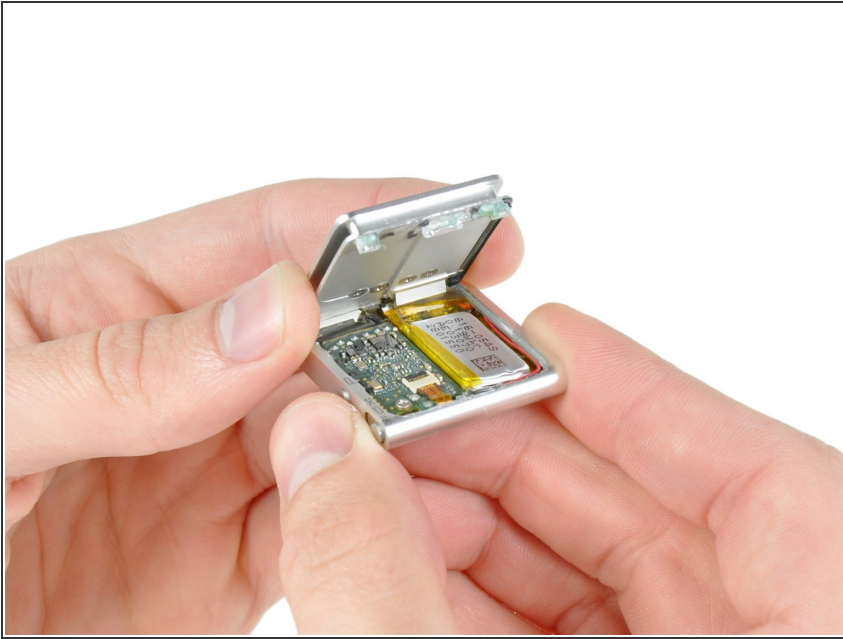
- Before proceeding, be sure your Shuffle is switched off.

Step 2



- Use a combination of iPod opening tools and metal spudgers to pry the rear panel away from the Shuffle by the seam nearest the ON/OFF switch.

Step 3



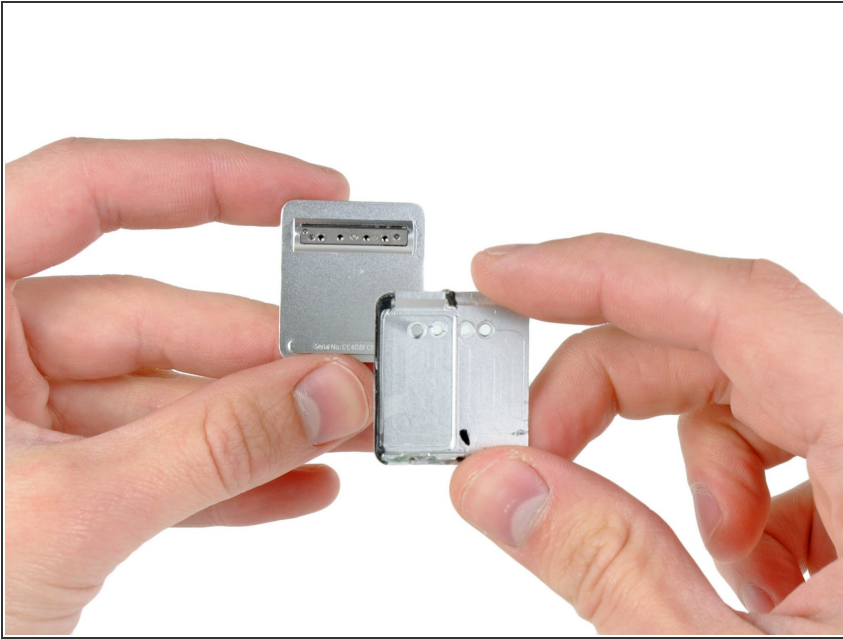
- Remove the rear panel from the Shuffle.

Step 4 — Belt Clip



- Remove the four Phillips screws securing the belt clip to the rear panel.
- ⚠ To avoid bending the last two screws, be sure to squeeze the belt clip against the rear panel as you remove them.

Step 5



- Remove the belt clip from the rear panel.
- ⚠ When reinstalling the screws, be sure to firmly squeeze the belt clip against the rear case until all screws are tightened.

To reassemble your device, follow these instructions in reverse order.

This document was last generated on 2019-08-24 11:49:02 PM.